

SLSI9-90 ✓

UNITED STATES PUBLIC LAND SURVEY CORNER CERTIFICATE  
OF

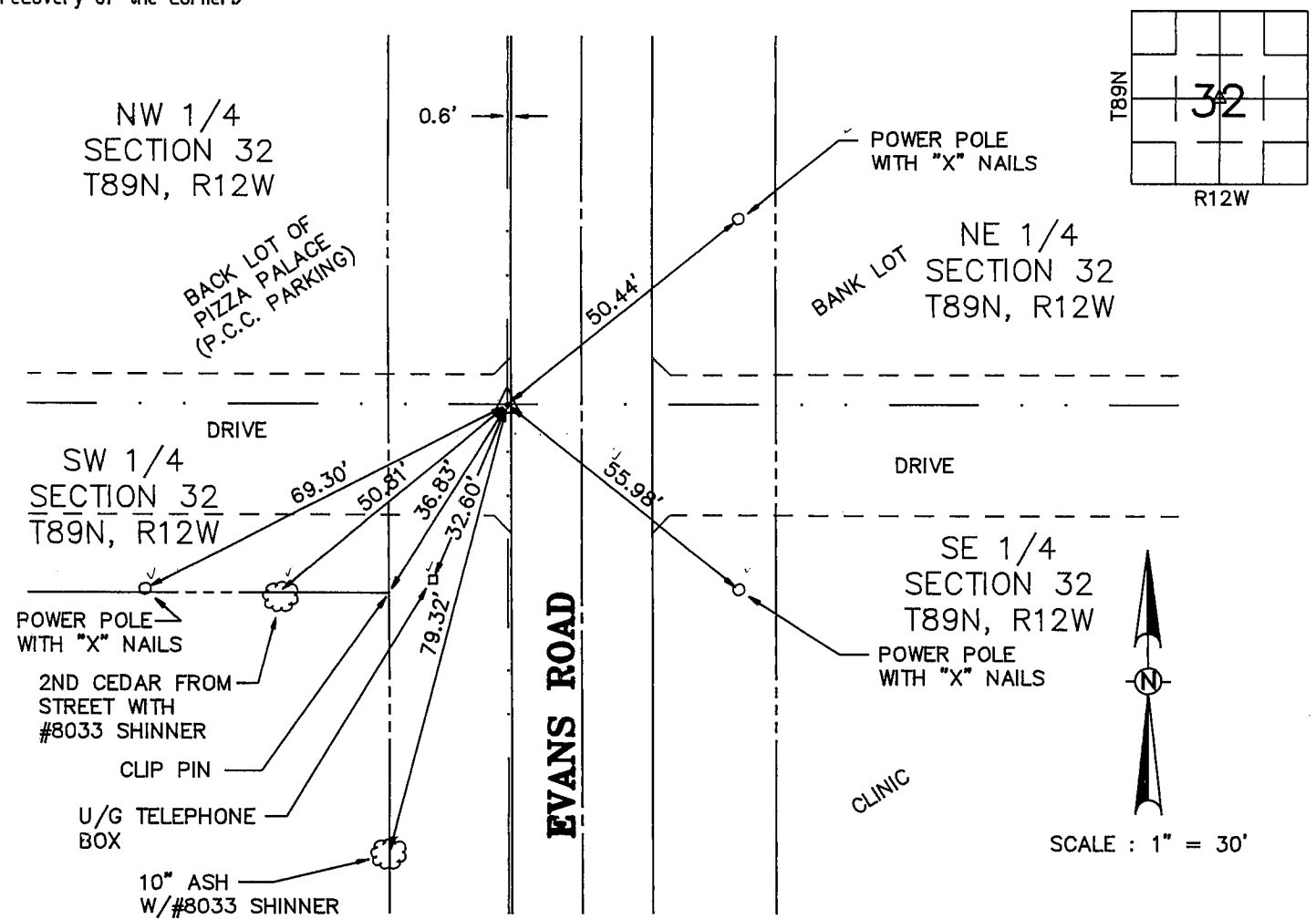
Land Survey Monuments situated in Section 32, Township 89, Range 12, of the Fifth Principal Meridian, BLACK HAWK County, Iowa.  
Previously recorded in \_\_\_\_\_ in County Recorder's Office.  
(book, page, document number, etc.)

(Show reason for preparing this certificate, the evidence and detailed procedures used in establishing the corner positions and monumentation found or placed.)

Monument Description and Remarks: FOUND "P-K" NAIL

PLAN - VIEW

(Show a minimum of three reference ties to durable physical objects, relevant monuments and physical conditions that will enable recovery of the corner.)



I hereby certify that the survey work was completed and this certificate was prepared by me or under my direct personal supervision and that I am a duly registered land surveyor under the laws of the state of Iowa.

Signature: Kirk D. Eschliman  
Name typed or printed: Kirk D. Eschliman

Date: 07/15/93 Reg. No. Ia. R.L.S. 9961  
My Registration Renewal Date: December 31, 1993

SEAL



WAYNE CLAASSEN ENGINEERING AND SURVEYING, INC.  
WATERLOO, IOWA  
FIELD BOOK 395-8 PROJECT NO. 5932.043

Corners	Section	Tw	Range
CS	32	T89N	R12W

IN BOOK 1002 Page F

MISC. BR. 307 p. 216