

ENV BRAIN ENGINEERING INC
1540 MIDLAND CT NE
CEDAR RAPIDS, IA 52402

I
P
Z

Document Number: 2007027504
Date: Jun 25, 2007 4:30:00 pm
Aud Fee: 0.00 Rec Fee: 5.00
Trans Tax: 0.00 Rec Management Fee: 1.00
E-Corn Fee: 1.00 Non-Standard Page Fee: 0.00
Filed for record in Black Hawk County, Iowa
Judith A. McCarthy, County Recorder

PREPARED BY
STEPHEN MICHAEL BRAIN, BRAIN ENGINEERING, INC., 1540 MIDLAND COURT NE, CEDAR RAPIDS, IOWA PH. (319) 294-9424

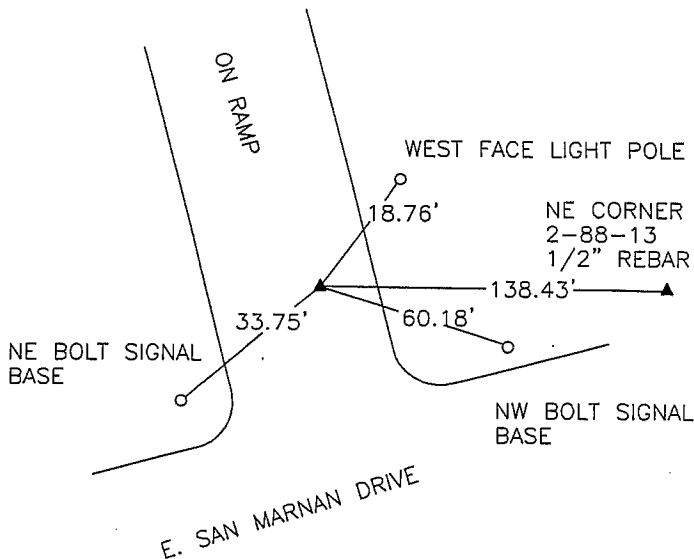
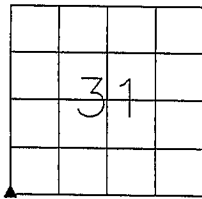
UNITED STATES PUBLIC LAND SURVEY CORNER CERTIFICATE

LAND SURVEY MONUMENTS SITUATED IN SECTION 31, TOWNSHIP 89 NORTH
RANGE 12 WEST OF THE 5TH P.M., BLACKHAWK COUNTY, IOWA.

NO SCALE

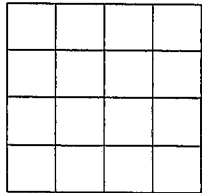


SW CORNER

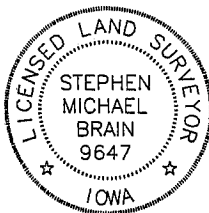


PREVIOUSLY RECORDED IN BOOK _____ PAGE _____
MONUMENT DESCRIPTION AND HOW ESTABLISHED _____
FOUND IDOT ALUMINUM MONUMENT IN CONCRETE

NO SCALE



PREVIOUSLY RECORDED IN BOOK _____ PAGE _____
MONUMENT DESCRIPTION AND HOW ESTABLISHED _____



I hereby certify that this land surveying document
and the related survey work was performed by me
or under my direct personal supervision and that
I am a duly licensed Land Surveyor under the laws
of the State of Iowa.
Signed Stephen Michael Brain Date 6/22/07
Stephen Michael Brain, L.S.
My License Renewal Date is December 31, 2009
License Number 9647
Pages or sheets covered by this seal: 1/1

- ☒ A. THERE IS NO CERTIFICATE FOR THE CORNER ON FILE WITH THE RECORDER OF THE COUNTY IN WHICH THE CORNER IS LOCATED
☐ B. THE SURVEYOR IN RESPONSIBLE CHARGE OF THE LAND SURVEYING ACCEPTS A CORNER POSITION WHICH DIFFERS FROM THAT SHOWN IN THE PUBLIC RECORDS OF THE COUNTY IN WHICH THE CORNER IS LOCATED.
☐ C. THE CORNER MONUMENT IS REPLACED OR MODIFIED IN ANY WAY.
☐ D. THE REFERENCE TIES REFERRED TO IN AN EXISTING PUBLIC RECORD ARE NOT CORRECT.

CORNERS TO BE INDEXED
CORNER SECTION TOWNSHIP RANGE
SW CORNER 31 T89N R12W

BRAIN ENGINEERING, INC.

1540 MIDLAND COURT NE
CEDAR RAPIDS, IOWA 52402
(319) 294-9424

366607.50
✓ Rch