

Reserved for County Recorder's use.

Doc ID: 010220450001 Type: GEN
Recorded: 07/23/2021 at 02:13:23 PM
Fee Amt: \$7.00 Page 1 of 1
Black Hawk County Iowa
SANDIE L. SMITH RECORDER
File **2022-00001834**

✂ Kyle J. Helland, 6109 Chancellor Drive, Cedar Falls, Iowa 50613-6916, (319)-266-0161

UNITED STATES PUBLIC LAND SURVEY CORNER CERTIFICATE
OF

LAND SURVEY MONUMENTS SITUATED IN SECTION NO. 31, TOWNSHIP NO. 89 NORTH, RANGE
NO. 12 WEST OF THE FIFTH PRINCIPAL MERIDIAN, BLACK HAWK COUNTY, IOWA.
PREVIOUSLY RECORDED IN 300 MISC. 136

(SHOW REASON FOR PREPARING THIS CERTIFICATE, THE EVIDENCE AND DETAILED PROCEDURES USED IN ESTABLISHING THE
CORNER POSITIONS AND MONUMENTATION FOUND OR PLACED.)

MONUMENT DESCRIPTION AND REMARKS:

NO REFERENCE TIES REMAIN. SURVEY COMPLETED IN THE NW 1/4 NW 1/4 OF SEC. 32-T89N-R12W.

→ **NE CORNER:** USPLSCC 300 MISC. 136 DATED 02/24/1992 CALLS FOR [SCM FOUND BY WHK&S IN 1979 D.O.T. R.R.
SURVEY. CES FOUND REBAR USING WHK&S TIES IN 1989 & SET 1/2"Ø REBAR w/ 8033 CAP. FOUND 1/2"Ø REBAR & CAP
NO. 8033 2-21-92. 2 PO. POLE TIES TO NORTH MATCH WHK&S TIES OF 1979.] SEARCHED AREA WITH MAGNETIC
DETECTOR, EXCAVATED, AND FOUND NO. 4 REBAR w/ILLEGIBLE YPC 0.6'± DEEP UNDER SEALCOAT.

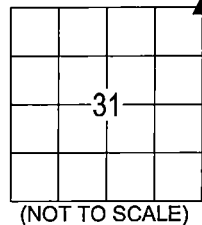
PLAN VIEW

(SHOW A MINIMUM OF THREE REFERENCE TIES TO DURABLE PHYSICAL OBJECTS, RELEVANT MONUMENTS AND PHYSICAL
CONDITIONS THAT WILL ENABLE RECOVERY OF THE CORNER.)

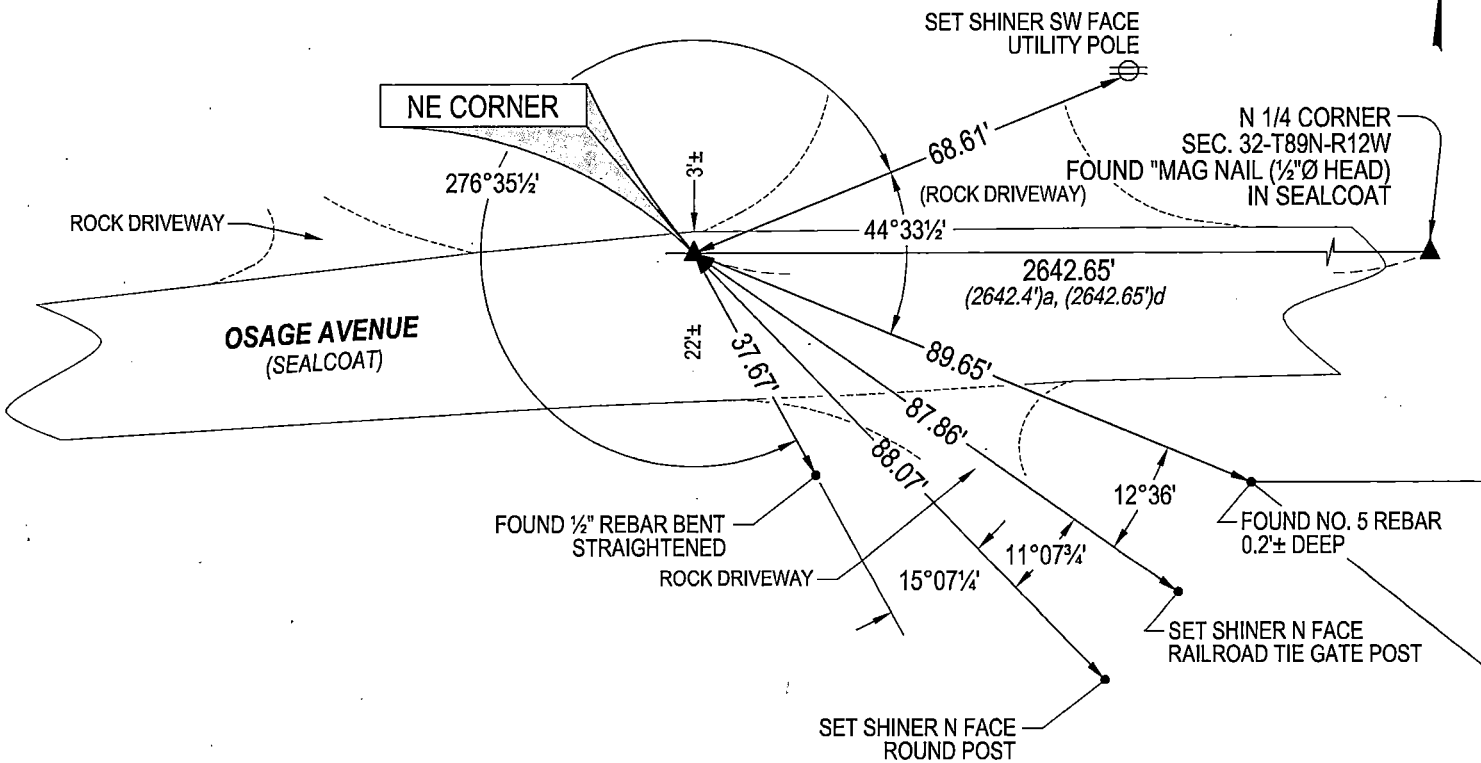
LEGEND

(0.0')a PER WPA CHAINING NOTES

(0.0')d PER PLAT OF SURVEY 574 LD 84
DATED 03/03/2000 ALSO RECORDED IN
340 MISC. 994



(NOT TO SCALE)

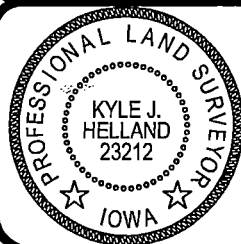


(BEARINGS ARE ASSUMED)



HELLAND ENGINEERING & SURVEYING, LTD.
6109 Chancellor Drive
Cedar Falls, Iowa 50613-6916
(319)-266-0161

BRASS TAG = 4d. NAIL & 13/16"Ø BRASS TAG DRAWN BY: KDA
SHINER = 1"Ø STEEL SHINER w/MASONRY NAIL
OPC = PLASTIC CAP (O=ORANGE, R=RED, Y=YELLOW)
(00') RECORDED AS FILE NAME: 21-167-27.DWG



I hereby certify that this land surveying document was prepared
and the related survey work was performed by me or under my
direct personal supervision and that I am a duly licensed
Professional Land Surveyor under the laws of the State of Iowa.

Kyle J. Helland 07/09/2021
Kyle J. Helland
License Number 23212
My license renewal date is December 31, 2021.
All pages or sheets are covered by this seal except:

LIST CORNERS TO BE INDEXED

CORNER	SECTION	TOWNSHIP	RANGE
NE CORNER	31	89N	12W
SE CORNER	30	89N	12W
SW CORNER	29	89N	12W
NW CORNER	32	89N	12W