



Document Number: 2009003047
Date: Aug 19, 2008 4:30:00 pm
Aud Fee: 0.00 Rec Fee: 5.00
Trans Tax: 0.00 Rec Management Fee: 1.00
E-Com Fee: 1.00 Non-Standard Page Fee: 0.00
Filed for record in Black Hawk County, Iowa
Judith A. McCarthy, County Recorder

WAYNE CLAASSEN ENGINEERING AND SURVEYING, INC.
P.O. BOX 898 WATERLOO, IOWA 50704-0898

PHONE: (VOICE) 319-235-6294
(FAX) 319-235-0028

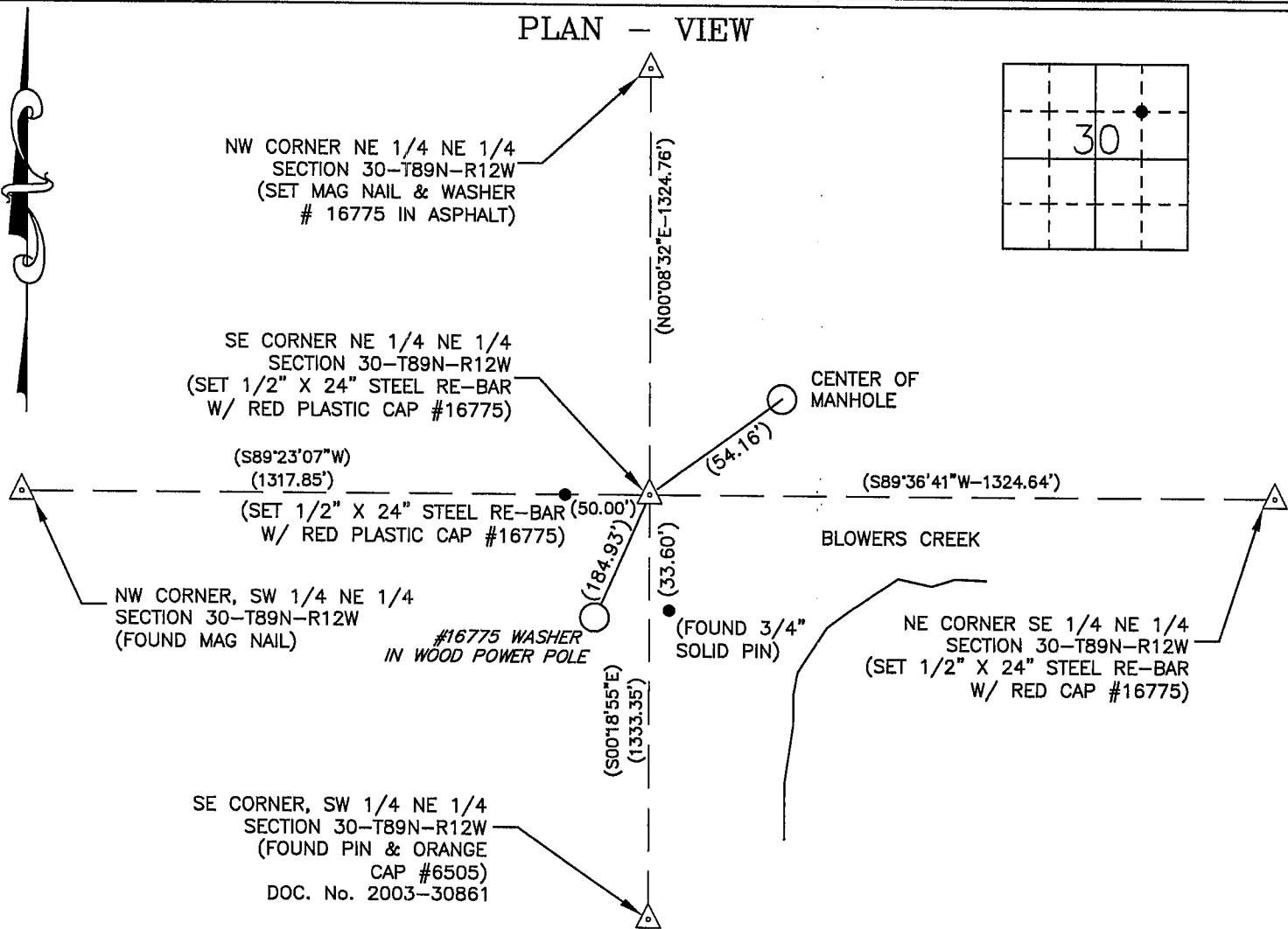
UNITED STATES PUBLIC LAND SURVEY CORNER CERTIFICATE

Land Survey Monuments situated in Section 30, Township 89 North, Range 12 West, of the Fifth Principal Meridian, Black Hawk County, Iowa.
Previously recorded in Document No. 2004-05548 in County Recorder's Office.
(book, page, document number, etc.)

Monument Description and Remarks

Set 1/2" rebar & red cap #16775 near Blowers Creek on the centerline of Canadian National Railroad right-of-way (100' right-of-way) which is former Waterloo Railroad and based upon Claassen Eng. survey for Eastgate Estates dated Sept. 23, 1996 and Land Deed 540-913. This certificate was filed because this corner position differs from the position shown in the above certificate.

PLAN - VIEW



BK 599, PG. 65

I hereby certify that this land surveying document was prepared and the related survey work was performed by me or under my direct personal supervision and that I am a duly Licensed Land Surveyor under the laws of the State of Iowa.

Signature: David L. Scheil

David L. Scheil, L.S.

Date: Aug 18, 2008 Lic. No. 16775

Pages or Sheets Covered by this Seal: THIS SHEET ONLY.

My license renewal date is December 31, 2008

SEAL

List Corners to be Indexed

Corners	Section	Twp	Range
NW CORNER SE 1/4 NE 1/4	30	89 N	12 W

