

WAYNE CLAASSEN ENGINEERING AND SURVEYING, INC.
P.O. BOX 898 WATERLOO, IOWA 50704-0898PHONE: (VOICE) 319-235-6294
(FAX) 319-235-0028

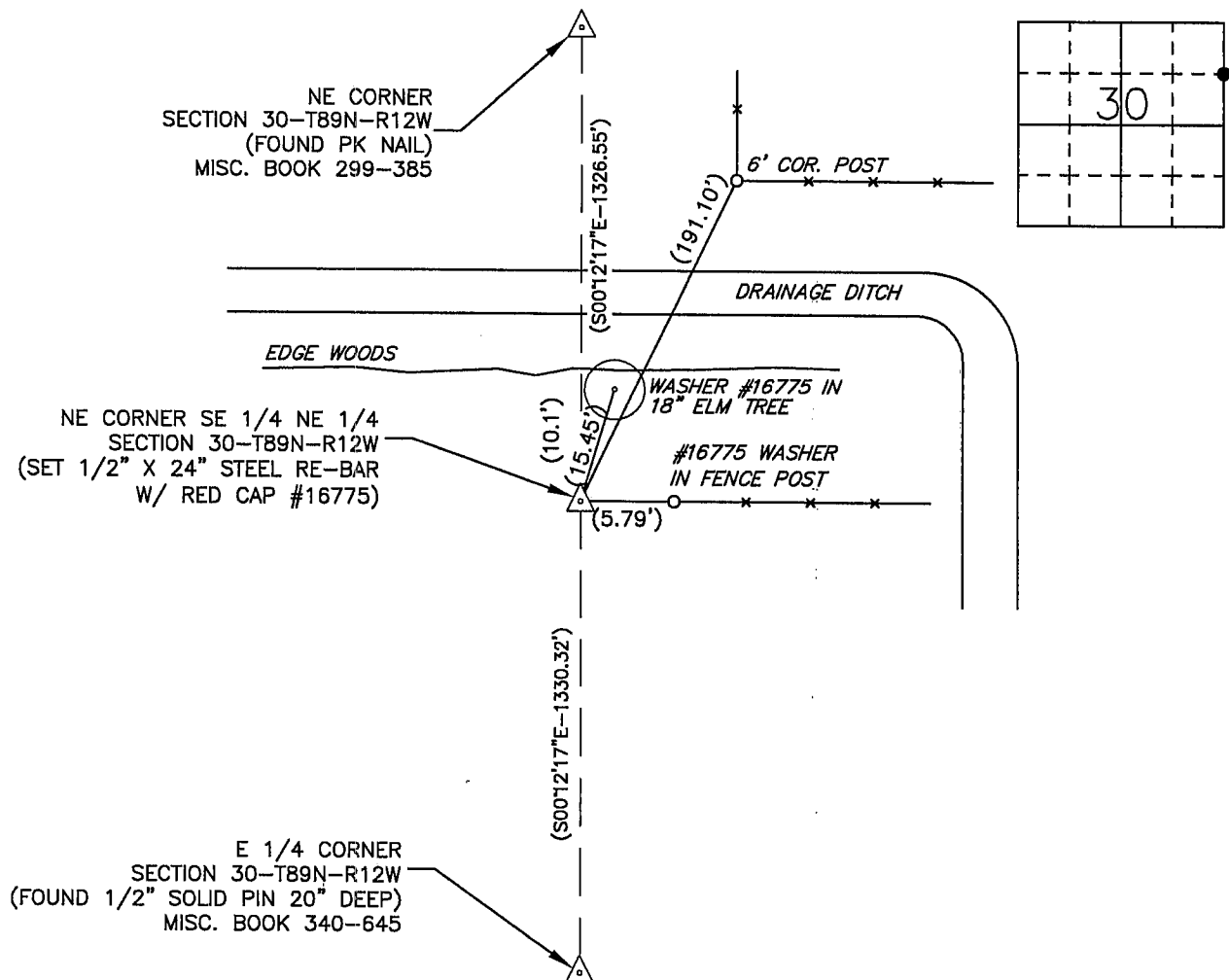
UNITED STATES PUBLIC LAND SURVEY CORNER CERTIFICATE

Land Survey Monuments situated in Section 30, Township 89 North, Range 12 West, of the Fifth Principal Meridian, Black Hawk County, Iowa.
Previously recorded in _____ in County Recorder's Office.
(book, page, document number, etc.)

Monument Description and Remarks

No certificate on file. Set 1/2" rebar & red cap #16775 in wooded area on a line between the NE corner and the E 1/4 corner of section 30 based upon Claassen Eng. survey for Eastgate Estates dated Sept. 23, 1996 and Land Deed 540-913.

PLAN - VIEW



BK 599, PG. 65

I hereby certify that this land surveying document was prepared and the related survey work was performed by me or under my direct personal supervision and that I am a duly Licensed Land Surveyor under the laws of the State of Iowa.

Signature: _____

David L. Schell, L.S.

Date: Aug. 18, 2008 Lic. No. 16775Pages or Sheets Covered by this Seal: THIS SHEET ONLY.

My license renewal date is December 31, 2008

SEAL

List Corners to be Indexed

Corners	Section	Twp	Range
NE CORNER	30	89 N	12 W
SE 1/4 NE 1/4			

