



P

Z

Document Number: 2009003950  
 Date: Aug 19, 2008 4:30:00 pm  
 Aud Fee: 0.00 Rec Fee: 5.00  
 Trans Tax: 0.00 Rec Management Fee: 1.00  
 E-Com Fee: 1.00 Non-Standard Page Fee: 0.00  
 Filed for record in Black Hawk County, Iowa  
 Judith A. McCarthy, County Recorder

WAYNE CLAASSEN ENGINEERING AND SURVEYING, INC.  
 P.O. BOX 898 WATERLOO, IOWA 50704-0898

PHONE: (VOICE) 319-235-6294  
 (FAX) 319-235-0028

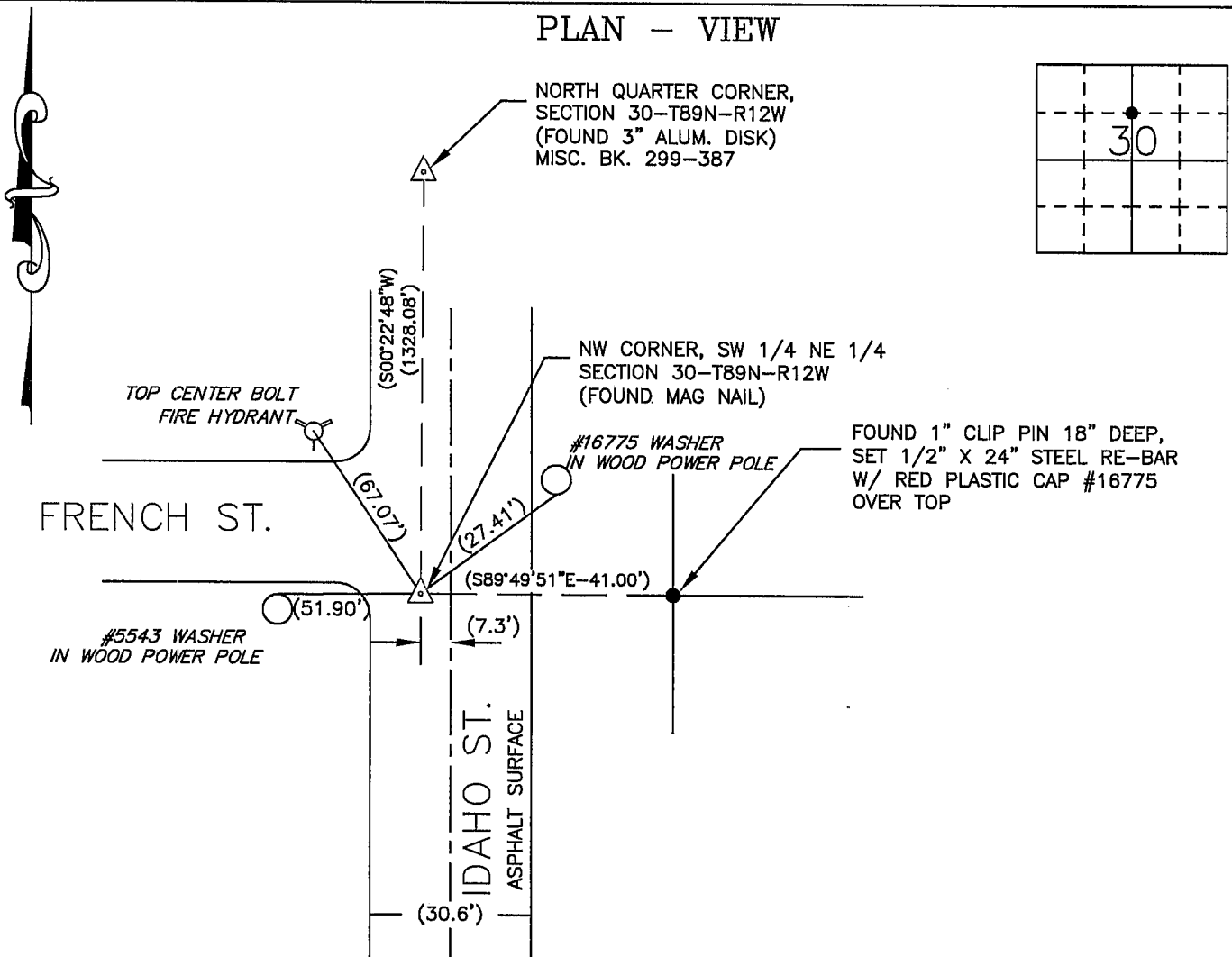
# UNITED STATES PUBLIC LAND SURVEY CORNER CERTIFICATE

Land Survey Monuments situated in Section 30, Township 89 North, Range 12 West, of the Fifth Principal Meridian, Black Hawk County, Iowa.  
 Previously recorded in \_\_\_\_\_ in County Recorder's Office.  
 (book, page, document number, etc.)

## Monument Description and Remarks

No certificate on file. Found mag nail in asphalt on Idaho Street that reasonably fit ties in Schuler's Subdivision of Block 21, Linden Place.

## PLAN - VIEW



BK 599, PG. 80

I hereby certify that this land surveying document was prepared and the related survey work was performed by me or under my direct personal supervision and that I am a duly Licensed Land Surveyor under the laws of the State of Iowa.

Signature: David L. Scheil  
 David L. Scheil, L.S.

Date: Aug 18, 2008 Lic. No. 16775

Pages or Sheets Covered by this Seal: THIS SHEET ONLY.

My license renewal date is December 31, 2008

SEAL

## List Corners to be Indexed

Corners	Section	Twp	Range
NW CORNER	30	89 N	12 W
SW 1/4 NE 1/4			

