

Reserved for County Recorder's use.



Doc ID: 009513310001 Type: GEN  
Recorded: 03/29/2019 at 09:17:18 AM  
Fee Amt: \$7.00 Page 1 of 1  
Black Hawk County Iowa  
SANDIE L. SMITH RECORDER

File 2019-00014405

Kyle J. Helland, 6109 Chancellor Drive, Cedar Falls, Iowa 50613-6919, (319)-266-0161

UNITED STATES PUBLIC LAND SURVEY CORNER CERTIFICATE  
OF

LAND SURVEY MONUMENTS SITUATED IN SECTION NO. 30, TOWNSHIP NO. 89 NORTH, RANGE  
NO. 12 WEST OF THE FIFTH PRINCIPAL MERIDIAN, BLACK HAWK COUNTY, IOWA.

PREVIOUSLY RECORDED IN FILE 2016-3429

(SHOW REASON FOR PREPARING THIS CERTIFICATE, THE EVIDENCE AND DETAILED PROCEDURES USED IN ESTABLISHING THE  
CORNER POSITIONS AND MONUMENTATION FOUND OR PLACED.)

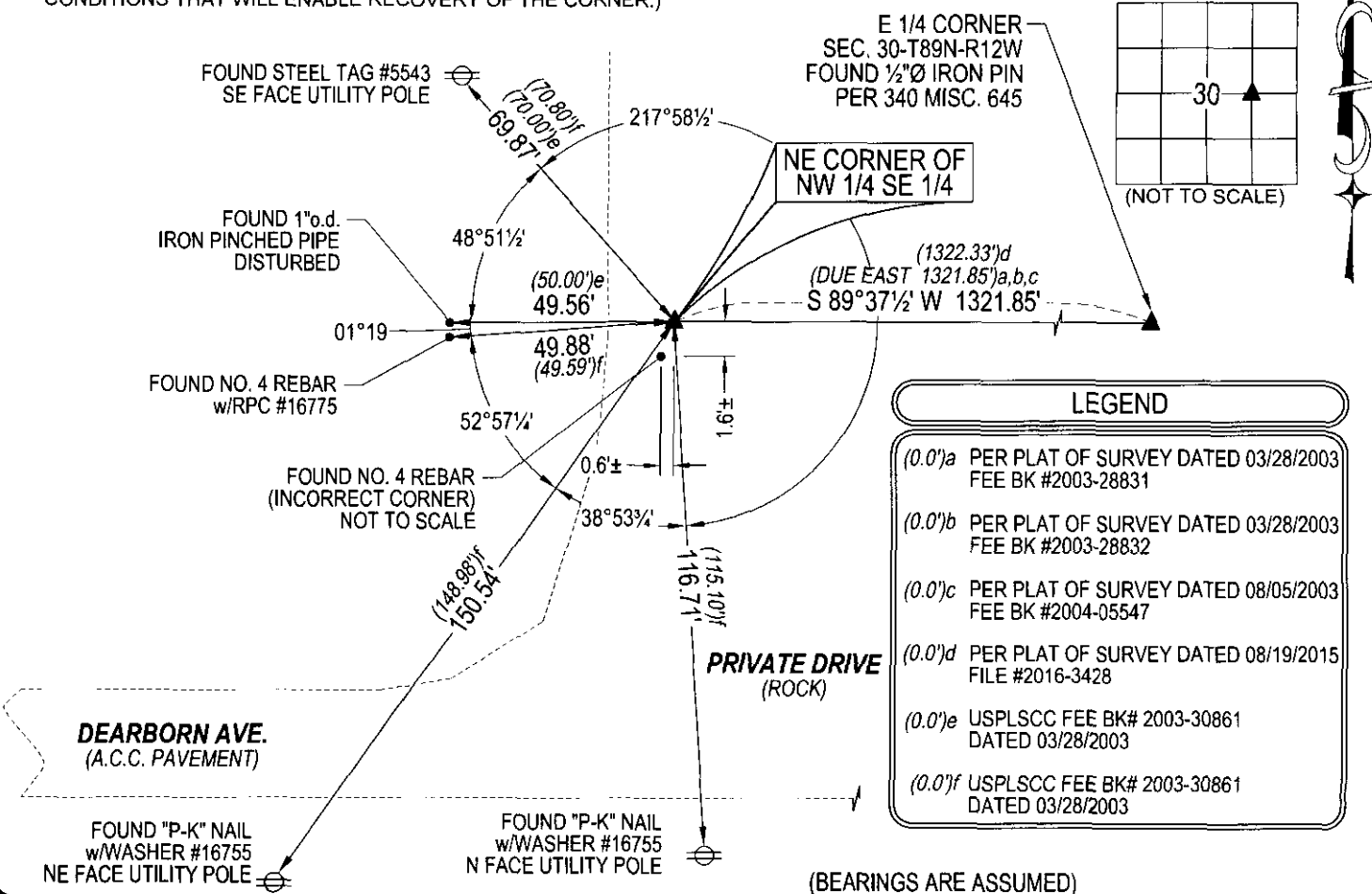
MONUMENT DESCRIPTION AND REMARKS:

MONUMENTATION HAS CHANGED. SURVEY COMPLETED IN THE NE 1/4 OF THE SE 1/4 OF SEC. 30-T89N-R12W.

→ NE CORNER OF THE NE 1/4 OF THE SE 1/4: USPLSCC FEE BOOK #2003-30861 DATED 03/28/2003 CALLS FOR (FOUND NO. 4 REBAR w/YELLOW CAP (#ILLEGIBLE), BUT IT'S POSITION IS INCONSISTENT w/SEVERAL MONUMENTS IN AREA (i.e.PARCEL "C" & "E", PINCHED PIPE TO THE WEST AND NO. 4 REBAR w/YELLOW CAP #7043 ON SOUTH LINE OF NORH 803.5' OF THE NE 1/4 SE 1/4). SET NO. 4 REBAR w/OPC PLASTIC CAP #6505, 50.0' EAST OF THE NE CORNER OF "SUNSHINE SUBDIVISION" (FOUND PINCHED PIPE) ON STRAIGHT LINE TOWARDS THE E 1/4 CORNER. CORNER AS ESTABLISHED IS 1.6' NORTH & 0.6' EAST OF SAID FOUND NO. 4 REBAR w/YELLOW PLASTIC CAP. J. USPLSCC FILE # 2016-3429 DATED 08/19/2015 CALLS FOR (WENT TO LOCTION OF SECTION CORNER AND FOUND 1/2" REBAR WITHOUT ORANGE CAP #6505 AND REFERENCE TIES FROM CERTIFICATE MISSING). SEARCHED AREA WITH MAGNETIC DETECTOR FOUND NO. 4 REBAR w/OPC #6505 0.7' DEEP. PREVIOUS USPLSCC FILE # 2016-3429 APPEARS TO HAVE FOUND THE INCORRECT CORNER (0.6'± WEST & 1.6'± SOUTH) OF TRUE CORNER BASED ON PREVIOUS RECORDED TIES AND DESCRIPTION OF CORNER OF USPLSCC FEE BOOK #2003-30861.

PLAN VIEW

(SHOW A MINIMUM OF THREE REFERENCE TIES TO DURABLE PHYSICAL OBJECTS, RELEVANT MONUMENTS AND PHYSICAL  
CONDITIONS THAT WILL ENABLE RECOVERY OF THE CORNER.)



HELLAND ENGINEERING & SURVEYING, LTD.  
6109 Chancellor Drive  
Cedar Falls, Iowa 50613-6919  
(319)-266-0161

SHINER = 4d. NAIL & 1 5/16"Ø METAL SHINER DRAWN BY: CDR  
BRASS TAG = 4d. NAIL & 13/16"Ø BRASS TAG  
OPC = PLASTIC CAP (O=ORANGE, R=RED, Y=YELLOW)  
(00') RECORDED AS FILE NAME: 19-113-41.DWG



I hereby certify that this land surveying document was prepared  
and the related survey work was performed by me or under my  
direct personal supervision and that I am a duly licensed  
Professional Land Surveyor under the laws of the State of Iowa.  
Kyle J. Helland  
License Number 23212  
My license renewal date is December 31, 2019.  
All pages or sheets are covered by this seal except:

LIST CORNERS TO BE INDEXED			
CORNER	SECTION	TOWNSHIP	RANGE
NE COR. NW 1/4 SE 1/4	30	89N	12W
SE COR. SW 1/4 NE 1/4	30	89N	12W
SW COR. SE 1/4 NE 1/4	30	89N	12W
NW COR. NE 1/4 SE 1/4	30	89N	12W

File Number: 2019-00014405 Seq: 1