



Doc ID: 006841330001 Type: GEN
Recorded: 08/20/2015 at 09:03:54 AM
Fee Amt: \$7.00 Page 1 of 1
Black Hawk County Iowa
SANDIE L. SMITH RECORDER

File 2016-00003429

ENV

WAYNE CLAASSEN ENGINEERING AND SURVEYING, INC.
P.O. BOX 898 WATERLOO, IOWA 50704-0898

PHONE: (VOICE) 319-235-6294
(FAX) 319-235-0028

UNITED STATES PUBLIC LAND SURVEY CORNER CERTIFICATE

Land Survey Monuments situated in Section 30, Township 89 North, Range 12 West, of the Fifth Principal Meridian, Black Hawk County, Iowa.

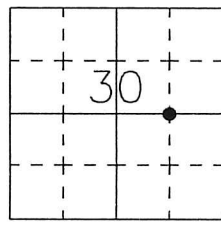
Previously recorded in Document No. 2003-30861 in County Recorder's Office.
(book, page, document number, etc.)

Monument Description and Remarks

Went to location of Section corner and found 1/2" rebar without orange cap #6505 and reference ties from above certificate missing.

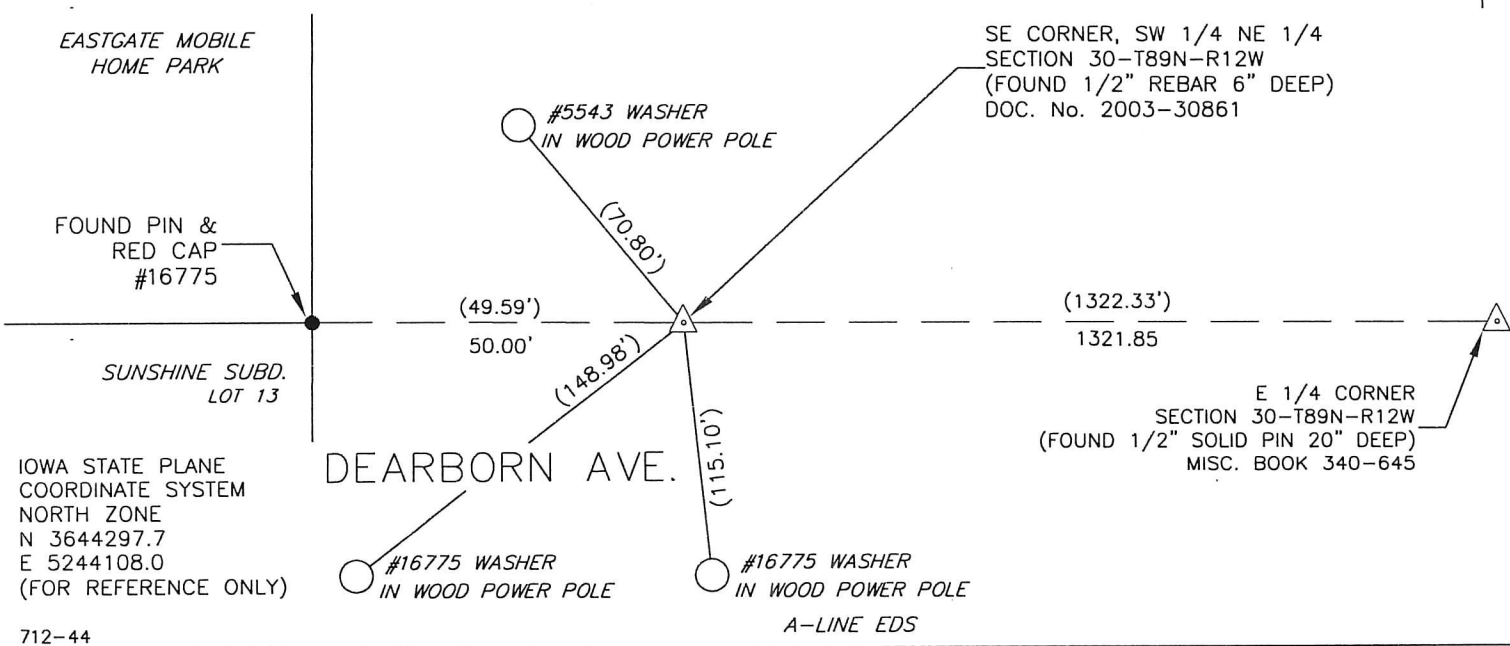
000.00 DENOTES RECORD DIMENSION
FROM DOC. No. 2003-30861
(000.00) DENOTES FIELD DIMENSION

PLAN - VIEW



Reason for filing certificate:

- ☐ There is no certificate on file with the Recorder's Office.
- ☐ Accepts corner position which differs from the one shown in above document.
- ☒ The corner monument was modified.
- ☒ The reference ties in above document were missing.



I hereby certify that this land surveying document was prepared and the related survey work was performed by me or under my direct personal supervision and that I am a duly Licensed Land Surveyor under the laws of the State of Iowa.

Signature: David L. Scheil
David L. Scheil, L.S.

Date: AUG 19, 2015 Lic. No. 16775

Pages or Sheets Covered by this Seal: THIS SHEET ONLY.

My license renewal date is December 31, 2016

SEAL

List Corners to be Indexed

Corners	Section	Twp	Range
SE CORNER, SW 1/4 NE 1/4	30	89 N	12 W