

PROOF FILED FOR RECORD APR 21, 2003, AT 4:00P. M. FEE 1-5.00/.

COMPARED

Patricia A. Sess

BLACK HAWK COUNTY RECORDER

HELLAND ENGINEERING & SURVEYING LTD

Paul H. Helland, 1107 Technology Parkway, Cedar Falls, Iowa 50613-6951, (319)-266-0161

UNITED STATES PUBLIC LAND SURVEY CORNER CERTIFICATE
OFLAND SURVEY MONUMENTS SITUATED IN SECTION NO. 30, TOWNSHIP NO. 89 NORTH, RANGE
NO. 12 WEST OF THE FIFTH PRINCIPAL MERIDIAN, BLACK HAWK COUNTY, IOWA.

PREVIOUSLY RECORDED IN BOOK _____, PAGE _____.

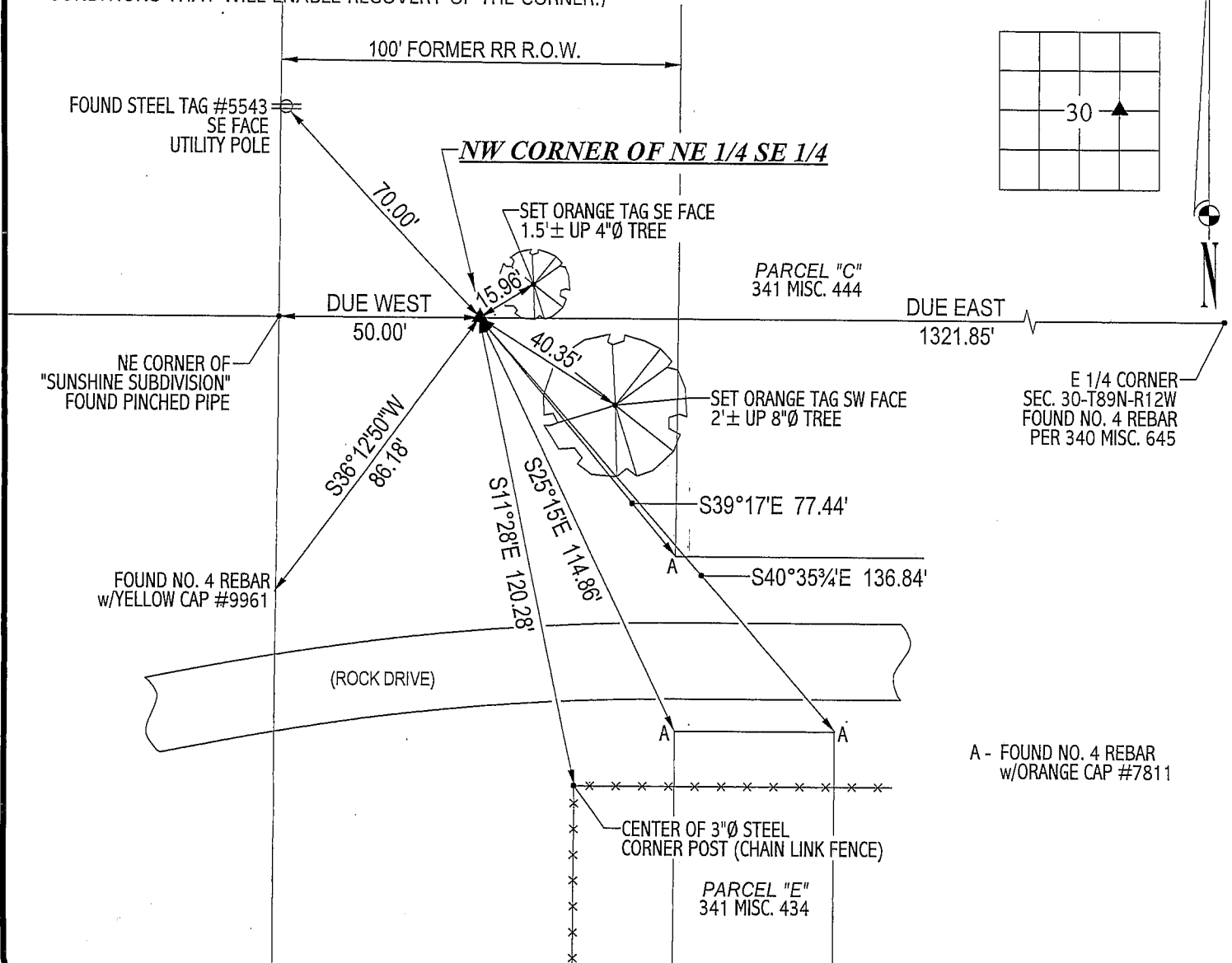
(SHOW REASON FOR PREPARING THIS CERTIFICATE, THE EVIDENCE AND DETAILED PROCEDURES USED IN ESTABLISHING THE
CORNER POSITIONS AND MONUMENTATION FOUND OR PLACED.)

MONUMENT DESCRIPTION AND REMARKS:

NO CORNER CERTIFICATE ON FILE. SURVEY DONE IN NE 1/4 SE 1/4 OF SEC. 30-T89N-R12W.

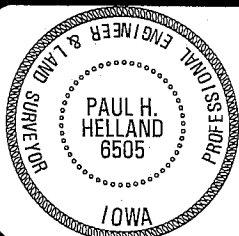
→ NW CORNER NE 1/4 SE 1/4: NO BLACK HAWK COUNTY ENGINEER REFERENCE TIES EXIST. FOUND NO. 4 REBAR w/YELLOW PLASTIC CAP (# ILLEGIBLE), BUT IT'S POSITION IS INCONSISTENT w/SEVERAL MONUMENTS IN AREA (i.e. PARCEL "C" & "E", PINCHED PIPE TO THE WEST AND NO. 4 REBAR w/YELLOW CAP #7034 ON SOUTH LINE OF NORTH 803.5' OF THE NE 1/4 SE 1/4). SET NO. 4 REBAR w/ORANGE PLASTIC CAP #6505, 50.0' EAST OF THE NE CORNER OF "SUNSHINE SUBDIVISION" (FOUND PINCHED PIPE) ON STRAIGHT LINE TOWARDS THE E 1/4 CORNER. CORNER AS ESTABLISHED IS 1.6' NORTH & 0.6' EAST OF SAID FOUND NO. 4 REBAR w/YELLOW PLASTIC CAP.

PLAN VIEW

(SHOW A MINIMUM OF THREE REFERENCE TIES TO DURABLE PHYSICAL OBJECTS, RELEVANT MONUMENTS AND PHYSICAL
CONDITIONS THAT WILL ENABLE RECOVERY OF THE CORNER.)**HELLAND ENGINEERING & SURVEYING, LTD.**
1107 Technology Parkway
Cedar Falls, Iowa 50613-6951
(319)-266-0161

(00.00') - RECORDED AS

FILE NAME: 03-139CC.DRG



I hereby certify that this land surveying document was prepared
and the related survey work was performed by me or under my
direct personal supervision and that I am a duly licensed Land
Surveyor under the laws of the State of Iowa.

Paul H. Helland 3/28/03

Paul H. Helland
License Number 6505
My license renewal date is December 31, 2003.
All pages or sheets are covered by this seal except:

LIST CORNERS TO BE INDEXED

CORNER	SECTION	TOWNSHIP	RANGE
NW CORNER	30	89N	12W
NE 1/4 SE 1/4			

Rec