



P

Z

Document Number: 2009003948
 Date: Aug 19, 2008 4:30:00 pm
 Aud Fee: 0.00 Rec Fee: 5.00
 Trans Tax: 0.00 Rec Management Fee: 1.00
 E-Com Fee: 1.00 Non-Standard Page Fee: 0.00
 Filed for record in Black Hawk County, Iowa
 Judith A. McCarthy, County Recorder

WAYNE CLAASSEN ENGINEERING AND SURVEYING, INC.
 P.O. BOX 898 WATERLOO, IOWA 50704-0898

PHONE: (VOICE) 319-235-6294
 (FAX) 319-235-0028

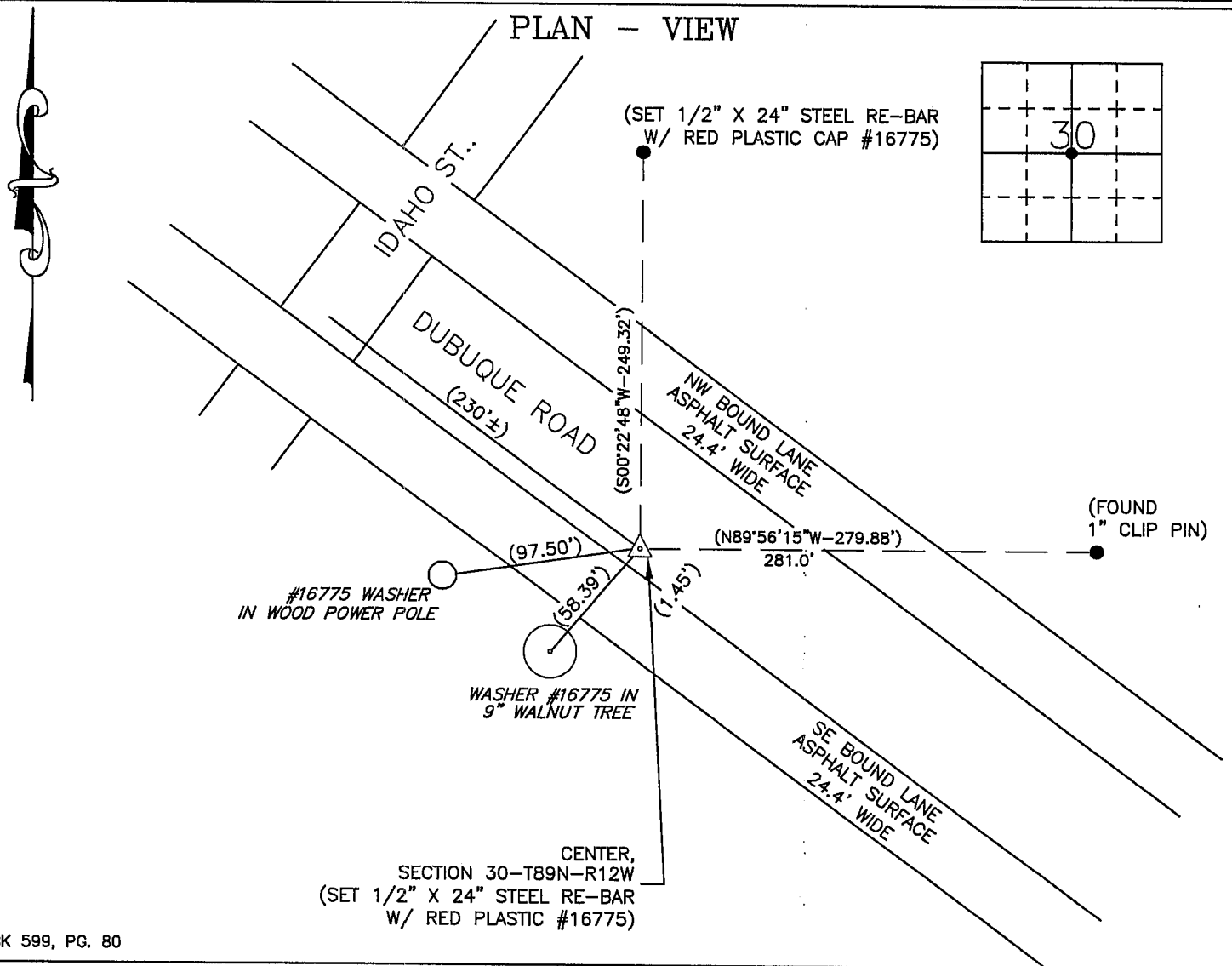
UNITED STATES PUBLIC LAND SURVEY CORNER CERTIFICATE

Land Survey Monuments situated in Section 30, Township 89 North, Range 12 West, of the Fifth Principal Meridian, Black Hawk County, Iowa.
 Previously recorded in _____ in County Recorder's Office.
 (book, page, document number, etc.)

Monument Description and Remarks

No certificate on file. Set 1/2" rebar & red cap #16775 on a line between the N 1/4 corner and the NW corner of the SE 1/4 of the NE 1/4 of section 30 and on the Westerly extension of the North line of Sunshine Subdivision.

PLAN - VIEW



BK 599, PG. 80

I hereby certify that this land surveying document was prepared and the related survey work was performed by me or under my direct personal supervision and that I am a duly Licensed Land Surveyor under the laws of the State of Iowa.

Signature: David L. Scheil
 David L. Scheil, L.S.

Date: AUG. 18, 2008 Lic. No. 16775

Pages or Sheets Covered by this Seal: THIS SHEET ONLY.

My license renewal date is December 31, 2008

SEAL

List Corners to be Indexed

Corners	Section	Twp	Range
CENTER CORNER	30	89 N	12 W

