

UNITED STATES PUBLIC LAND SURVEY CORNER CERTIFICATE

SLSI 9-90

OF

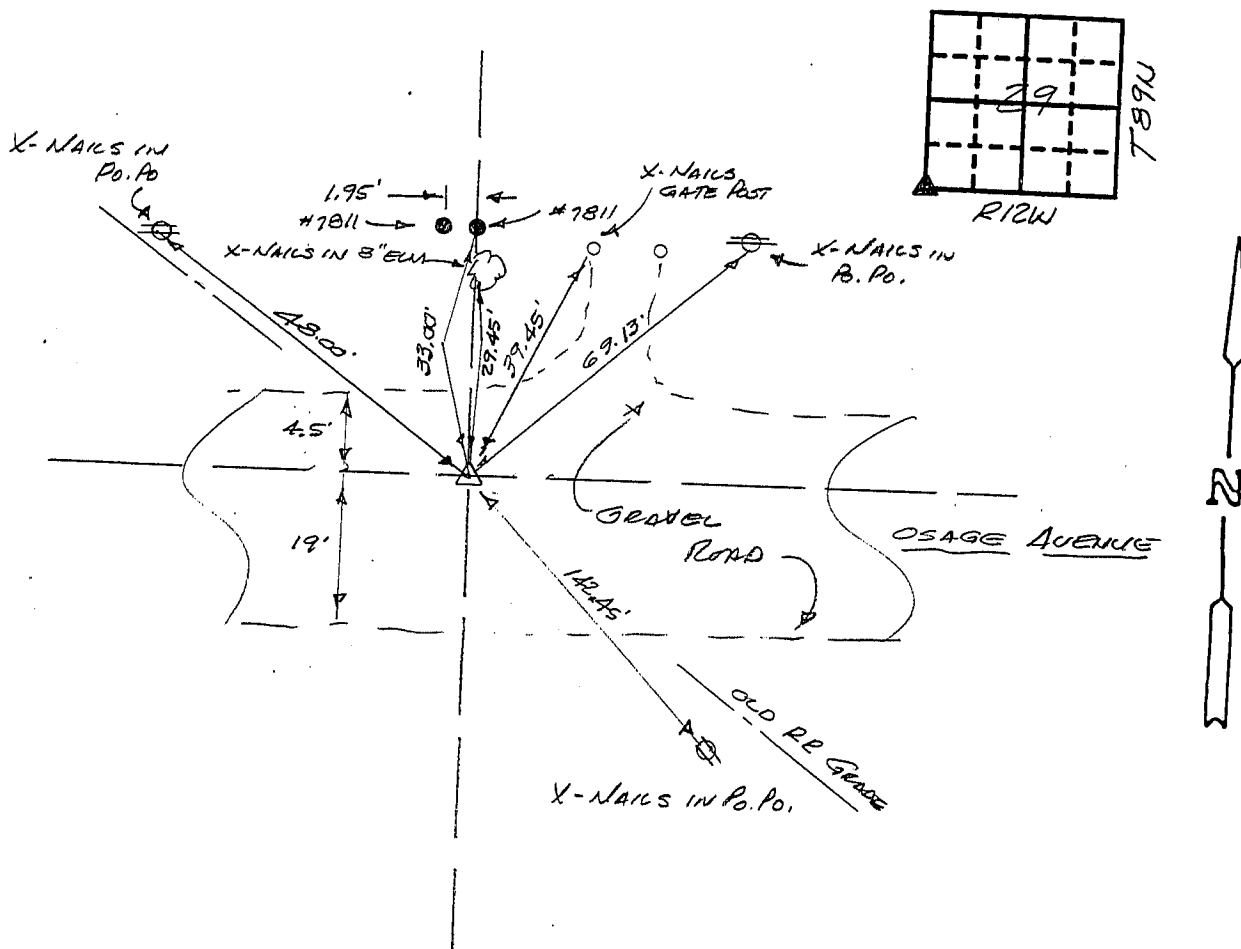
Land Survey Monuments situated in Section 29, Township 89 N, Range 12 W, of the Fifth Principal Meridian, County, Iowa.
Previously recorded in N/A in County Recorder's Office.

(Show reason for preparing this certificate, the evidence and detailed procedures used in establishing the corner positions and monument found or placed.)

Monument Description and Remarks: SCN FOUND BY WHK&S IN 1979 D.O.T. R.R. SURVEY.
CES FOUND REBAR USING WHK&S TIES IN 1989 & SET 1/2" Ø REBAR w/ 8033 CAP.
FOUND 1/2" Ø REBAR & CAP No. 8033 2-21-92. 2 Po. Pole TIES TO NORTH MATCH
WHK&S TIES OF 1979.

PLAN - VIEW

(Show a minimum of three reference ties to durable physical objects, relevant monuments and physical conditions that will enable recovery of the corner.)



I hereby certify that the survey work was completed and this certificate was prepared by me or under my direct personal supervision and that I am a duly registered land surveyor under the laws of the state of Iowa.

Signature: F. William King
Name typed or printed: F. WILLIAM KING
Date: 2-24-1992 Reg. No. 8033

Corners	List Corners to be Indexed	Section	Twp	Range
SCN	29	89 N	12 W	

SEAL

MISC. BK. 300 p. 136