

PRANGE SURVEYING

Prepared by Dennis R. Prange, L.S., Prange Surveying, 3304 Panther Lane, Cedar Falls, Iowa 50613, (319) 277-4935

UNITED STATES PUBLIC LAND SURVEY CORNER CERTIFICATE  
OF

Land Survey Monuments situated in Section No. 29, Township No. 89 North, Range No. 12 West, of the Fifth Principal Meridian, Black Hawk County, Iowa.  
Previously recorded in Book 304 on Page 32 in the office of the County Recorder.  
(book, page, document number, etc.)

(Show reason for preparing this certificate, the evidence and detailed procedures used in establishing the corner positions and monumentation found or placed.)

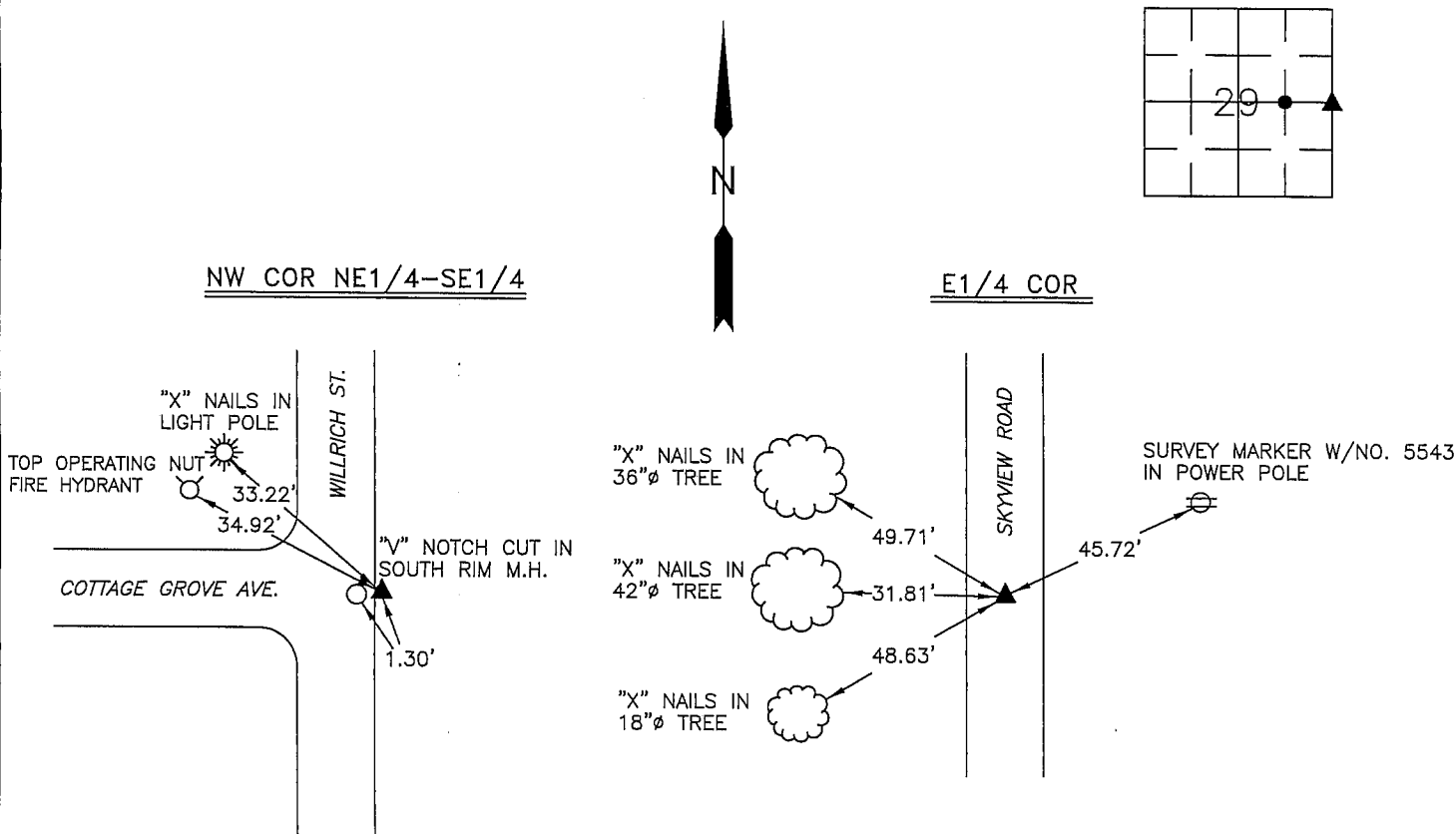
Monument Description and Remarks: Northwest Corner NE1/4-SE1/4 Section 29-89-12 -  
Set 1/2"Ø x 24" rebar w/cap no. 10040 at equal distance between center of section and  
East 1/4 corner. North/South alignment based on property corners found in the vicinity.

East 1/4 corner - Found 3/4"Ø pinched pipe 6" deep.

PLAN - VIEW

(Show a minimum of three reference ties to durable physical objects, relevant monuments and physical conditions that will enable recovery of the corner.)

NOT TO SCALE

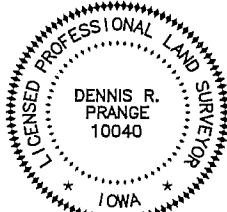


I hereby certify that this land surveying document was prepared by me or under my direct personal supervision and that I am a duly licensed Professional Land Surveyor under the laws of the State of Iowa.

Signed: *Dennis R. Prange*  
Dennis R. Prange, L.S. Iowa License No. 10040

Date: December 8, 2005

SEAL



My License renewal date is December 31, 2006.  
Pages or sheets covered by this seal: this page only

Corners	List Corners to be Indexed		
	Section	Twp	Range
NW COR NE1/4-SE1/4	29	89	12
E1/4 COR	29	89	12

Drawn by: DRP

Checked by: