

Prepared By: Matthew A. Kofta, P.L.S., VJ Engineering, 1501 Technology Parkway, Suite 100, Cedar Falls, Iowa, 50613, (319) 266-5829
★ Return To: Matthew A. Kofta, P.L.S., VJ Engineering, 1501 Technology Parkway, Suite 100, Cedar Falls, Iowa, 50613, (319) 266-5829

United States Public Land Survey Corner Certificate of

Land Survey Monuments situated in Section No. 28, Township No. 89 North,
Range No. 12 West, of the Fifth Principal Meridian, Black Hawk County, Iowa
Previously recorded in 304 Misc 030.

Show reason for preparing this certificate, the evidence and detailed procedures used in establishing the corner positions and monumentation found or placed.

Monument Description and Remarks: Southwest Corner -- Section 28 - T89N - R12W

Previous corner certificate indicates that the corner in monumented with a 1"Ø Iron Pipe.

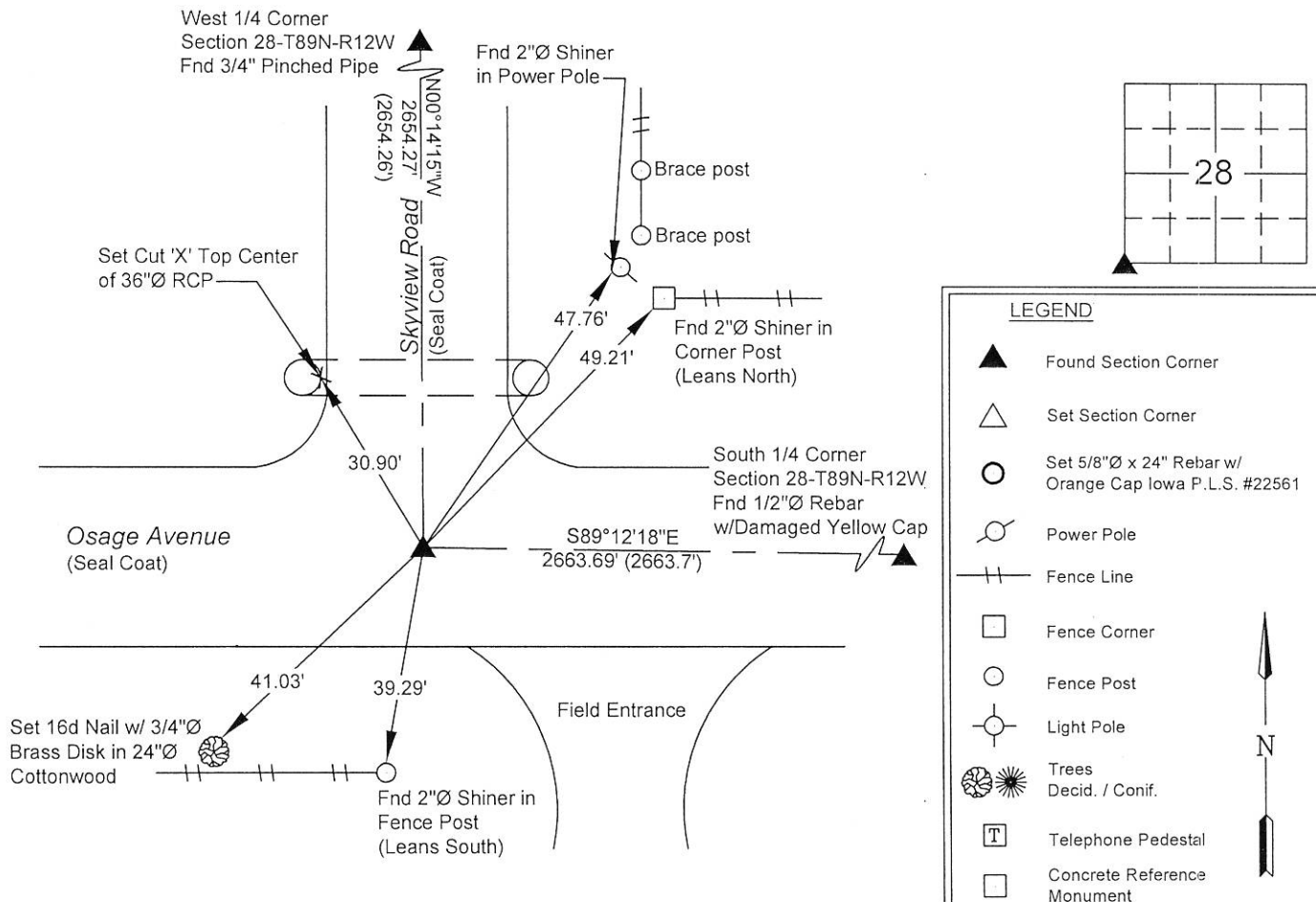
Searched area and found a 60d Spike 3" below Seal Coat road surface, 4.3' North of East-West Road Centerline.

Remaining ties and distances to the West 1/4 corner and the South 1/4 corner checked within .01', accepted and used 60d Spike as the corner.

This corner certificate is being prepared due to a change in monumentation and to update the reference ties.

PLAN - VIEW

(Show a minimum of three reference ties to durable physical objects, relevant monuments and physical conditions that will enable recovery of the corner.)



I hereby certify that this land surveying document was prepared and the related survey work was performed by me or under my direct personal supervision and that I am a duly licensed Land Surveyor under the laws of the State of Iowa.



Matthew A. Kofta
Matthew A. Kofta, P.L.S.
License Number 22561
My license renewal date is December 31, 2020
Pages or sheets covered by this seal: 1

List Corner to be Indexed

Corner	Section	Twp	Range
Southwest	28	89N	12W



VJ Engineering
1501 Technology Parkway
Cedar Falls, Iowa - 319-266-5829

Section Corner
Reference Ties

file no.
198025
drawn by
RAW
date
8/27/19