

UNITED STATES PUBLIC LAND SURVEY CORNER CERTIFICATE

OF

Land Survey Monuments situated in Section 28 & 29, Township 89 North, Range 12 West, of the Fifth Principal Meridian, Black Hawk County, Iowa.  
Previously recorded in Book (none), Page .

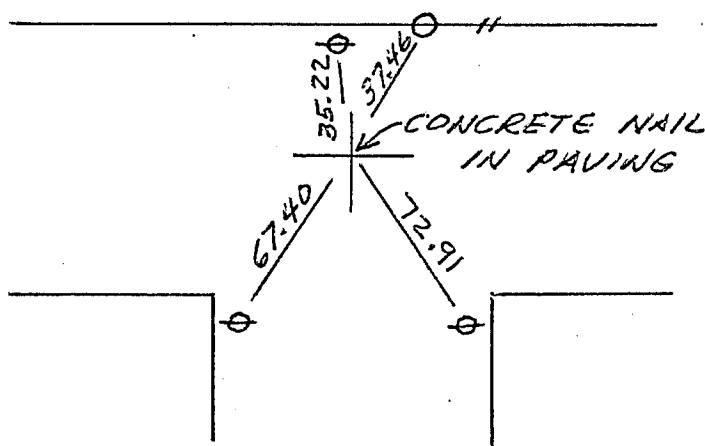
(Show reason for preparing this certificate, the evidence and detailed procedures used in establishing the corner positions and monumentation found or placed.)

Monument Description and Remarks: No existing certificates. Placed new ties.

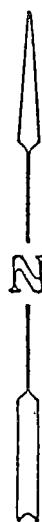
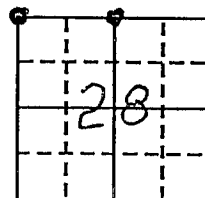
PLAN - VIEW

(Show a minimum of three reference ties to durable physical objects, relevant monuments and physical conditions that will enable recovery of the corner.)

NE COR. SECT. 29



29



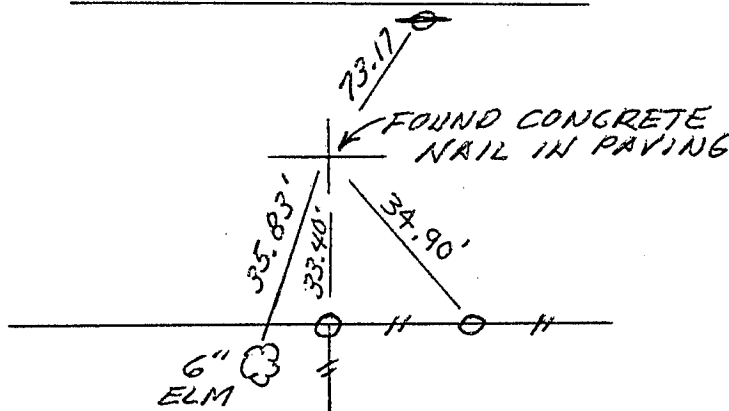
= NW COR 29  
= NE COR 28

SEE LS #10040  
corner cert. of 1/6/92  
in Misc. Bk 299 389  
(SE COR. 20-89-12)

for ref.

(All ties Agree) *H.T.*

N 1/4 COR. SECT. 28



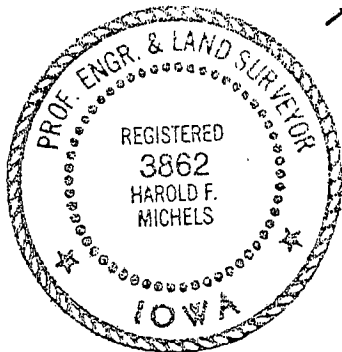
= S 1/4 COR. Sect. 21  
LS #10040 1/6/92  
Misc. Bk. 299 p. 399

I hereby certify that the survey work was completed and this certificate was prepared by me or under my direct personal supervision and that I am a duly registered land surveyor under the laws of the state of Iowa.

*Harold F. Michels*

REGISTERED LAND SURVEYOR NO. 3862  
AUG. 9, 1990

SEAL



List Corners to be Indexed

Corners	Section	Twp	Range
NE	29	89	12
N 1/4	28	89	12

MISC BK 292 P. 400