

PREPARED BY / RETURN TO: KENNETH D. STARK IOWA DEPARTMENT OF TRANSPORTATION 1420 4th ST. SE MASON CITY, IA 50401 641-423-7584
ENV
UNITED STATES PUBLIC LAND SURVEY CORNER CERTIFICATE
OF

Land Survey Monuments situated in Section 28, Township 89N, Range 12W
of the Fifth Principal Meridian, BLACK HAWK County, Iowa.

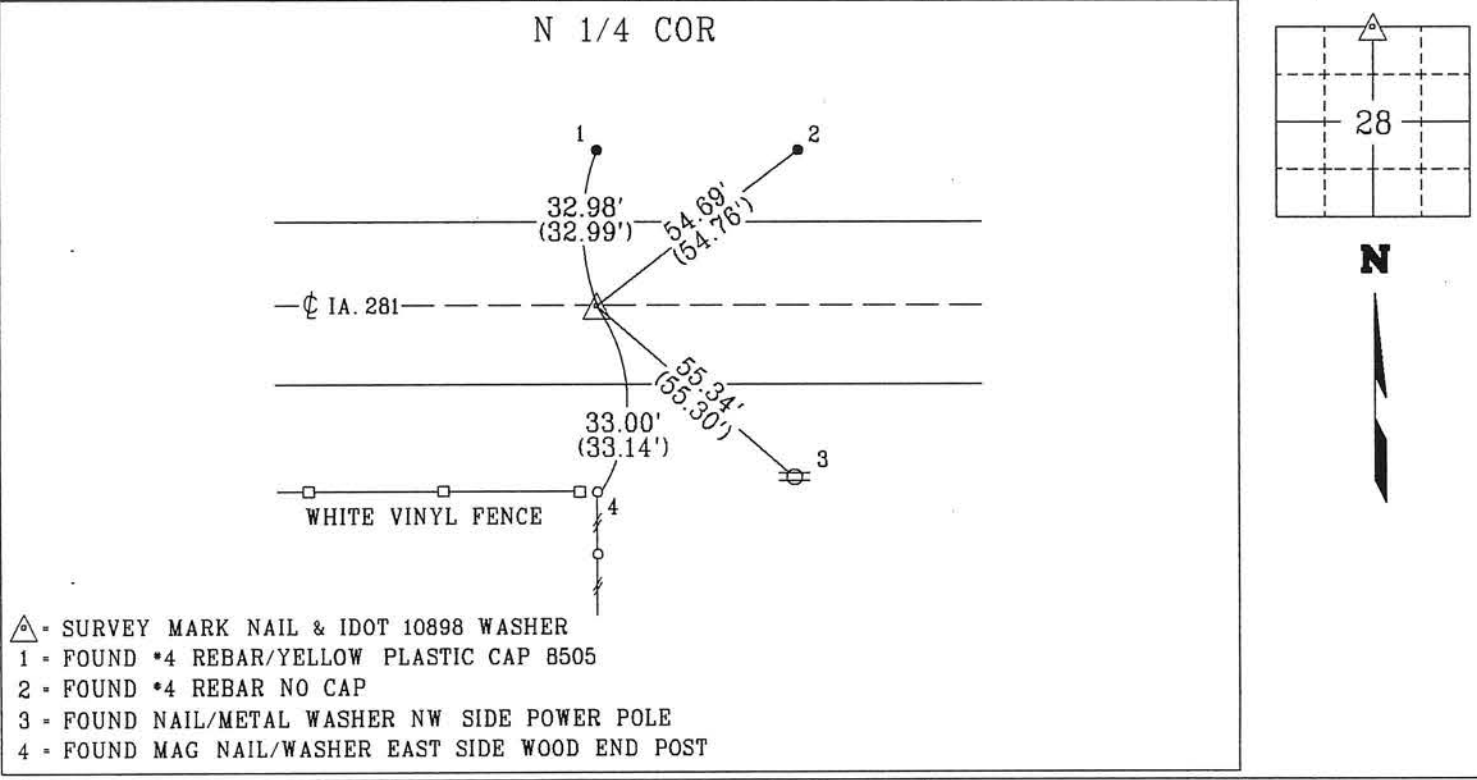
Previously recorded in FILE 2011-00001028 in County Recorder's Office.
(book, page, document number, etc.)

(Show reason for preparing this certificate, the evidence and detailed procedures used in establishing the corner positions and monumentation found or placed.)

Monument Description and Remarks: N 1/4 COR = REPLACED PREVIOUSLY FOUND #5 REBAR WITH SURVEY MARK NAIL & IDOT 10898
SEC. COR WASHER ON C IA. 281 AFTER 2012 HMA OVERLAY PROJECT STP-281-1(45)--2C-07 PER
PREVIOUS CERT: FILE 2001-00001028. REASON FOR CERT: CHANGE TO MONUMENT

PLAN - VIEW

(Show a minimum of three reference ties to durable physical objects, relevant monuments and physical conditions that will enable recovery of the corner.)



PROFESSIONAL LAND SURVEYOR
KENNETH D. STARK
10898
IOWA

I hereby certify that this land surveying document was prepared and the related survey work was performed by me or under my personal supervision and that I am a duly Licensed Land Surveyor under the laws of the state of Iowa.
Kenneth D. Stark 06-15-15
Kenneth D. Stark Date
License number 10898
My License renewal date is December 31, 2015
Pages or sheets covered by this seal. 1

List Corners to be Indexed			
Corner	Section	Township	Range
N 1/4 CORNER	28	89N	12W
TIED:ME/CS DRAWN:ME			

700 ✓

1