

INDEX  
MARGIN  
PROOF  
COMPARE

BLACK HAWK COUNTY IOWA:SS **023940**  
Filed for record MAY 17 2001  
4:00 P. M. and recorded in Book \_\_\_\_\_  
of \_\_\_\_\_ Page \_\_\_\_\_  
Recorder  
FEE 1-5.00/  
PAUL HELLAND

Paul H. Helland, 1107 Technology Parkway, Cedar Falls, Iowa 50613-6951, (319)-266-0161

## UNITED STATES PUBLIC LAND SURVEY CORNER CERTIFICATE OF

LAND SURVEY MONUMENTS SITUATED IN SECTION NO. 27, TOWNSHIP NO. 89 NORTH, RANGE  
NO. 12 WEST OF THE FIFTH PRINCIPAL MERIDIAN, BLACK HAWK COUNTY, IOWA.

PREVIOUSLY RECORDED IN BOOK \_\_\_\_\_, PAGE \_\_\_\_\_.

(SHOW REASON FOR PREPARING THIS CERTIFICATE, THE EVIDENCE AND DETAILED PROCEDURES USED IN ESTABLISHING THE  
CORNER POSITIONS AND MONUMENTATION FOUND OR PLACED.)

### MONUMENT DESCRIPTION AND REMARKS:

SURVEY DONE IN NW 1/4 & SE 1/4 OF SEC. 27-T89N-R12W.

E 1/4 CORNER: Found broken off concrete monument 1.0' deep SW of corner post per county reference ties. Set No. 4 rebar on North side for magnetic detection.

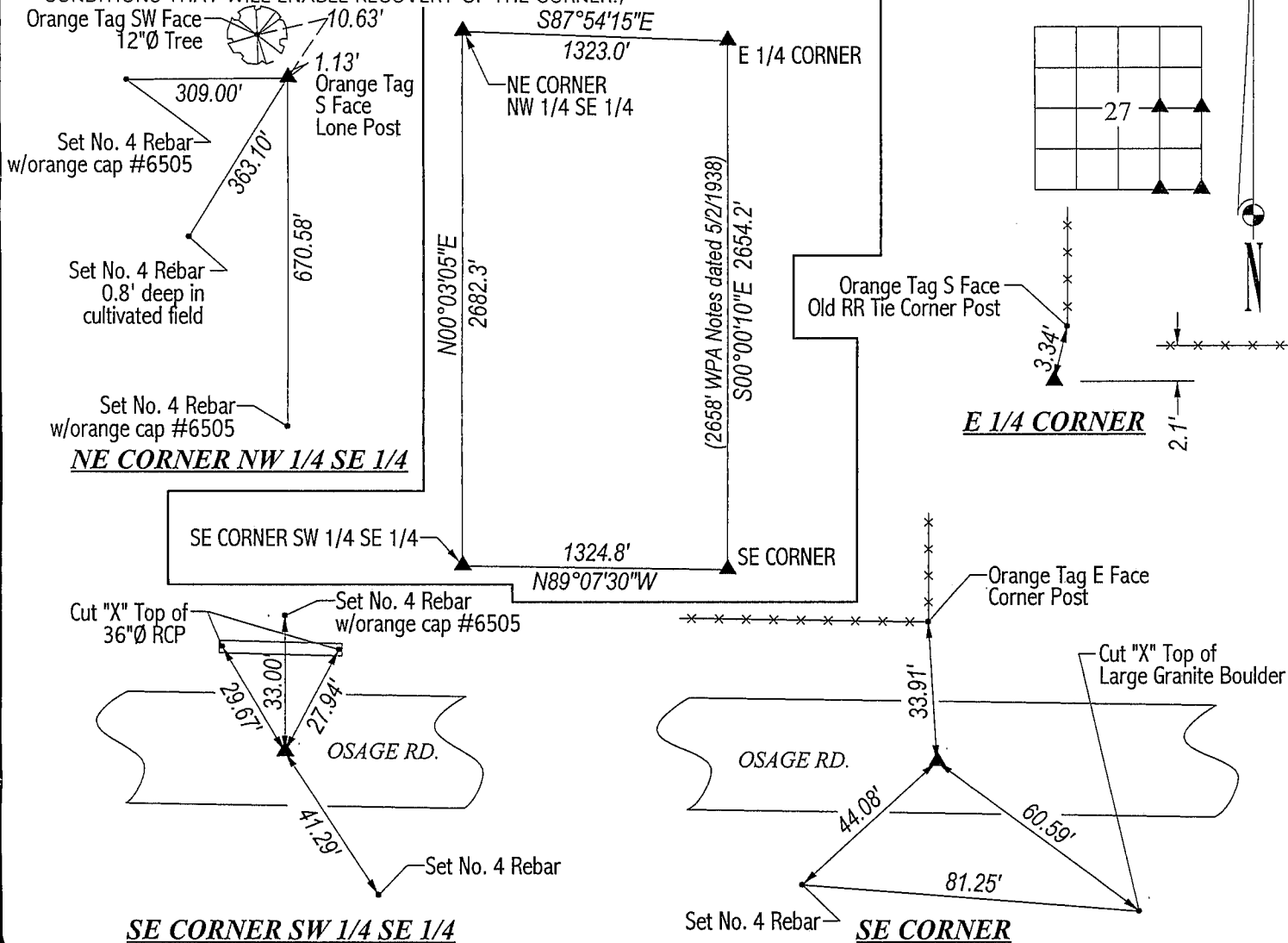
SE CORNER: Found concrete monument w/brass cap 0.4' deep using WPA chaining notes dated 5/2/1938. Set No. 4 rebar on North side for magnetic detection.

SE CORNER of SW 1/4 SE 1/4: No county reference ties. Found bent 60d nail w/in 0.03'± of exact split of South line of SE 1/4. Set No. 4 rebar w/orange cap #6505 @ said exact split.

NE CORNER of NW 1/4 SE 1/4: No county reference ties. Found 10"Ø granite stone South of lone post 1.0' deep. Cut "X" on top of stone & set No. 4 rebar 0.40' East of "X" for magnetic detection. Stone is 31.1' North of a line between the Center & E 1/4 Corner. Fences West, North and remnants of fence East intersect @ found stone.

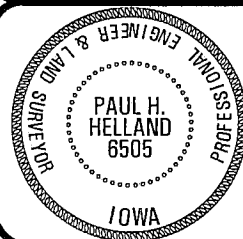
### PLAN VIEW

(SHOW A MINIMUM OF THREE REFERENCE TIES TO DURABLE PHYSICAL OBJECTS, RELEVANT MONUMENTS AND PHYSICAL  
CONDITIONS THAT WILL ENABLE RECOVERY OF THE CORNER.)



**HELLAND ENGINEERING & SURVEYING, LTD.**  
1107 Technology Parkway  
Cedar Falls, Iowa 50613-6951  
(319)-266-0161

FILE NAME: 01-178C1.DRG



I hereby certify that this land surveying document was prepared  
and the related survey work was performed by me or under my  
direct personal supervision and that I am a duly licensed Land  
Surveyor under the laws of the State of Iowa.

*Paul H. Helland*  
Paul H. Helland  
License Number 6505  
My license renewal date is December 31, 2001.  
All pages or sheets are covered by this seal except:

LIST CORNERS TO BE INDEXED			
CORNER	SECTION	TOWNSHIP	RANGE
E 1/4 CORNER	27	89N	12W
SE CORNER	27	89N	12W
SE CORNER	27	89N	12W
SW 1/4 SE 1/4			
NE CORNER	27	89N	12W
NW 1/4 SE 1/4			