

BLACK HAWK COUNTY IOWA:SS 023939
Filed for record MAY 17 2001
4:00 P. M. and recorded in Book
of _____ Page _____
Catharine S. Lass

Recorder
FEE 1-5.00/ .
PAUL HEILAND

UNITED STATES PUBLIC LAND SURVEY CORNER CERTIFICATE

PREVIOUSLY RECORDED IN BOOK _____, PAGE _____.

(SHOW REASON FOR PREPARING THIS CERTIFICATE, THE EVIDENCE AND DETAILED PROCEDURES USED IN ESTABLISHING THE CORNER POSITIONS AND MONUMENTATION FOUND OR PLACED.)

MONUMENT DESCRIPTION AND REMARKS:

SURVEY DONE IN NW 1/4 & SE 1/4 OF SEC. 27-T89N-R12W.

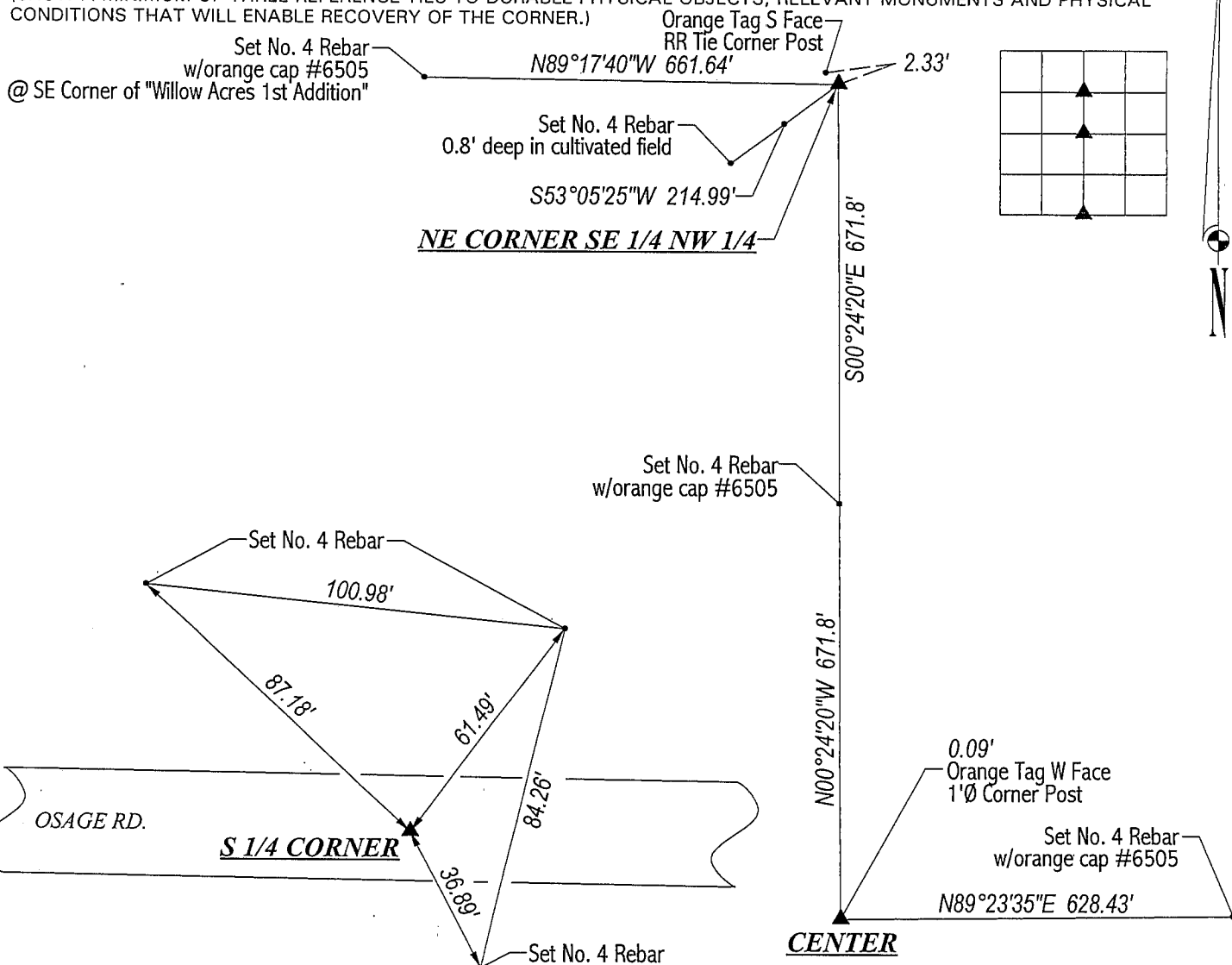
S 1/4 CORNER: Found No. 4 rebar w/red flagging 0.4' deep per Plat of Survey Misc. 248-649. Road bed elevated for bridge to the West over Elk Run Creek. WPA notes dated 5/2/1938 show corner 2,649.6 feet West of the SE Corner. 2,649.6 feet is the field dimension to a concrete monument @ said SE Corner.

CENTER: No county reference ties. Found lone corner post (1"Ø) @ intersection of remnants of fence to the North and fencing to the East. Excavated around corner post. No stone or other evidence found. Set No. 4 rebar w/orange cap #6505 on West side of corner post @ intersection of said fences. Corner is 6.6' South & 13.5' East of Theoretical Section breakdown.

NE CORNER SE 1/4 NW 1/4: No county reference ties. Fencing removed. Set No. 4 rebar w/orange cap #6505 on a straight line between the Center & N 1/4 Corner (Misc. 300-471) and based the corner's Northing on "Willow Acres 1st Addition".

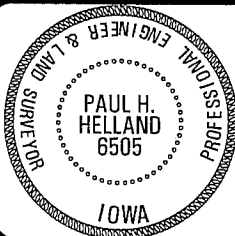
PLAN VIEW

(SHOW A MINIMUM OF THREE REFERENCE TIES TO DURABLE PHYSICAL OBJECTS, RELEVANT MONUMENTS AND PHYSICAL CONDITIONS THAT WILL ENABLE RECOVERY OF THE CORNER.) Orange Tan S Face—



HELLAND ENGINEERING & SURVEYING, LTD.
1107 Technology Parkway
Cedar Falls, Iowa 50613-6951
(319)-266-0161

FILE NAME: 01-178C2.DRG



I hereby certify that this land surveying document was prepared and the related survey work was performed by me or under my direct personal supervision and that I am a duly licensed Land Surveyor under the laws of the State of Iowa.

Paul H. Helland
License Number 6505
My license renewal date is December 31, 2001.
All pages or sheets are covered by this seal except:

LIST CORNERS TO BE INDEXED

CORNER	SECTION	TOWNSHIP	RANGE
S 1/4 CORNER	27	89N	12W
CENTER	27	89N	12W
NE CORNER	27	89N	12W
SE 1/4 NW 1/4			

0342 PAGE 701