

006925

Catherine L. Lee Recorder  
FEE N/C  
BLACK HAWK COUNTY ENGINEER

PREPARED BY: BLACK HAWK COUNTY ENGINEERS OFFICE  
316 E. FIFTH STREET, ROOM 211 WATERLOO, IOWA 50703

PH.# (319) 833-3008  
FAX.# (319) 833-3139

SLSI 9-94  
CERT 12-96

## UNITED STATES PUBLIC LAND SURVEY CORNER CERTIFICATE OF

Land Survey Monuments situated in Section 26 , Township 89 N ,  
Range 12 W , of the Fifth Principal Meridian, BLACK HAWK County, Iowa.  
Previously recorded in Misc. Book n/a , Page n/a , in County Recorder's Office.

(Show reason for preparing this certificate, the evidence and detailed procedures used in establishing the corner positions and monumentation found or placed.)

Monument Description and Remarks: FOUND STD. WPA C.M. IN DITCH BTM.  
ALONG N. EDGE FIELD ENTRANCE. REF'D AND EST. 42" L. x 5/8" RBR ON  
TOP OF C.M., TO +/- SUBGRADE DURING CONSTRUCTION (POS. DISTURBED).  
AFTER ACC SURFACING, RE-EST. CORNER WITH 6" L. x 5/8" RBR. IN A.C.C.  
PVMT., WITH 2" ALUM. CAP STAMPED "BLACK HAWK COUNTY LAND CORNER"  
(ADDITIONAL TEMP. TIES UTILIZED DURING CONSTRUCTION, FOR RE-EST LOC.)

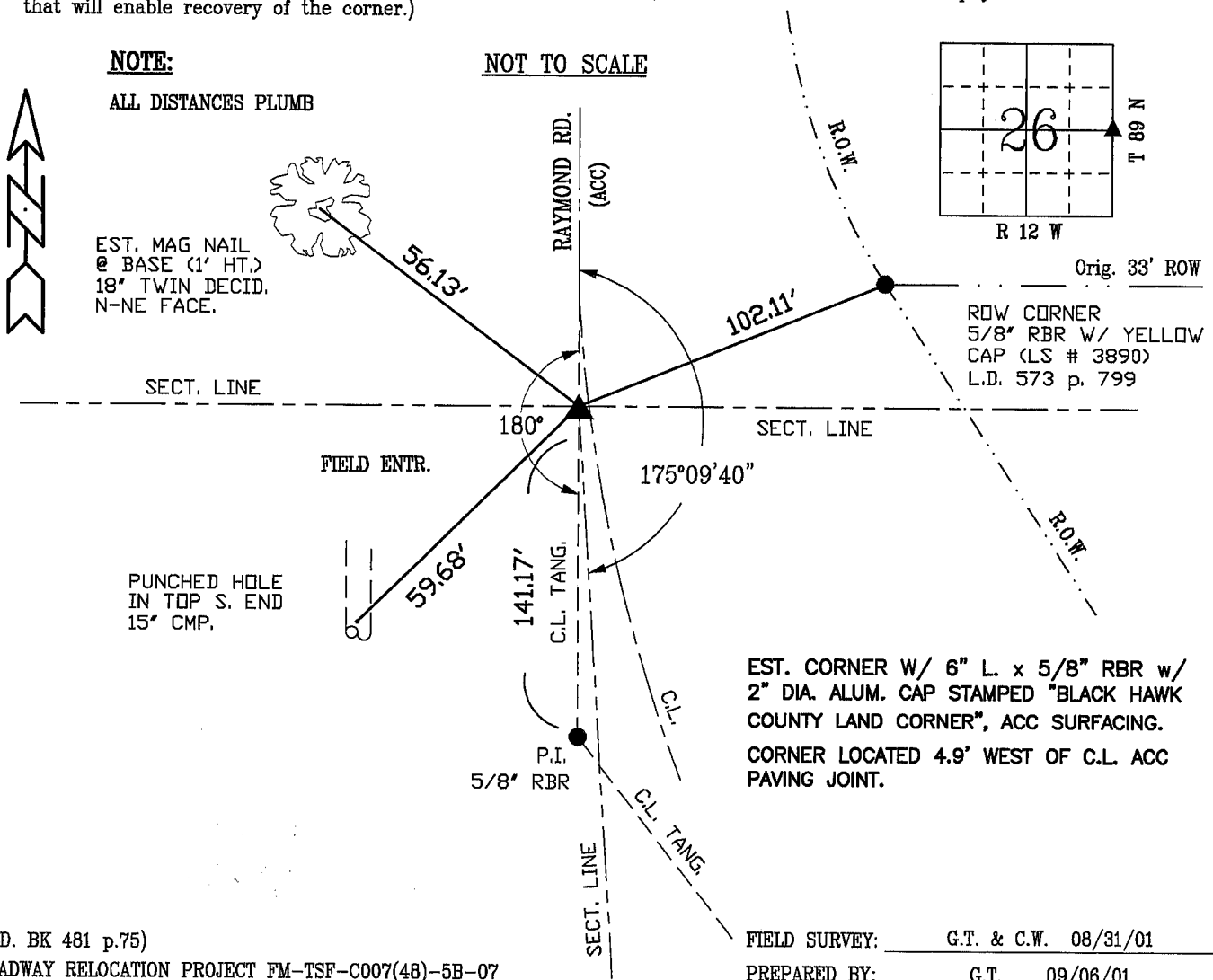
## PLAN - VIEW

(Show a minimum of three reference ties to durable physical objects, relevant monuments and physical conditions that will enable recovery of the corner.)

**NOTE:**

ALL DISTANCES PLUMB

NOT TO SCALE



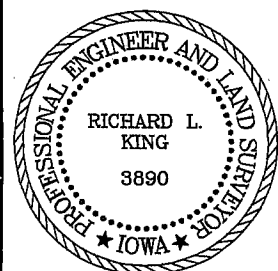
(FLD. BK 481 p.75)

ROADWAY RELOCATION PROJECT FM-TSF-C007(48)-5B-07

FIELD SURVEY: G.T. & C.W. 08/31/01

PREPARED BY: G.T. 09/06/01

## CERTIFICATION



I hereby certify that this land surveying document was prepared and the related survey work was performed by me or under my direct personal supervision and that I am a duly licensed Land Surveyor under the laws of the State of Iowa.

Richard L. King 9/11/01  
Richard L. King (date)

License Number 3890

My license renewal date is December 31, 2001

Pages or sheets covered by this seal:

This Land Corner Certificate Only.

LIST CORNERS TO BE INDEXED

Corner      Section - Township - Range

E. 1/4      26      89 N      12 W

W. 1/4      25      89 N      12 W