

PREPARED BY: *BLACK HAWK COUNTY ENGINEERS OFFICE
316 E. FIFTH STREET, ROOM 211 WATERLOO, IOWA 50703

PH.# (319) 833-3008
FAX.# (319) 833-3139
SLSI 9-94
BHCO 03-09

UNITED STATES PUBLIC LAND SURVEY CORNER CERTIFICATE OF
Land Survey Monuments situated in Section 25, Township 89 N,
Range 12 W, of the Fifth Principal Meridian, BLACK HAWK County, Iowa.
Previously recorded in FILE Book 2010, Page 019757, in County Recorder's Office.
(Show reason for preparing this certificate): The corner monument has been Replaced or Modified, per Ia. Code 355.11(1)(c)

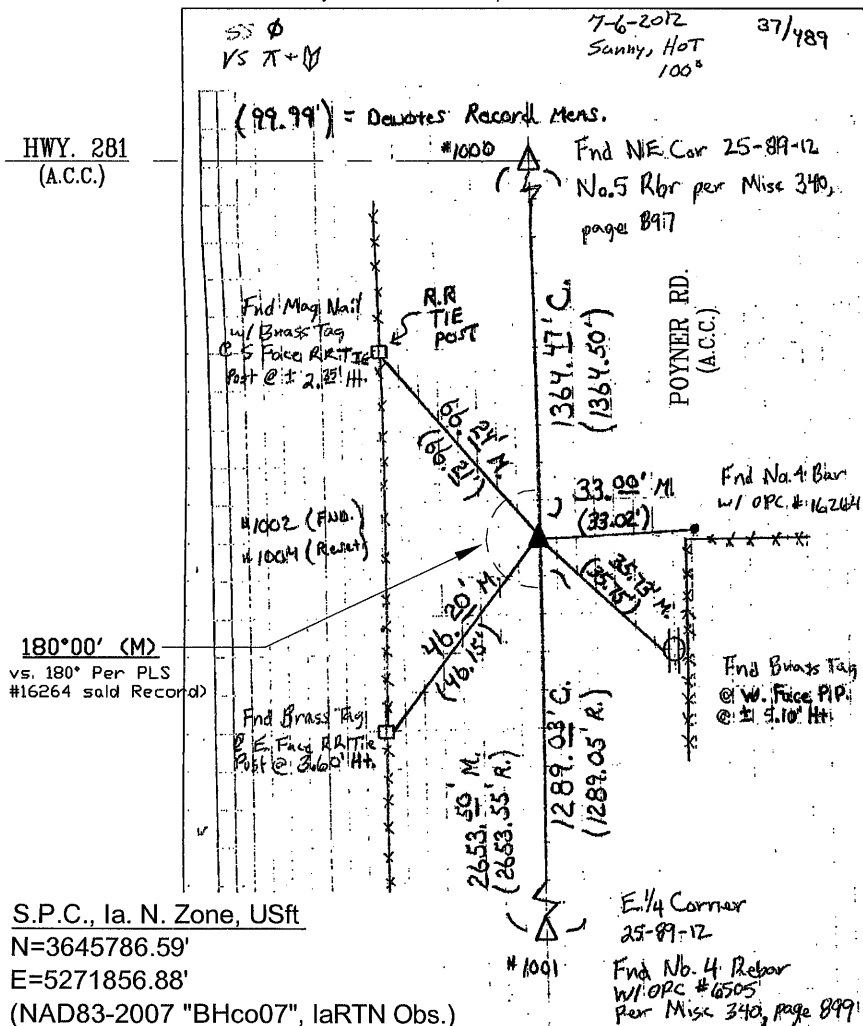
(Evidence and detailed procedures used in establishing the corner position(s) and monumentation found or placed.)
Monument Description and Remarks: N. 1/16th COR., EAST:
FOUND 1/2" (#4) REBAR w/o CAP, WITH TOP ±6" BENT ±90° SOUTH PER COUNTY ROAD
MAINTENANCE EQUIPMENT. CURRENT RECORD DENOTED "CORNER SET @ PRORATION BETWEEN
N.E. SECT. COR. AND E. 1/4 COR. OF SAID SECTION 25 PER WPA CHAINING NOTES" OF
RECORD. EXISTING #4 REBAR PLUMB BELOW 6" DEEP, AND TEMP. REF. PLUMB LOCATION,
PULLED BENT REBAR AND RESET CORNER WITH 5/8" (#5) REBAR (@ PLUMB REFERENCE)
w/Y.P.C. @ -3" BELOW GRANULAR ROAD SURFACE. CORNER RETIED & FILED TO UPDATE
PUBLIC RECORD. CORNER LOCATION AS FOUND HELD FOR RE-ESTABLISHED LOCATION,
BEING ±0.03' OF RECORD BETWEEN LAND CORNER REFERENCES.

PLAN VIEW

"NOT TO SCALE"

BHco Hist. Ties: N/A-WPA R.L.M. split ONLY
FIELD BOOK: BHco. #489 p.37

(Show a minimum of three reference ties to durable physical objects, relevant monuments and physical conditions that will enable recovery of the corner.)



S.P.C., Ia. N. Zone, USft
N=3645786.59'
E=5271856.88'
(NAD83-2007 "BHco07", IaRTN Obs.)

- 1.) TIES PER EDM MEASURE IN EITHER PRISM "OR" NON-PRISM MODE, WHILE UTILIZING "INDIRECT" MEASURE, WITH ALL DISTANCES PLUMB/HORIZ. (HD), UNLESS DENOTED.
- 2.) SECTION LINE MEASURE REFERS TO "LOCAL GROUND" DIST. AND INCLUDES ELLIPSOIDAL (COMBINED) SCALE FACTOR FROM S.P.C. GRID INVERSE AS OBSERVED, PER AVG. SCALE FACTOR = x1.000091135343 FROM TOPSURV V8.2.2 FC2500 FIRMWARE w/ORIGIN @ N.E. CORNER SAID SECTION (#1000).

FIELD SURVEY: S.S. & V.S. 07/06/12
PREPARED BY: G.T. 8/21/12

CERTIFICATION



I hereby certify that this land surveying document was prepared and the related survey work was performed by me or under my direct personal supervision and that I am a duly licensed Land Surveyor under the laws of the State of Iowa.
Geoffrey Allen Tinker 08/21/2012 (date)
License Number 15748
My license renewal date is December 31, 2012
Pages or sheets covered by this seal:
This Land Corner Certificate Only.

LIST CORNERS TO BE INDEXED

Corner	Section	Township	Range
N.E. Cor.	25	89 N	12 W
SE1/4-NE1/4			
S.W. Cor.	30	89 N	11 W
NW1/4-NW1/4			

INDEX OF ABBREVIATIONS

(M) = "Measured" Dimension
(P) = "Platted" Dimension
(R) = "Record" Dimension
(C) = "Calculated" Dimension
"IGS" = Iowa Geodetic Survey
"WPA" = Works Progress Admin. Survey
"G" = per George Miller Survey (BHco Surveyor 1858-1860)
"B" = per John Ball Survey (BHco Surveyor 1866-1891)
"N" = per Nathan Barber Survey (BHco Surveyor 1908-1931)
"NP" = Reflectorless EDM Meas.
"MLM" = Indirect Measure
"CM" = Concrete Monument
"SM" = Survey Marker Spike/Tag
"PK" = PK/MAG Nail Brand Style