

UNITED STATES PUBLIC LAND SURVEY CORNER CERTIFICATE OF

Land Survey Monuments situated in Section 25, Township T 89 N, Range R 12 W,
of the Fifth Principal Meridian, BLACK HAWK County, Iowa. Previously recorded
in BK 309 p. 862 2/3/94 in County Recorder's Office.

MISC. (book, page, document number, etc.) PLS 8033
S^{1/4} COR (Show reason for preparing this certificate, the evidence and detailed procedures used in establishing the corner positions and
24-89N-12W monumentation found or placed.)

Monument Description and Remarks:

A - FD REBAR ON CENTERLINE OF HWY

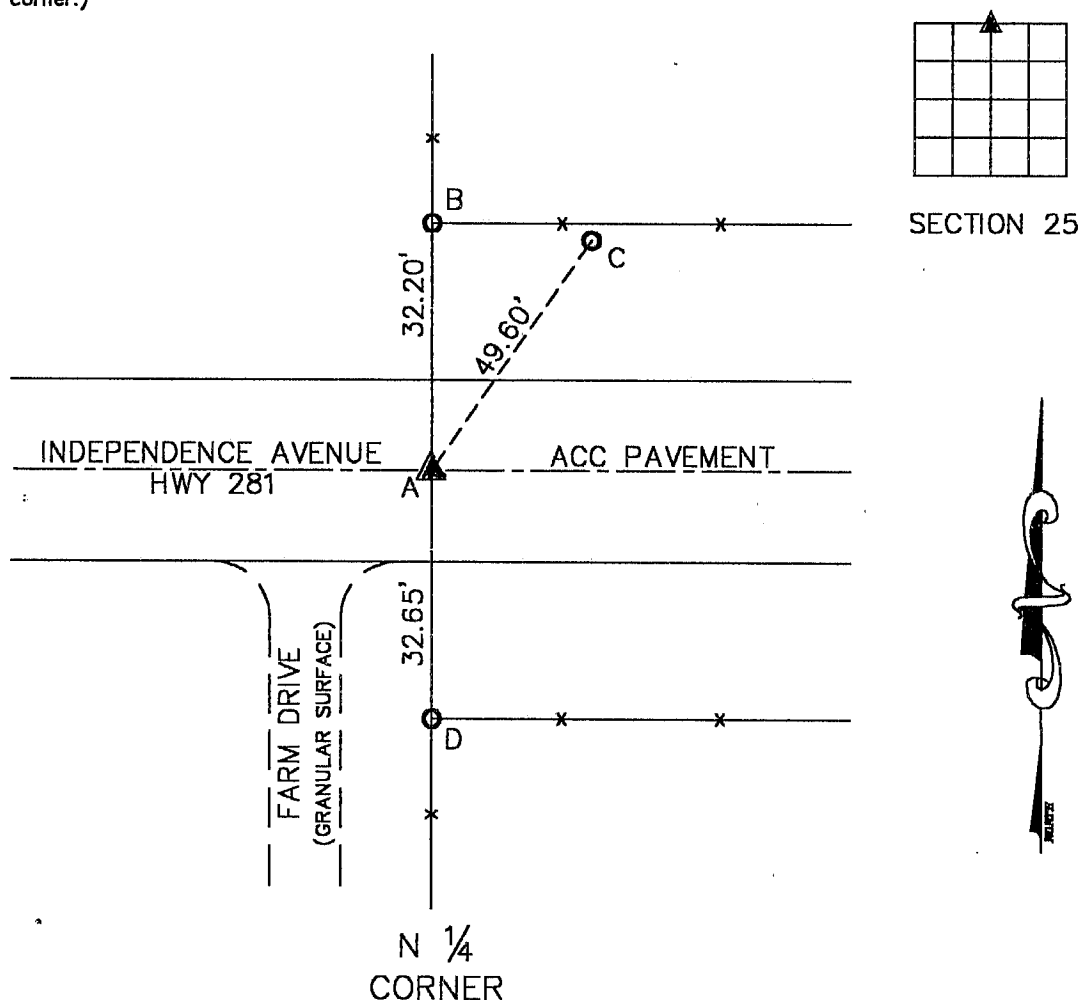
B - STEEL FENCE CORNER POST

C - POWER POLE w/BRASS TAG #8033

D - STEEL FENCE CORNER POST

PLAN VIEW

(Show a minimum of three reference ties to durable physical objects, relevant monuments and physical conditions that will enable recovery of the corner.)



I hereby certify that this land surveying document was prepared and the related survey work was performed by me or under my direct personal supervision and that I am a duly licensed Land Surveyor under the laws of the State of Iowa.

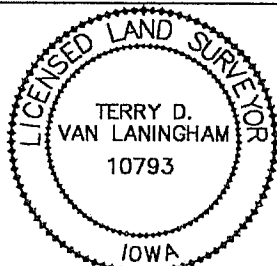
Terry D. Van Laningham NOV 01, 2000
Terry D. Van Laningham, PLS Date:

License Number 10793

My registration renewal date is December 31, 2001

Pages or sheets covered by this seal:

THIS SHEET ONLY



List Corners to be Indexed

Corners	Section	Township	Range
N 1/4 CORNER	25	T 89 N	R 12 W

PAGE 2 OF 3

TERRY D. VAN LANINGHAM, PLS. INC.

120 2ND STREET SW

WAVERLY, IOWA

(319) 352-0801