

UNITED STATES PUBLIC LAND SURVEY CORNER CERTIFICATE OF

Land Survey Monuments situated in Section 25, Township T 89 N, Range R 12 W,
of the Fifth Principal Meridian, BLACK HAWK County, Iowa. Previously recorded
in _____ in County Recorder's Office.

(book, page, document number, etc.)

(Show reason for preparing this certificate, the evidence and detailed procedures used in establishing the corner positions and
monumentation found or placed.)

Monument Description and Remarks:

A - FD 1/2" REBAR WITH ORANGE CAP #6505

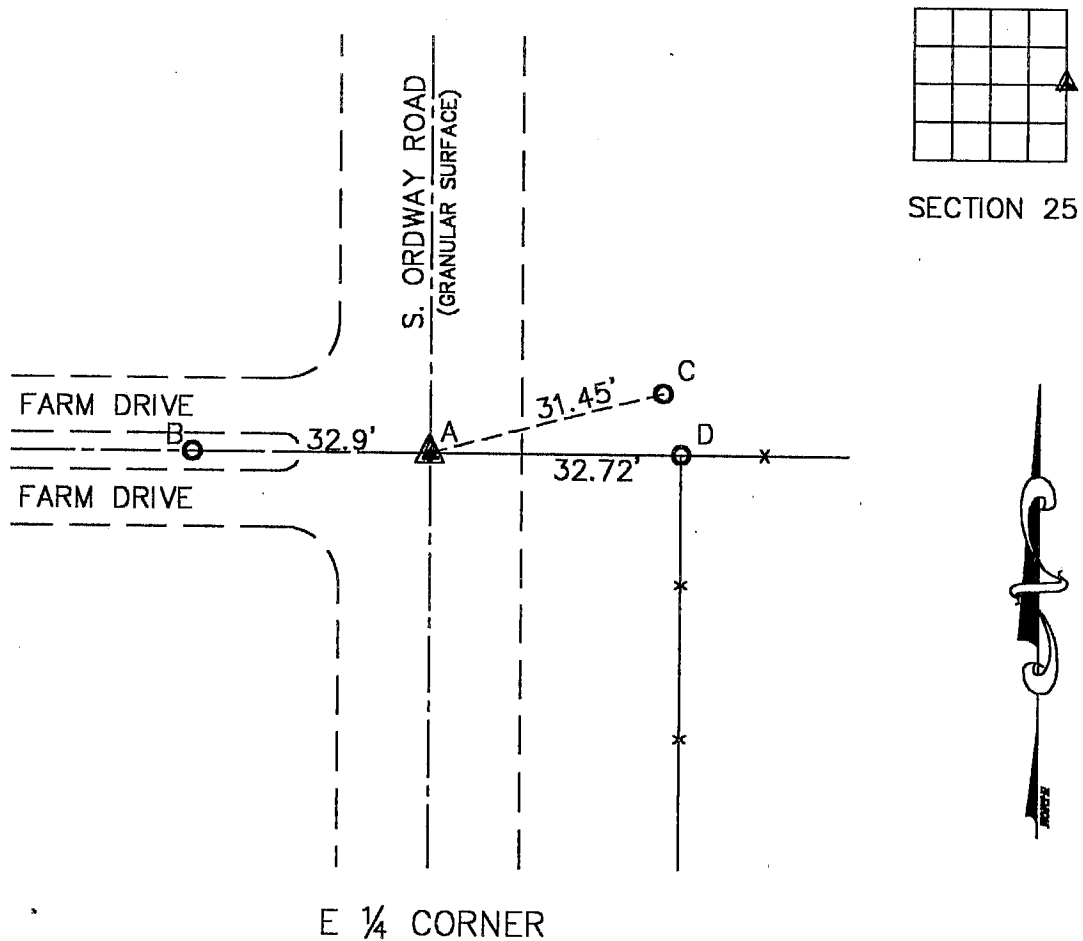
B - POWER POLE WITH w/TAG #6505

C - POWER POLE WITH w/TAG #6505

D - STEEL FENCE CORNER POST

PLAN VIEW

(Show a minimum of three reference ties to durable physical objects, relevant monuments and physical conditions that will
enable recovery of the corner.)



I hereby certify that this land surveying document was prepared
and the related survey work was performed by me or under my
direct personal supervision and that I am a duly licensed Land
Surveyor under the laws of the State of Iowa.

Terry D. Van Laningham
Terry D. Van Laningham, PLS

NOV 01, 2000

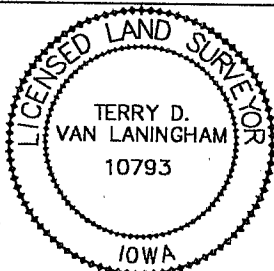
Date:

License Number 10793

My registration renewal date is December 31, 2001

Pages or sheets covered by this seal:

THIS SHEET ONLY



List Corners to be Indexed

Corners	Section	Township	Range
E 1/4 CORNER	25	T 89 N	R 12 W

PAGE 3 OF 3

TERRY D. VAN LANINGHAM, PLS. INC.

120 2ND STREET SW

WAVERLY, IOWA

(319) 352-0801