

Reserved for County Recorder's use.

2025-16472

RECORDED: 11/10/2025 09:39:56 AM

RECORDING FEE: \$7.00

REVENUE TAX: \$

COMBINED FEE: \$7.00

SANDIE L. SMITH, RECORDER  
BLACK HAWK COUNTY, IOWA

Kyle J. Helland, 6109 Chancellor Drive, Cedar Falls, Iowa 50613-6916, (319)-266-0161

# UNITED STATES PUBLIC LAND SURVEY CORNER CERTIFICATE OF

LAND SURVEY MONUMENTS SITUATED IN SECTION NO. 24, TOWNSHIP NO. 89 NORTH, RANGE NO. 12 WEST OF THE FIFTH PRINCIPAL MERIDIAN, BLACK HAWK COUNTY, IOWA.  
PREVIOUSLY RECORDED IN N/A.

(SHOW REASON FOR PREPARING THIS CERTIFICATE, THE EVIDENCE AND DETAILED PROCEDURES USED IN ESTABLISHING THE CORNER POSITIONS AND MONUMENTATION FOUND OR PLACED.)

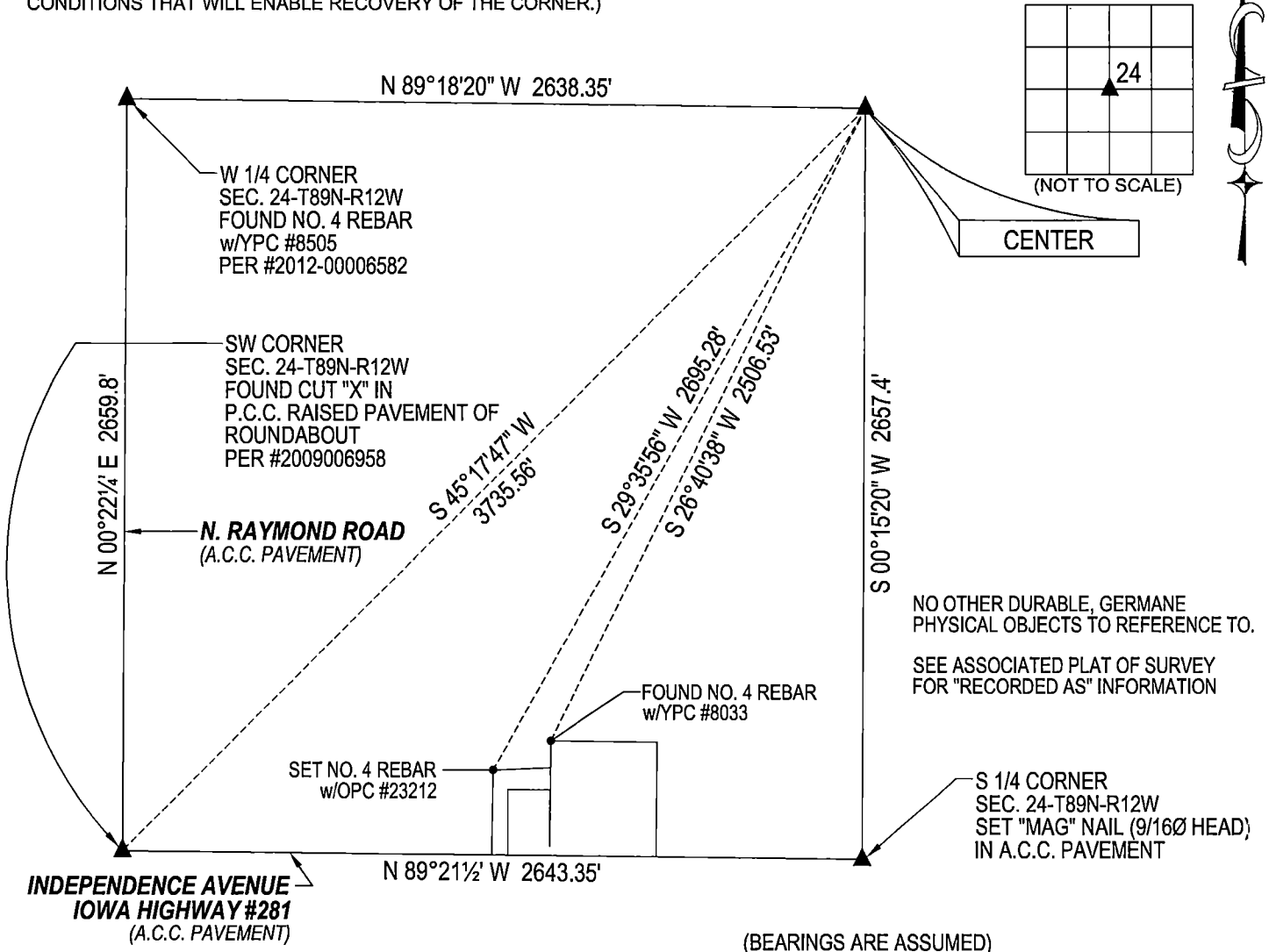
MONUMENT DESCRIPTION AND REMARKS:

NO USPLSCC ON FILE. SURVEY COMPLETED IN THE SW 1/4 OF SEC. 24-T89N-R12W.

→ **CENTER:** NO BLACK HAWK COUNTY ENGINEER TIES ARE AVAILABLE. CORRECTION PLAT OF SURVEY RECORDED IN FILE #2012-00002827 DATED 06/30/2011 CALLS FOR [USED 2" STEEL POST SET IN CONC.]. FOUND 4"o.d. STEEL CORNER POST IN CONCRETE AND UTILIZED AS THE CORNER.

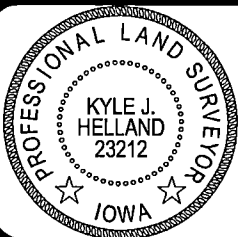
## PLAN VIEW

(SHOW A MINIMUM OF THREE REFERENCE TIES TO DURABLE PHYSICAL OBJECTS, RELEVANT MONUMENTS AND PHYSICAL CONDITIONS THAT WILL ENABLE RECOVERY OF THE CORNER.)



HELLAND ENGINEERING & SURVEYING, LTD.  
6109 Chancellor Drive  
Cedar Falls, Iowa 50613-6916  
(319)-266-0161

BRASS TAG = 4d. NAIL & 13/16"Ø BRASS TAG DRAWN BY: JPH  
SHINER = 1"Ø STEEL SHINER w/MASONRY NAIL  
OPC = PLASTIC CAP (O=ORANGE, R=RED, Y=YELLOW)  
(00) RECORDED AS FILE NAME: 25-212-29.DWG



I hereby certify that this land surveying document was prepared and the related survey work was performed by me or under my direct personal supervision and that I am a duly licensed Professional Land Surveyor under the laws of the State of Iowa.  
*Kyle J. Helland*  
Kyle J. Helland  
License Number 23212  
My license renewal date is December 31, 2025.  
All pages or sheets are covered by this seal except:

### LIST CORNERS TO BE INDEXED

CORNER	SECTION / TOWNSHIP / RANGE
CENTER	24 89N 12W