


Recorded By: Michael R. Fagle, P.L.S.  AECOM, 501 Sycamore St., Suite 222, Waterloo, Iowa 50703 1-319-232-6531

UNITED STATES PUBLIC LAND SURVEY CORNER CERTIFICATE
OF

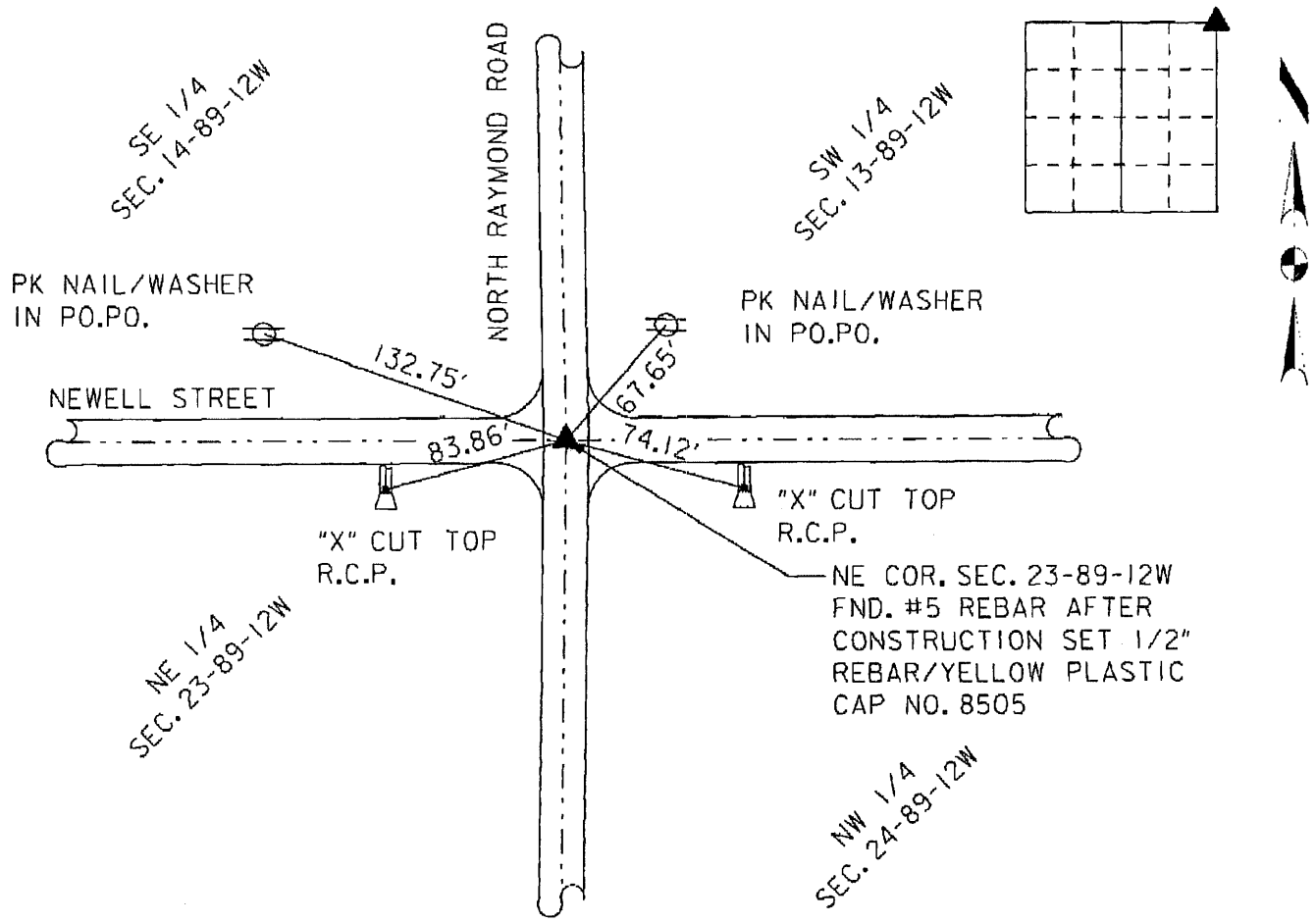
Land Survey Monuments situated in Section 23, Township 89 North
Range 12 West, of the Fifth Principal Meridian, Black Hawk
County, Iowa. Previously recorded in Fee Book 2005 14316
in County Engineer's Office. (Book, Page, Document Number, etc.)

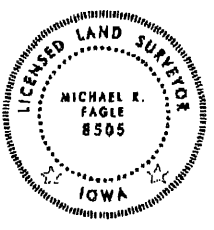
(Show reason for preparing this certificate, the evidence and detailed procedures used in establishing the corner positions and monumentation found or placed.)

Monument Description and Remarks: Found no.5 rebar, after construction was complete on Black Hawk County, North Raymond Road (Project No. LFM-95--7X), a 1/2" x 24" rebar with yellow plastic cap No.8508 was set.

PLAN - VIEW

(Show a minimum of three reference ties to durable physical objects, relevant monuments and physical conditions that will enable recovery of the corner.)





I hereby certify that this Land Surveying document was prepared by me or under my direct personal supervision and that I am a duly Licensed Land Surveyor under the laws of the State of Iowa.

Michael R. Fagle 10-04-2011
MICHAEL R. FAGLE Date
License number 8505
My license renewal date is December 31, 2012
Pages or sheets covered by this seal:
THIS SHEET

List Corners to be Indexed

Corners	Section	Twp	Range
Northeast Corner	23	T 89 N	R 12 W