

*Ret: VJ Engineering 1501 Technology Prkwy Suite 100 CF

United States Public Land Survey Corner Certificate of

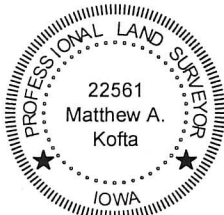
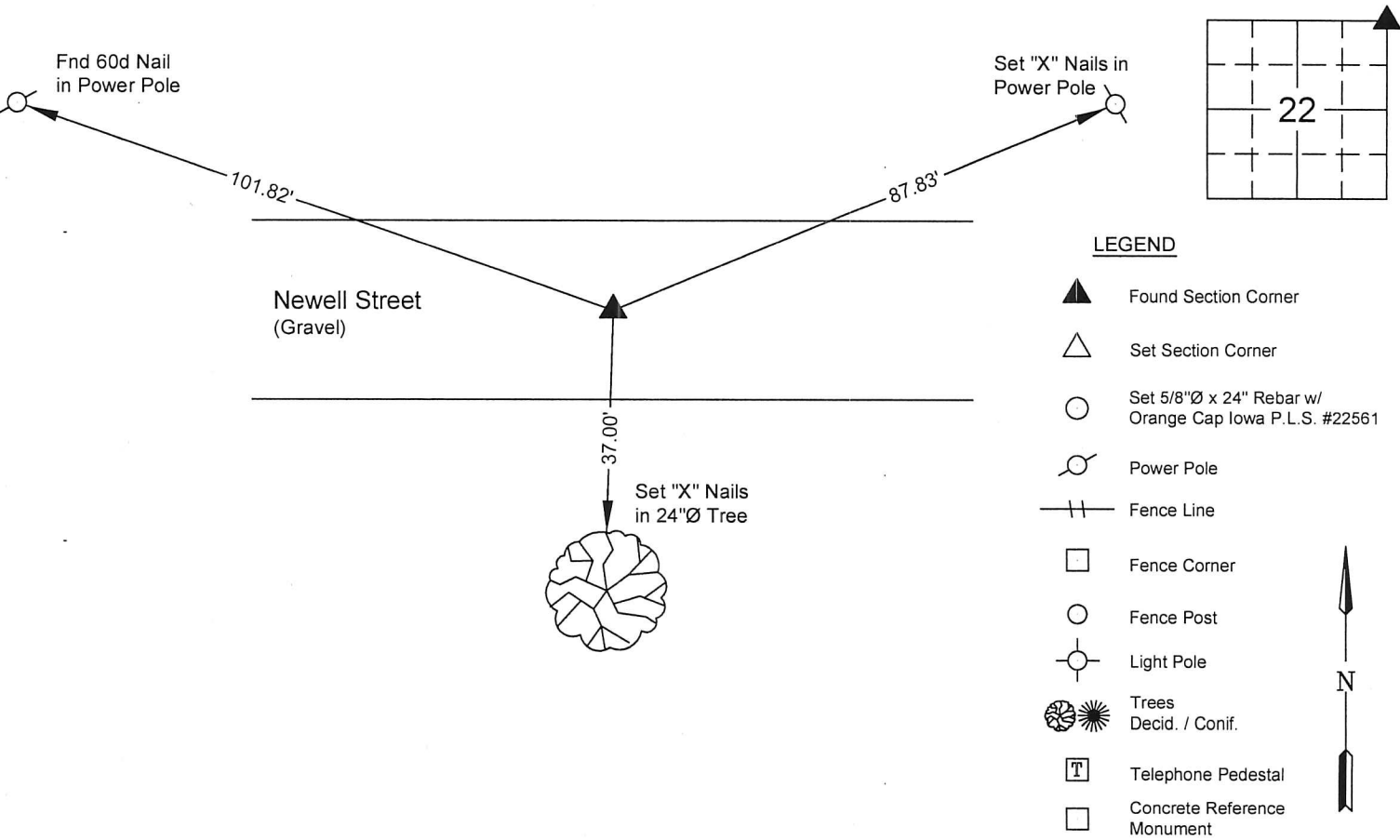
Land Survey Monuments situated in Section No. 22, Township No. 89 North, Range No. 12 West, of the Fifth Principal Meridian, Black Hawk County, Iowa Previously recorded in Doc. No. 2007 19471.

Show reason for preparing this certificate, the evidence and detailed procedures used in establishing the corner positions and monumentation found or placed.)

Monument Description and Remarks: Northeast Corner Section 22 T89N R12W
Corner Certificate Doc. No. 2007 19471 calls out finding a 1"Ø Pinched Pipe, searched area with metal locator and found 1"Ø Pinched Pipe in gravel road.
Corner was used for a survey in the SW 1/4 SE 1/4 of Section 15 T89N R12W.
This corner certificate is being prepared due to a change to the reference ties.

PLAN - VIEW

(Show a minimum of three reference ties to durable physical objects, relevant monuments and physical conditions that will enable recovery of the corner.)



I hereby certify that this land surveying document was prepared and the related survey work was performed by me or under my direct personal supervision and that I am a duly licensed Land Surveyor under the laws of the State of Iowa.
Matthew A. Kofa 4-24-15
Matthew A. Kofa, P.L.S. Date
License Number 22561
My license renewal date is December 31, 2016
Pages or sheets covered by this seal: 1

List Corner to be Indexed

Corner	Section	Twp	Range
Northeast Corner	22	89 North	12 West



VJ Engineering
1501 Technology Parkway
Cedar Falls, Iowa - 319-266-5829

Section Corner
Reference Ties

file no.
158031
drawn by
MAK
date
4/24/15