



Doc ID: 006745210001 Type: GEN
Recorded: 04/29/2015 at 10:29:38 AM
Fee Amt: \$7.00 Page 1 of 1
Black Hawk County Iowa
SANDIE L. SMITH RECORDER

File 2015-00017410

*Ret: VJ Engineering 1501 Technology Prkwy Suite 100 CP

United States Public Land Survey Corner Certificate of

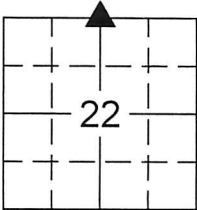
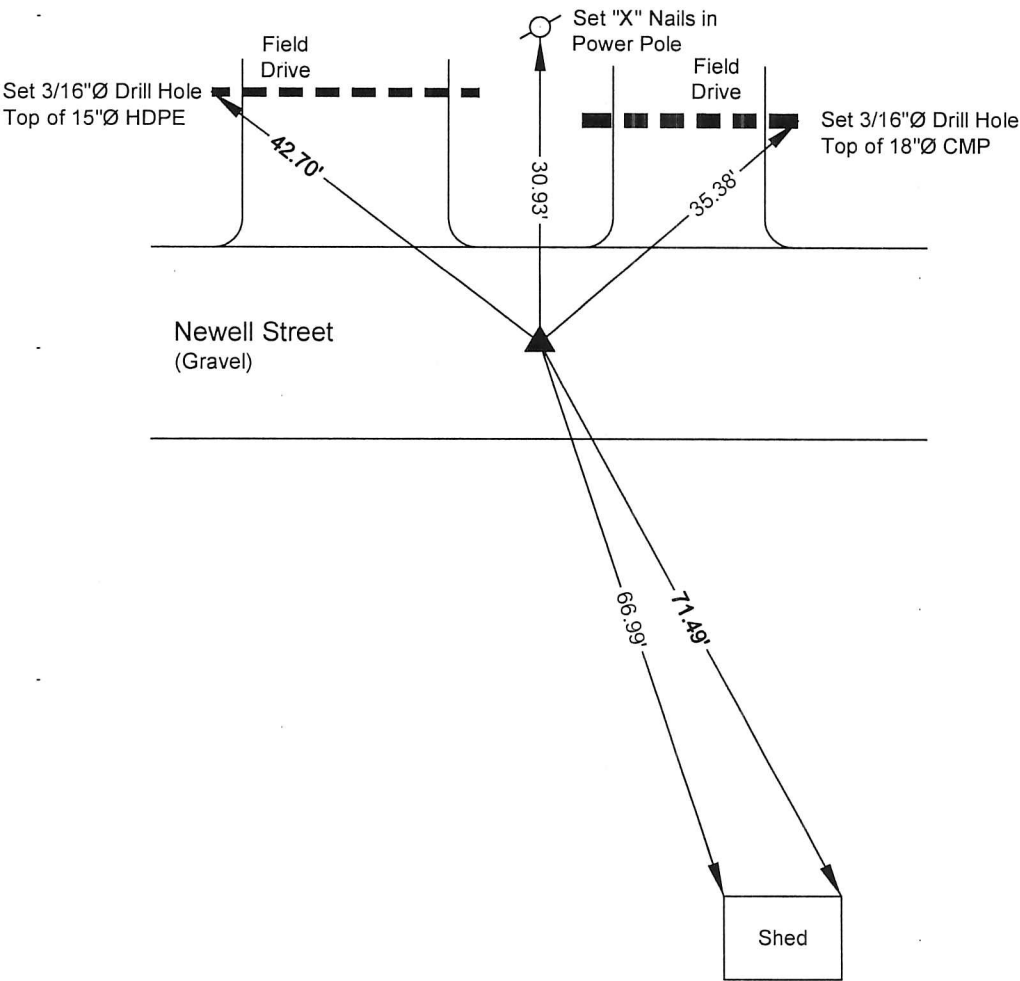
Land Survey Monuments situated in Section No. 22, Township No. 89 North, Range No. 12 West, of the Fifth Principal Meridian, Black Hawk County, Iowa
Previously recorded in 323 Misc. 991

Show reason for preparing this certificate, the evidence and detailed procedures used in establishing the corner positions and monumentation found or placed.)

Monument Description and Remarks: North Quarter Corner Section 22 T89N R12W
Corner Certificate 323 Misc. 991 calls out finding a 1/2"Ø rebar, searched area with metal locator and found 1/2"Ø rebar in gravel road.
Corner was used for a survey in the SW 1/4 SE 1/4 of Section 15 T89N R12W.
This corner certificate is being prepared due to a change to the reference ties.

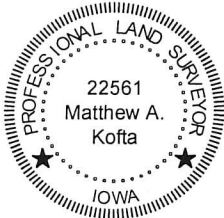
PLAN - VIEW

(Show a minimum of three reference ties to durable physical objects, relevant monuments and physical conditions that will enable recovery of the corner.)



LEGEND

- Found Section Corner
- Set Section Corner
- Set 5/8"Ø x 24" Rebar w/ Orange Cap Iowa P.L.S. #22561
- Power Pole
- Fence Line
- Fence Corner
- Fence Post
- Light Pole
- Trees Decid. / Conif.
- Telephone Pedestal
- Concrete Reference Monument



I hereby certify that this land surveying document was prepared and the related survey work was performed by me or under my direct personal supervision and that I am a duly licensed Land Surveyor under the laws of the State of Iowa.

Matthew A. Kofta, P.L.S. Date 4-24-15
License Number 22561
My license renewal date is December 31, 2016
Pages or sheets covered by this seal: 1

List Corner to be Indexed

Corner	Section	Twp	Range
North 1/4	22	89 North	12 West



VJ Engineering
1501 Technology Parkway
Cedar Falls, Iowa - 319-266-5829

Section Corner
Reference Ties

file no.
158031
drawn by
MAK
date
4/24/15