

Misc  
INDEX  
MARGIN  
PROOF  
COMPARE

BLACK HAWK COUNTY IOWA: SS  
Filed for record Feb 14, 1997 at 15260  
3:00 P.M. and recorded in Book 323  
of Misc Page 991  
Catherine J. Lass Recorder  
Fee 1-5.00/

WAYNE CLAASSEN ENGINEERING AND SURVEYING, INC.  
P.O. BOX 898 WATERLOO, IOWA 50704-0898

PHONE: (VOICE) 319-235-6294  
(FAX) 319-235-0028

## UNITED STATES PUBLIC LAND SURVEY CORNER CERTIFICATE

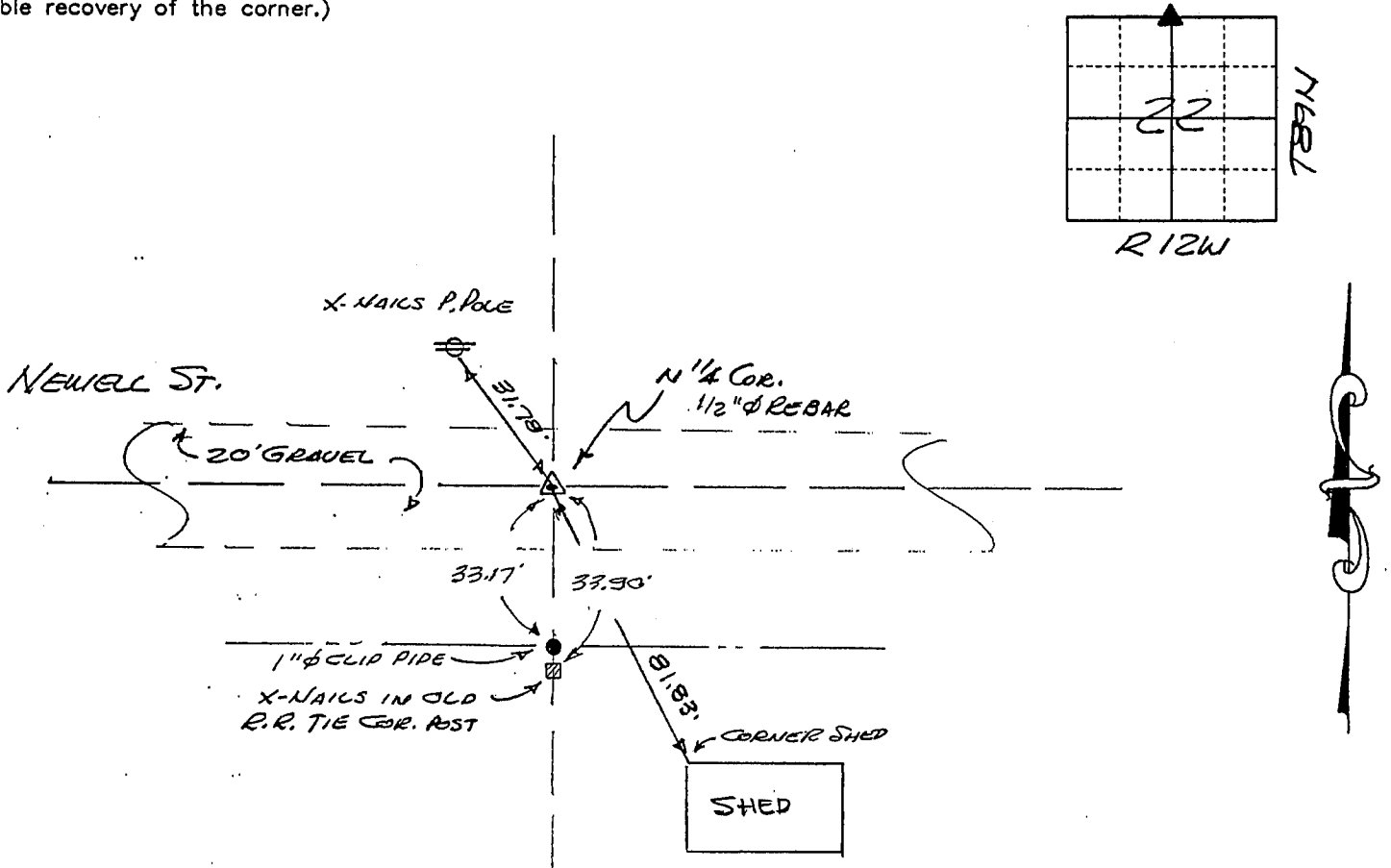
Land Survey Monuments situated in Section 22, Township 89N, Range 12W, of the Fifth Principal Meridian, BLACK HAWK County, Iowa.  
Previously recorded in N/A in County Recorder's Office.  
(book, page, document number, etc.)

(Show reason for preparing this certificate, the evidence and detailed procedures used in establishing the corner positions and monumentation found or placed.)

Monument Description and Remarks FIND 1/2" Ø REBAR 7" DEEP IN GRAVEL.  
CES FOUND 3CM 2' DEEP AT THIS LOCATION IN 1980. 1/2" Ø REBAR WAS SET  
OVER & ALONG SIDE OF MONUMENT.

### PLAN - VIEW

(Show a minimum of three reference ties to durable physical objects, relevant monuments and physical conditions that will enable recovery of the corner.)



457-56

I hereby certify that the survey work was completed and this certificate was prepared by me or under my direct personal supervision and that I am a duly licensed land surveyor under the laws of the state of Iowa.

Signature: F. William King

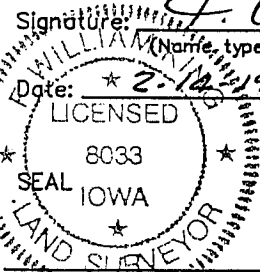
(Name, typed or printed:) F. WILLIAM KING

Date: 2-14-1997

Lic. No. 8033

#### List Corners to be Indexed

Corners	Section	Twp	Range
<u>N 1/4</u>	<u>22</u>	<u>89N</u>	<u>12W</u>



BOOK 323 PAGE 991