

Misc  
INDEX  
MARGIN  
PROOF  
COMPARE

BLACK HAWK COUNTY IOWA: SS  
Filed for record Feb 14, 19 97 at  
3:00 P.M. and recorded in Book 323,  
of Misc Page 990.

15259

Patricia A. Less Recorder  
Fee 1-5.00/

WAYNE CLAASSEN ENGINEERING AND SURVEYING, INC.  
P.O. BOX 898 WATERLOO, IOWA 50704-0898

PHONE: (VOICE) 319-235-6294  
(FAX) 319-235-0028

## UNITED STATES PUBLIC LAND SURVEY CORNER CERTIFICATE

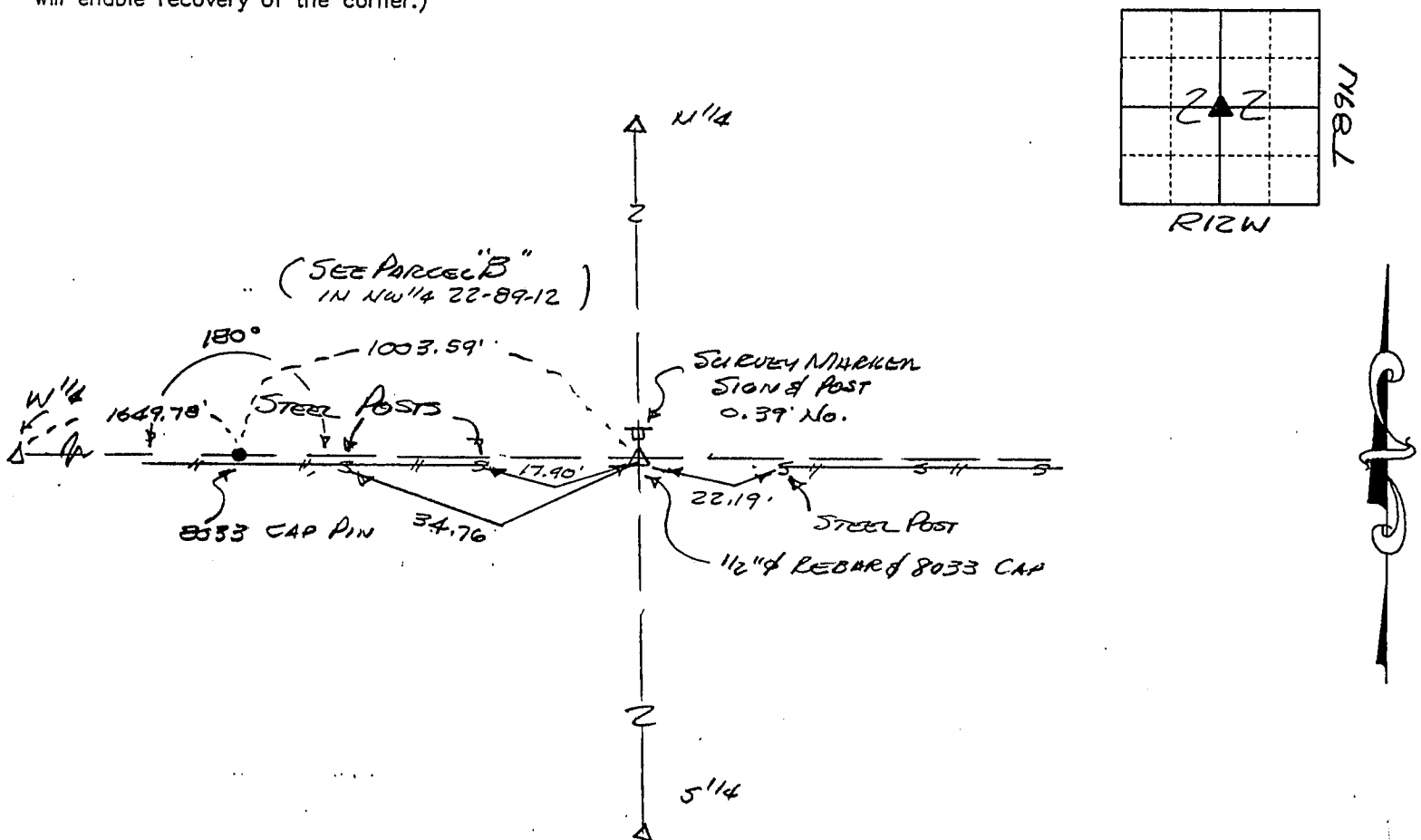
Land Survey Monuments situated in Section 22, Township 89N, Range 12W, of the Fifth Principal Meridian, BLACK HAWK County, Iowa.  
Previously recorded in N/A in County Recorder's Office.  
(book, page, document number, etc.)

(Show reason for preparing this certificate, the evidence and detailed procedures used in establishing the corner positions and monumentation found or placed.)

Monument Description and Remarks CENTER OF SECTION - WAS SET ON N-S LINE N<sup>1</sup>/<sub>4</sub> TO S<sup>1</sup>/<sub>4</sub> CORNERS. W<sup>1</sup>/<sub>4</sub> WAS FOUND BUT E<sup>1</sup>/<sub>4</sub> WAS NOT FOUND. CES SURVEY OF 1980 WAS USED TO RESET CENTER @ INTER. LINE W<sup>1</sup>/<sub>4</sub> COR THROUGH P.I.N @ 1649.78' EAST OF W<sup>1</sup>/<sub>4</sub> COR. THIS LINE WAS ESTABLISHED IN 1980 WHEN E<sup>1</sup>/<sub>4</sub> WAS FOUND.

### PLAN - VIEW

(Show a minimum of three reference ties to durable physical objects, relevant monuments and physical conditions that will enable recovery of the corner.)



457-56

I hereby certify that the survey work was completed and this certificate was prepared by me or under my direct personal supervision and that I am a duly licensed land surveyor under the laws of the state of Iowa.

Signature: F. William King  
(Name typed or printed:) F. WILLIAM KING  
Date: 2-14-1997 Lic. No. 8033

8033  
SEAL IOWA  
LAND SURVEYOR

#### List Corners to be Indexed

Corners	Section	Twp	Range
CENTER	22	89N	12W

BOOK 323 PAGE 990