

UNITED STATES PUBLIC LAND SURVEY CORNER CERTIFICATE
OF

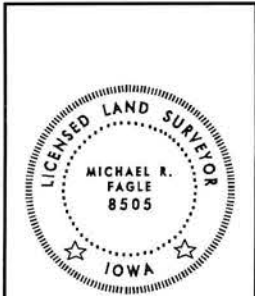
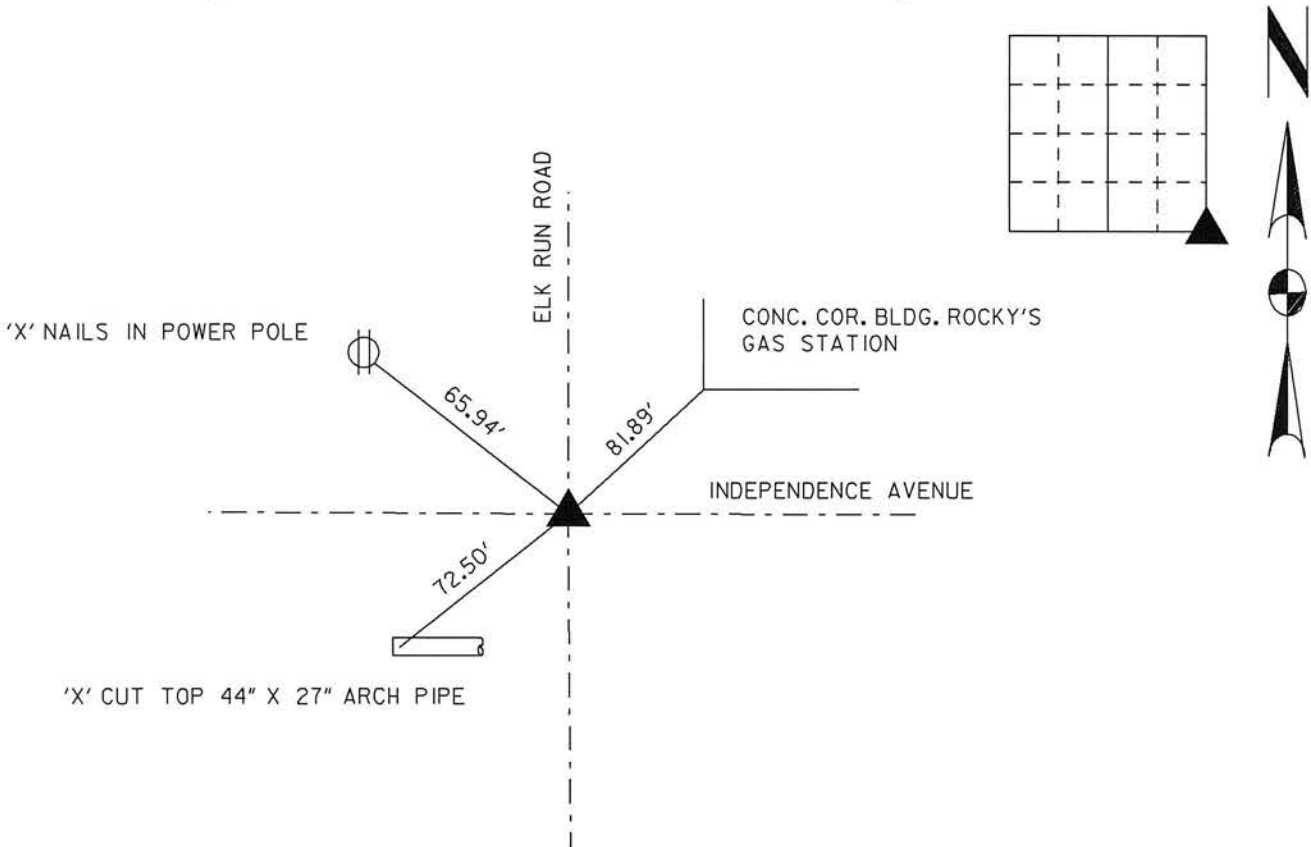
Land Survey Monuments situated in Section 21, Township 89 North,
Range 12 West, of the Fifth Principal Meridian, Black Hawk
County, Iowa. Previously recorded in Misc Book 301 Page 58 Black Hawk County
in County Recorder's Office. (Book, Page, Document Number, etc.)

(Show reason for preparing this certificate, the evidence and detailed procedures used in establishing the corner positions and monumentation found or placed.)

Monument Description and Remarks: Found Aluminum Cap Attached To 5/8" Iron Bar
Epoxied in Concrete at Center of Intersection of Elk Run Road and
Independence Avenue.

PLAN - VIEW

(Show a minimum of three reference ties to durable physical objects, relevant monuments and physical conditions that will enable recovery of the corner.)



I hereby certify that this Land Surveying document was prepared by me or under my direct personal supervision and that I am a duly Licensed Land Surveyor under the laws of the State of Iowa.

Michael R. Fagle 3-29-01
MICHAEL R. FAGLE Date
License number 8505
My license renewal date is December 31, 2002
Pages or sheets covered by this seal:
THIS SHEET

List Corners to be Indexed			
Corners	Section	Twp	Range
Southeast Corner	21	T 89 N	R 12 W

AFFIDAVIT FOR CORRECTION TO UNITED STATES PUBLIC
LAND SURVEY CORNER CERTIFICATE FOR THE SOUTHEAST CORNER
SECTION 21, TOWNSHIP 89 NORTH, RANGE 12 WEST, 5TH P.M.
BLACK HAWK COUNTY, IOWA

DATE: MARCH 29, 2001

AFFIDAVIT FOR CORRECTION TO UNITED STATES PUBLIC LAND SURVEY CORNER
CERTIFICATE FOR THE SOUTHEAST CORNER SECTION 21, TOWNSHIP 89 NORTH, RANGE 12 WEST,
BLACK HAWK COUNTY, IOWA, RECORDED IN MISC. BOOK 301 PAGE 58 IN THE BLACK HAWK
COUNTY RECORDER'S OFFICE.

1. THE CORNER TO BE INDEXED, LISTED IN THE LIST CORNERS TO BE INDEXED BOX AT THE LOWER
RIGHT CORNER WAS LISTED AS SOUTHEAST CORNER OF SECTION 12, IT SHOULD BE THE
SOUTHEAST CORNER SECTION 21.

MICHAEL R. FAGLE
P.L.S. NO. 8505

UNITED STATES PUBLIC LAND SURVEY CORNER CERTIFICATE

OF

Land Survey Monuments situated in Section 21, Township 89N, Range 12W, of the Fifth Principal Meridian, BLACK HAWK County, Iowa.
Previously recorded in _____ in County Recorder's Office.

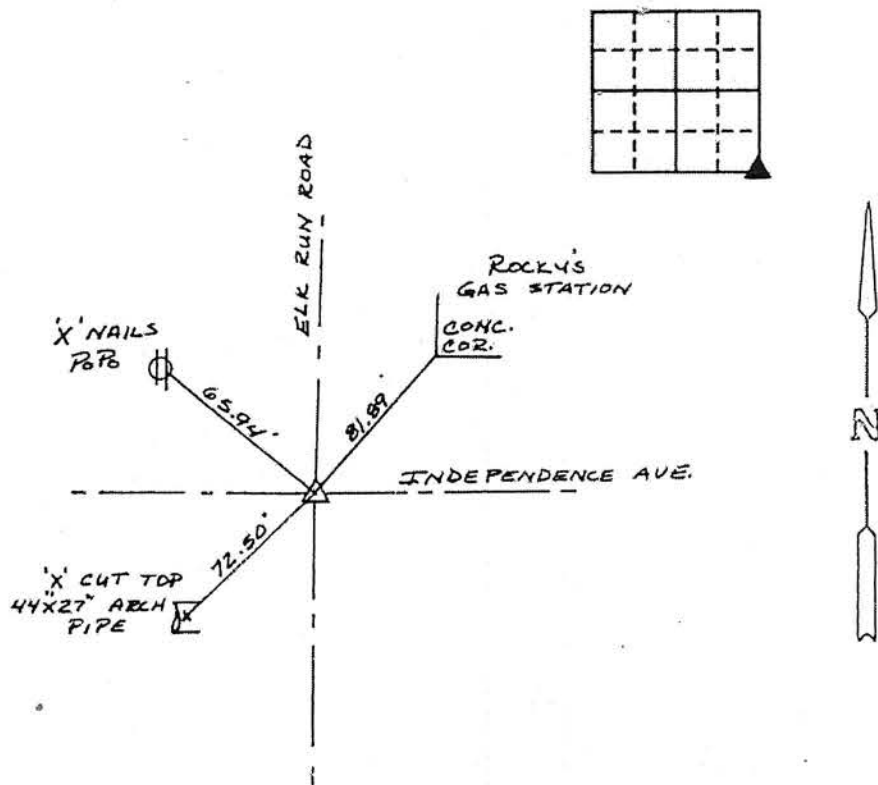
(book, page, document number, etc.)

(Show reason for preparing this certificate, the evidence and detailed procedures used in establishing the corner positions and monumentation found or placed.)

Monument Description and Remarks: ALUMINUM CAP ATTACHED TO 5/8" X 30"IRON BAR EPOXYED IN CONCRETE AT CENTER OF INTERSECTIONELK RUN ROAD AND INDEPENDENCE AVENUE

PLAN - VIEW

(Show a minimum of three reference ties to durable physical objects, relevant monuments and physical conditions that will enable recovery of the corner.)



I hereby certify that the survey work was completed and this certificate was prepared by me or under my direct personal supervision and that I am a duly registered land surveyor under the laws of the state of Iowa.

Signature: Michael R. Fagle
Name typed or printed: MICHAEL R. FAGLE

Date: 5-4-92 Reg. No. 8505



SEAL

Corners	Section	Twp	Range
S.E. COR.	<u>12</u>	<u>89N</u>	<u>12W</u>

List Corners to be Indexed

Section

Twp

Range

(21)