

# UNITED STATES PUBLIC LAND SURVEY CORNER CERTIFICATE

## OF

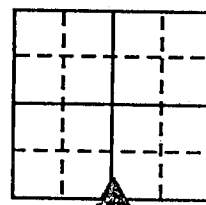
Land Survey Monuments situated in Section 21, Township 89 N, Range 12 W, of the Fifth Principal Meridian, BLACK HAWK County, Iowa.  
Previously recorded in Book \_\_\_\_\_, Page \_\_\_\_\_.

(Show reason for preparing this certificate, the evidence and detailed procedures used in establishing the corner positions and monumentation found or placed.)

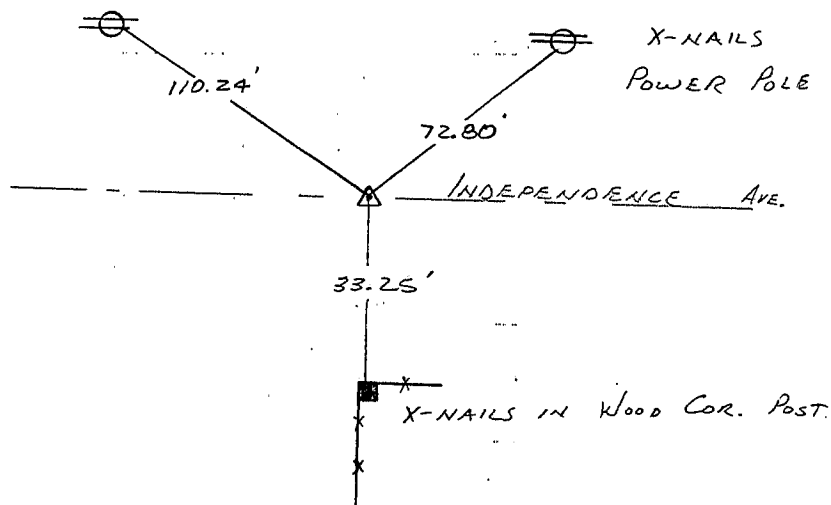
Monument Description and Remarks: FOUND P.K. NAIL IN CENTERLINE OF INDEPENDENCE AVE

### PLAN - VIEW

(Show a minimum of three reference ties to durable physical objects, relevant monuments and physical conditions that will enable recovery of the corner.)



X-NAILS  
POWER POLE

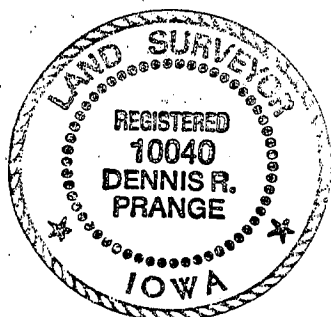


I hereby certify that the survey work was completed and this certificate was prepared by me or under my direct personal supervision and that I am a duly registered land surveyor under the laws of the state of Iowa.

Dennis R. Prange 1/6/1992

REGISTERED LAND SURVEYOR NO. 10040

SEAL



#### List Corners to be Indexed

Corners	Section	Twp	Range
S 1/4 COR	21	89 N	12 W.

MISC. BK. 299 p. 399

(Also see prev. Record N 1/4 28-89-12)