

501 SYCAMORE STREET STE 222  
WATERLOO, IOWA 50703

175  
P  
Z

Document Number: 2008009325  
Date: Oct 30, 2007 4:30:00 pm  
Aud Fee: 0.00 Rec Fee: 5.00  
Trans Tax: 0.00 Rec Management Fee: 1.00  
E-Com Fee: 1.00 Non-Standard Page Fee: 0.00  
Filed for record in Black Hawk County, Iowa  
Judith A. McCarthy, County Recorder

Recorded By: Michael R. Fagle, P.L.S. Earth Tech, 501 Sycamore St., Suite 222, Waterloo, Iowa 50703 I-319-232-6531

UNITED STATES PUBLIC LAND SURVEY CORNER CERTIFICATE  
OF

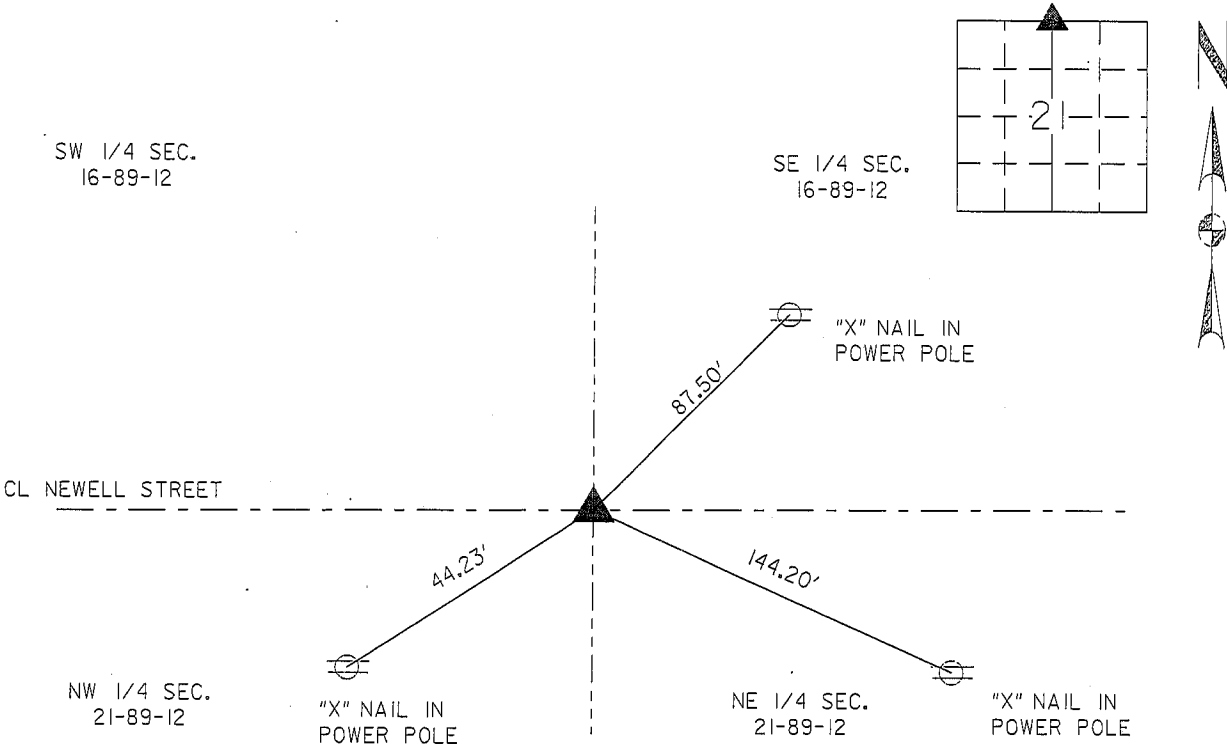
Land Survey Monuments situated in Section 21, Township 89 North, Range 12 West, of the Fifth Principal Meridian, Black Hawk County, Iowa. Previously recorded in Book 299 Page 403 in the Black Hawk County Recorder's Office. (Book, Page, Document Number, etc.)

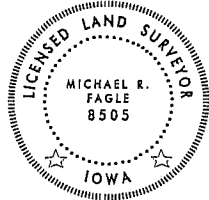
(Show reason for preparing this certificate, the evidence and detailed procedures used in establishing the corner positions and monumentation found or placed.)

Monument Description and Remarks: Set PK Nail with Washer from Record Ties.

PLAN - VIEW

(Show a minimum of three reference ties to durable physical objects, relevant monuments and physical conditions that will enable recovery of the corner.)



	I hereby certify that this Land Surveying document was prepared by me or under my direct personal supervision and that I am a duly Licensed Land Surveyor under the laws of the State of Iowa.			
	<u>Michael R. Fagle</u>		<u>10-30-07</u>	
	MICHAEL R. FAGLE		Date	
	License number 8505			
	My license renewal date is December 31, 2008			
Pages or sheets covered by this seal:				
<u>THIS SHEET</u>				
List Corners to be Indexed				
Corners	Section	Twp	Range	
North 1/4 Corner	21	T 89 N	R 12 W	