

File 2018-00000689

Land Survey Monuments situated in Section No. 21, Township No. 89 North,  
Range No. 12 West, of the Fifth Principal Meridian, Black Hawk County, Iowa  
Previously recorded in N/A

Monument Description and Remarks: Center East 1/16 Corner -- Section 21 - T89N - R12W

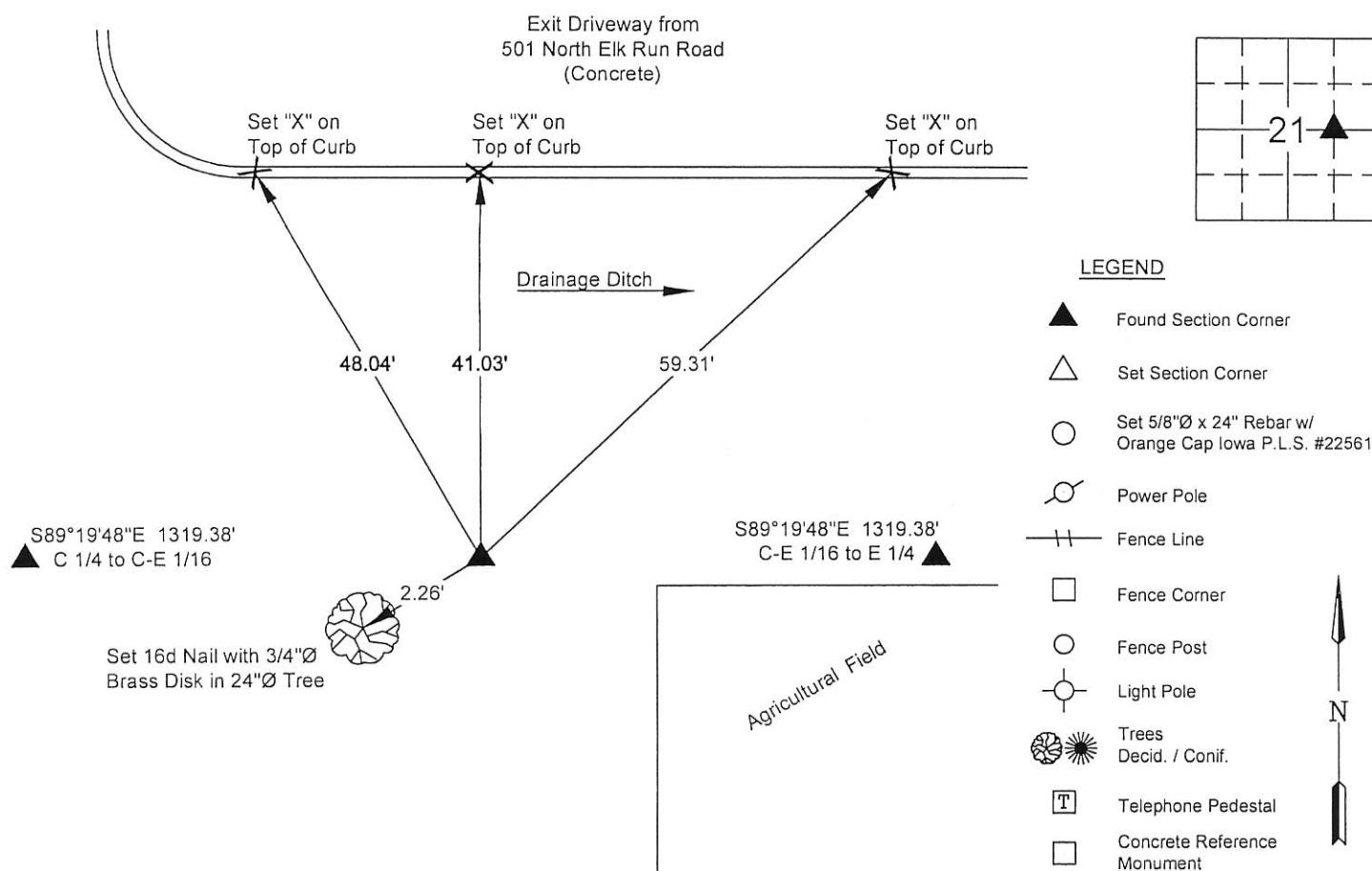
Searched area with locator and found a 1"Ø Pinched Pipe, Damaged and Bent,

Replaced with 5/8"Ø x 24" Rebar w/Orange Cap P.L.S. #22561, Equidistant between the Center 1/4 corner and the East 1/4 corner.


Corner was used for a survey in the NE 1/4, SE 1/4 of Section 21.

No previous corner certificate on file.

(Show a minimum of three reference ties to durable physical objects, relevant monuments and physical conditions that will enable recovery of the corner.)



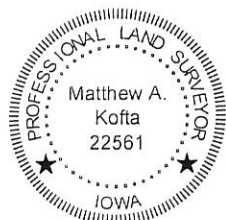
I hereby certify that this land surveying document was prepared and the related survey work was performed by me or under my direct personal supervision and that I am a duly licensed Land Surveyor under the laws of the State of Iowa.

  
Matthew A. Koffa, P.L.S. Date 6-28-1

License Number 22561  
My license renewal date is December 31, 2018  
Pages or sheets covered by this seal: \_\_\_\_\_

List Corner to be Indexed

Corner	Section	Twp	Range
Center East 1/16	21	89 North	12 West



\* VJ Engineering  
1501 Technology Parkway  
Cedar Falls, Iowa - 319-266-5829

Section Corner  
Reference Ties

file no.
178041
drawn by
MAK
date
6/22/17