

EARTH TECH

501 SYCAMORE ST STE 222

WATERLOO, IOWA 50703

I *RS*

P

Z

Document Number: 2008009326

Date: Oct 30, 2007 4:30:00 pm

Aud Fee: 0.00

Rec Fee: 5.00

Trans Tax: 0.00

Rec Management Fee: 1.00

E-Com Fee: 1.00

Non-Standard Page Fee: 0.00

Filed for record in Black Hawk County, Iowa
Judith A. McCarthy, County Recorder

Recorded By: Michael R. Fagle, P.L.S.

Earth Tech, 501 Sycamore St., Suite 222, Waterloo, Iowa 50703

I-319-232-6531

UNITED STATES PUBLIC LAND SURVEY CORNER CERTIFICATE OF

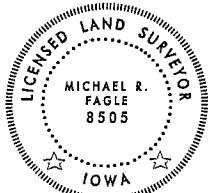
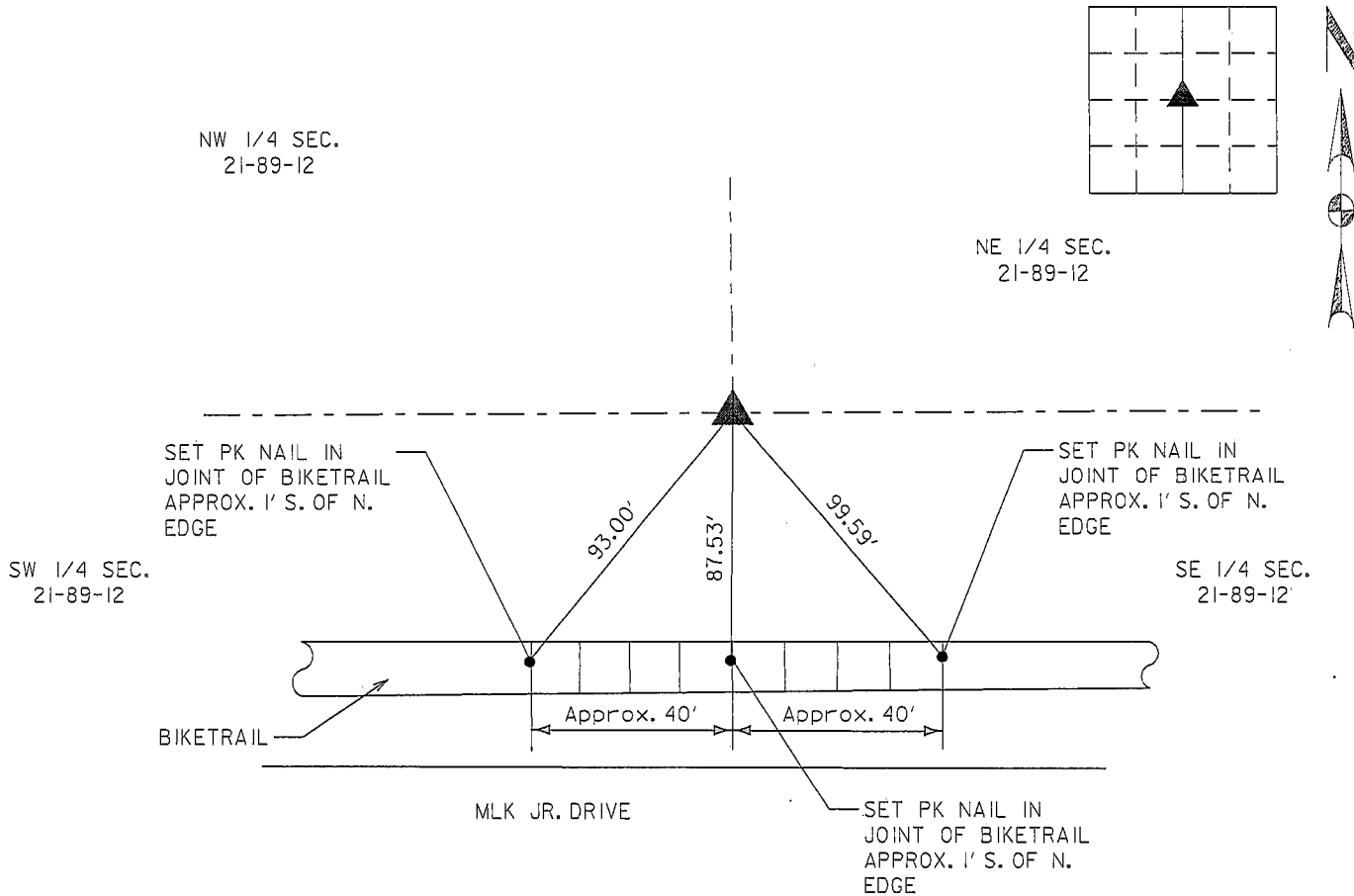
Land Survey Monuments situated in Section 21, Township 89 North,
Range 12 West, of the Fifth Principal Meridian, Black Hawk
County, Iowa. Previously recorded in Book 299 Page 405
in the Black Hawk County Recorder's Office. (Book, Page, Document Number, etc.)

(Show reason for preparing this certificate, the evidence and detailed procedures
used in establishing the corner positions and monumentation found or placed.)

Monument Description and Remarks: Found 1" Pinched Top Pipe from Previous Survey.

PLAN - VIEW

(Show a minimum of three reference ties to durable physical objects, relevant
monuments and physical conditions that will enable recovery of the corner.)



I hereby certify that this Land Surveying
document was prepared by me or under
my direct personal supervision and
that I am a duly Licensed Land Surveyor
under the laws of the State of Iowa.

Michael R. Fagle 10-30-07
MICHAEL R. FAGLE Date

License number 8505

My license renewal date is December 31, 2008

Pages or sheets covered by this seal:

THIS SHEET

List Corners to be Indexed

Corners	Section	Twp	Range
Center Section	21	T 89 N	R 12 W