



Doc ID: 005418200001 Type: GEN
Kind: CORNER
Recorded: 03/11/2014 at 08:39:20 AM
Fee Amt: \$7.00 Page 1 of 1
Black Hawk County Iowa
JUDITH A MCCARTHY RECORDER

File 2014-00016348

UNITED STATES PUBLIC LAND SURVEY CORNER CERTIFICATE
OF

Land Survey Monuments situated in Section 20, Township 89 N, Range 12 W, of the Fifth Principal Meridian, Black Hawk County, Iowa
Previously recorded in Book Misc. 300, Page 353.

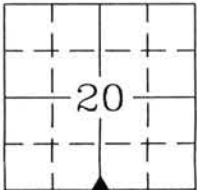
Show reason for preparing this certificate, the evidence and detailed procedures used in establishing the corner positions and monumentation found or placed.)

Monument Description and Remarks: South Quarter Corner 20-89N-12W

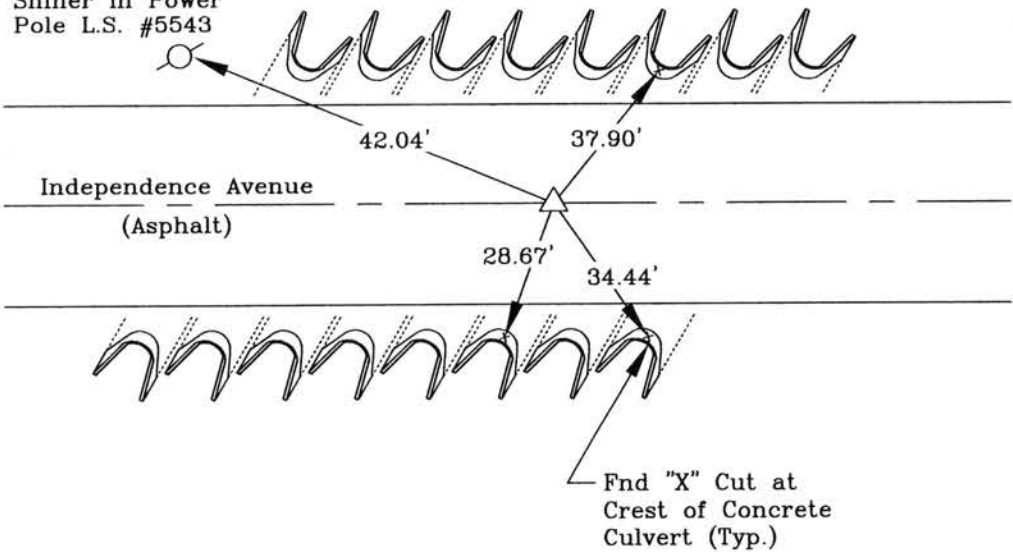
Corner was used for a survey in the SW 1/4 and SE 1/4 of Section 20-89-12. Previous corner certificate calls for a PK nail at corner, searched area visually and with locator, did not find PK nail. Re-established corner location from reference tie information and set a MAG nail in the asphalt pavement. This certificate is being prepared due to a change in the monumentation of the corner.

PLAN - VIEW

(Show a minimum of three reference ties to durable physical objects, relevant monuments and physical conditions recovery of the corner.)



Found Survey
Shiner in Power
Pole L.S. #5543



I hereby certify that this land surveying document was prepared and the related survey work was performed by me or under my direct personal supervision and that I am a duly licensed Land Surveyor under the laws of the State of Iowa.



Wendell J. Lupkes 3-7-2014
WENDELL J. LUPKES, L.S. DATE
License number 12088
My license renewal date is December 31, 2014
Pages or sheets covered by this seal: 1

List Corner to be Indexed

Corner	Section	Twp	Range
South 1/4	20	89 N	12 W



VJ Engineering
1501 Technology Parkway
Cedar Falls, Iowa - 319-266-5829

SECTION CORNER
REFERENCE TIES

scale
NONE
drawn by
MAK
date
3/3/14