

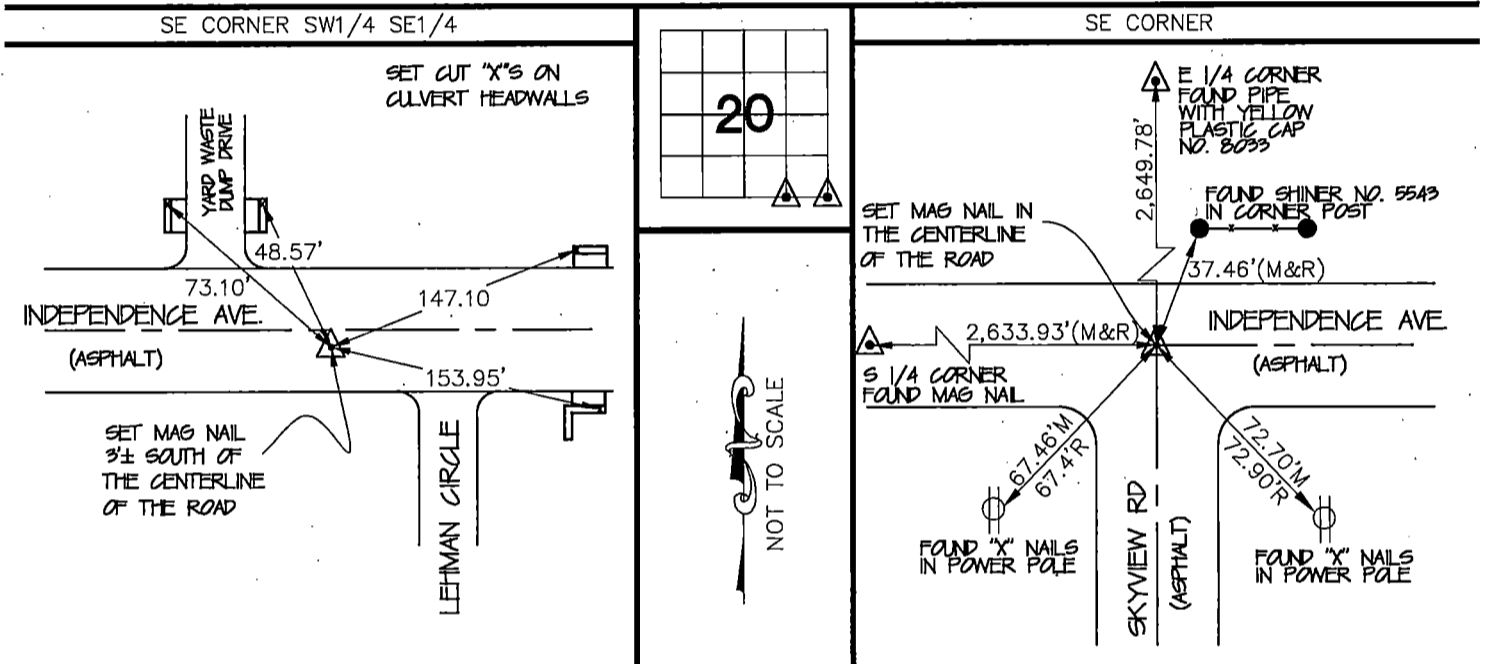
—PREPARED BY AND RETURN TO: MMS CONSULTANTS, INC. 1917 S. GILBERT ST. IOWA CITY, IOWA 52240 (319)351-8282—

U.S. PUBLIC LAND SURVEY CORNER CERTIFICATE
FOR LAND SURVEY MONUMENTS SITUATED IN SECTION 20, TOWNSHIP 89 NORTH, RANGE 12 WEST, OF
THE FIFTH PRINCIPAL MERIDIAN, BLACKHAWK COUNTY, IOWA

REASON FOR PREPARING CERTIFICATE:

- ☒ A) THERE IS NO CERTIFICATE FOR THE CORNER ON FILE WITH THE RECORDER OF THE COUNTY IN WHICH THE CORNER IS LOCATED.
☐ B) CORNER FOUND, OR ITS POSITION, DIFFERS FROM PREVIOUSLY RECORDED CERTIFICATE RECORDED IN BOOK XX , AT PAGE XX .
☒ C) THE CORNER MONUMENT WAS REPLACED OR MODIFIED.
☐ D) THE REFERENCE TIES REFERRED TO IN AN EXISTING PUBLIC RECORD ARE NOT CORRECT.

RECOVERY TIE DRAWING



MONUMENT DESCRIPTION AND REMARKS :

SET MAG NAIL APPROXIMATELY 3 FEET SOUTH OF THE CENTERLINE OF INDEPENDENCE AVENUE. TIED OUT AS SHOWN ABOVE. THE CORNER WAS SET ON THE MID POINT BETWEEN THE SE CORNER AND THE S 1/4 CORNER OF SECTION 20-T89N-R12W THE 5TH P.M., WATERLOO, BLACK HAWK COUNTY, IOWA

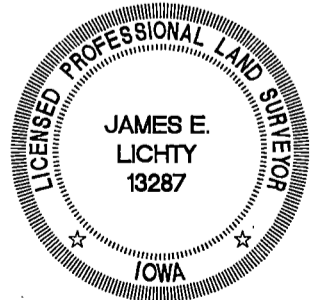
MONUMENT DESCRIPTION AND REMARKS :

SET MAG NAIL IN THE CENTERLINE OF INDEPENDENCE AVENUE. TIED OUT AS SHOWN ABOVE. THE CORNER WAS RESET FROM A LAND CORNER CERTIFICATE BY DENNIS PRANGE IN 1992, THAT WAS PREVIOUSLY RECORDED IN MISC. BOOK 299, PAGE 389 IN THE RECORDS OF THE BLACK HAWK COUNTY RECORDER'S OFFICE, WATERLOO, BLACK HAWK COUNTY, IOWA

I hereby certify that this land surveying document was prepared and the related survey work was performed by me or under my direct personal supervision and that I am a duly licensed Professional Land Surveyor under the laws of the State of Iowa.

JAMES E. LICHTY
P.L.S. Iowa Lic. No. 13287

My license renewal date is December 31, 2020.



Drawn by: JEL
Scale: NOT TO SCALE
Checked by: RRN
Date: 03/15/20
Field Book: 1280
Project No: 10645-004

U.S. PUBLIC LAND SURVEY CORNER CERTIFICATE
SEC.20-T89N-R12W
CITY OF WATERLOO, IOWA
(NORTHEAST INDUSTRIAL PARK-PART 5)

MMS CONSULTANTS, INC.
IOWA CITY, IOWA 52240
(319) 351-8282
www.mmsconsultants.net



Date: Revision: