



Doc ID: 005418190001 Type: GEN
Kind: CORNER
Recorded: 03/11/2014 at 08:38:29 AM
Fee Amt: \$7.00 Page 1 of 1
Black Hawk County Iowa
JUDITH A MCCARTHY RECORDER

File 2014-00016347

UNITED STATES PUBLIC LAND SURVEY CORNER CERTIFICATE
OF

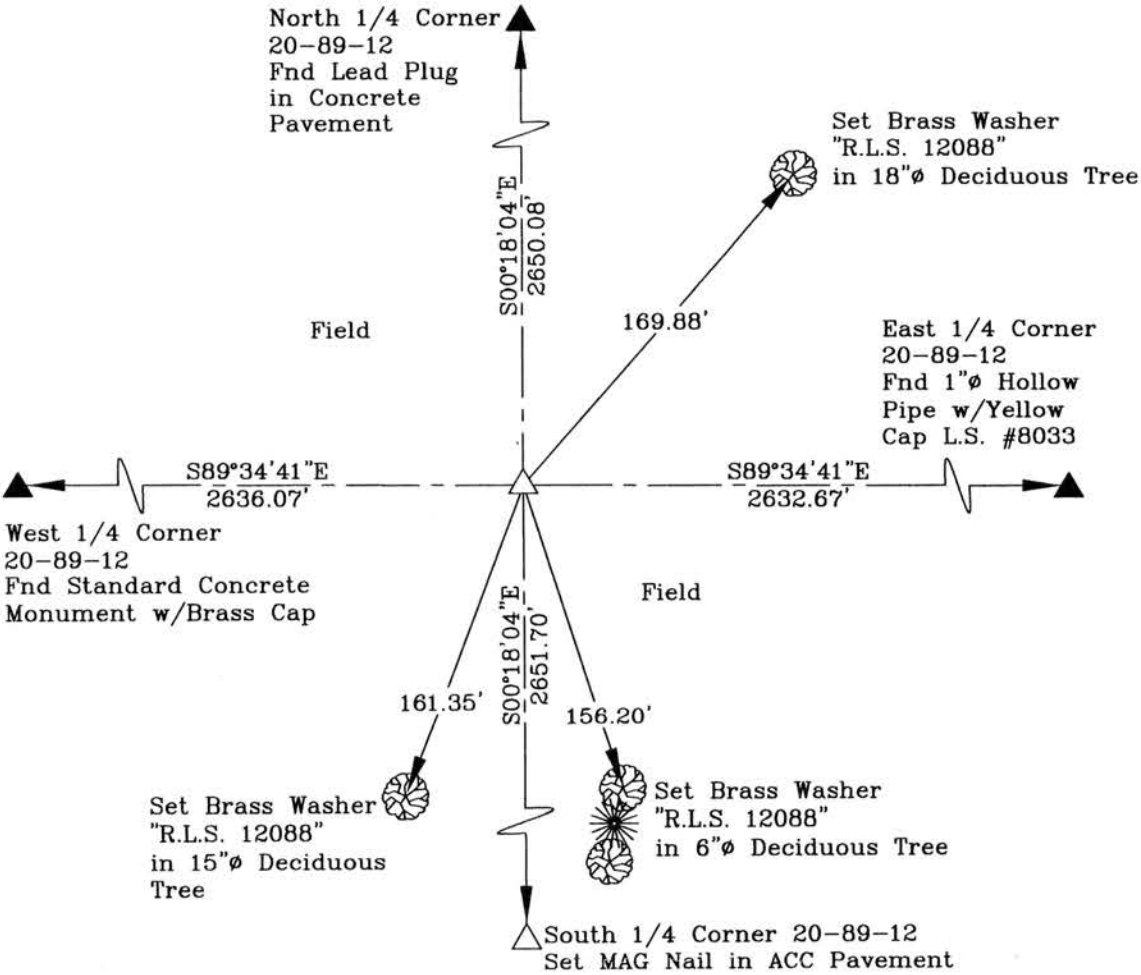
Land Survey Monuments situated in Section 20, Township 89 N, Range 12 W, of the Fifth Principal Meridian, Black Hawk County, Iowa
Previously recorded in Book N/A, Page .

Show reason for preparing this certificate, the evidence and detailed procedures used in establishing the corner positions and monumentation found or placed.)

Monument Description and Remarks: Center of Section 20-89N-12W
Plat of Survey recorded at Doc. #2005 18598 shows corner location, searched area with locator and did not find monument. Set 5/8"Ø x 24" rebar w/Red Cap L.S. #12088 at intersection of quarter lines. Corner was used for a survey in SW 1/4 and SE 1/4 of section.
No previous corner certificate recorded.

PLAN - VIEW

(Show a minimum of three reference ties to durable physical objects, relevant monuments and physical conditions recovery of the corner.)



I hereby certify that this land surveying document was prepared and the related survey work was performed by me or under my direct personal supervision and that I am a duly licensed Land Surveyor under the laws of the State of Iowa.



Wendell J. Lupkes 3-7-2014
WENDELL J. LUPKES, L.S. DATE
License number 12088
My license renewal date is December 31, 2014
Pages or sheets covered by this seal: ()

List Corner to be Indexed

Corner	Section	Twp	Range
Center	20	89 N	12 W



env

VJ Engineering
1501 Technology Parkway
Cedar Falls, Iowa - 319-266-5829

SECTION CORNER
REFERENCE TIES

scale
NONE
drawn by
MAK
date
3/3/14

14.000m (7.00) 1