

Index Legend	
County:	Black Hawk
Section(s):	19 Township: 89 N Range: 12 W
Corner(s):	Northwest Corner
Requestor:	City of Waterloo
Proprietor:	City of Waterloo
Surveyor:	William W. Castle
Surveyor Company:	City of Waterloo Engineering Department 715 Mulberry Street, Waterloo, IA 50703
Return To:	715 Mulberry St, Waterloo, IA 50703 291-4312


Doc ID: 012057000001 Type: GEN
Recorded: 01/03/2024 at 04:09:17 PM
Fee Amt: \$7.00 Page 1 of 1
Black Hawk County Iowa
SANDIE L. SMITH RECORDER
File **2024-00008559**

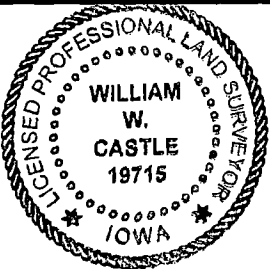
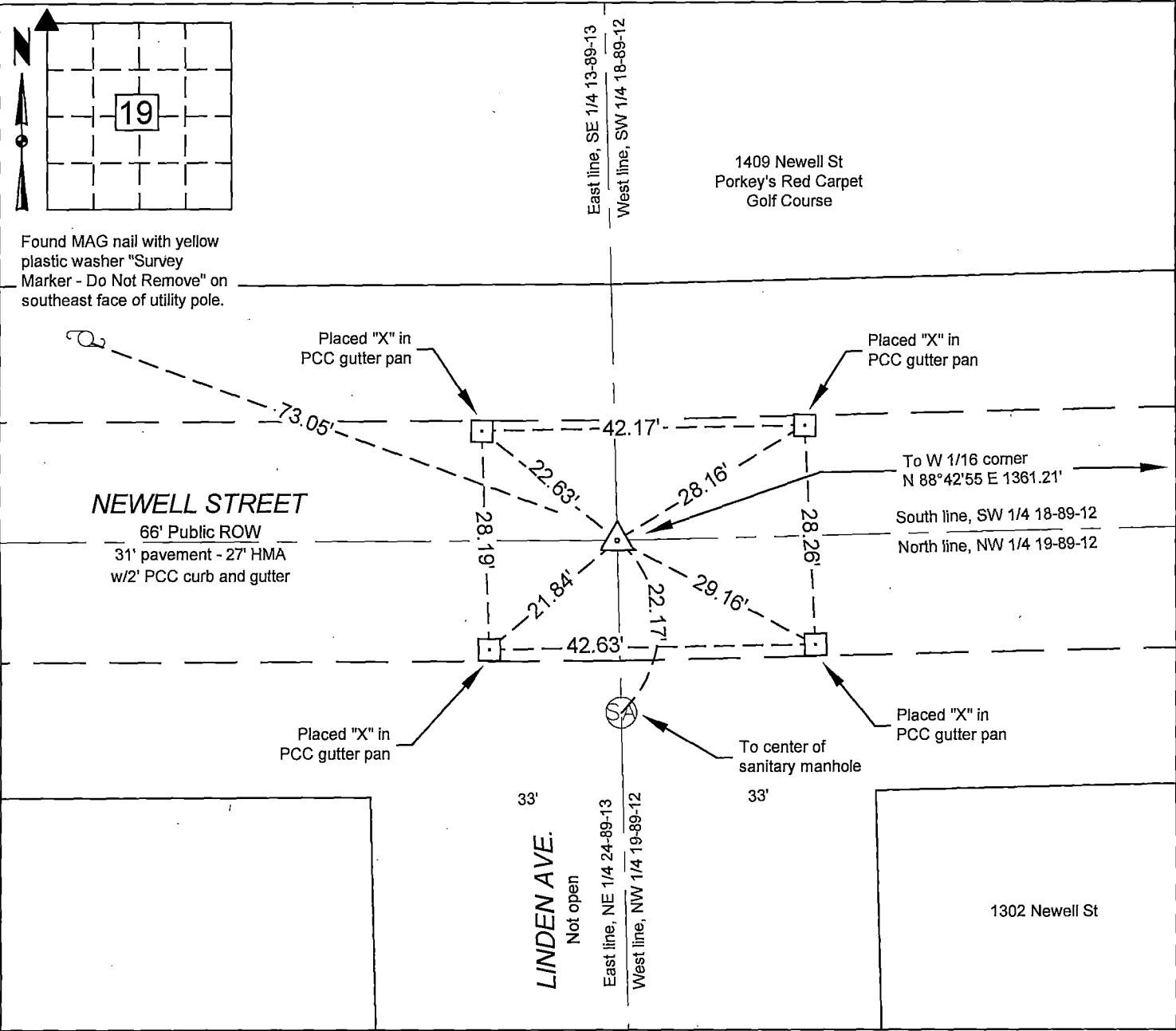
United States Public Land Survey Corner Certificate

Land Survey Monument situated in Section 19, Township 89 North, Range 12 West, of the Fifth Principal Meridian, Black Hawk County, Iowa.
Previously recorded in Doc. No. 2007-12980 in the Black Hawk County Recorder's Office.

Reason for preparing this certificate, the evidence and detailed procedures used in establishing the corner position, and monumentation found or placed.
Pavement overlain as part of the City of Waterloo's FY2023 Asphalt Overlay Program, Contract No. 1073. Prior to construction, found ~1" diameter hole in HMA pavement that fit ties shown on previous corner certificate. Measurements from this hole to other corners as shown on survey filed as Doc. No. 2007-12978 confirm this was the location of the monument per 2007-12980. After construction, placed a 3-inch survey nail in HMA at the corner using project controls.

PLAN VIEW

Show a minimum of three reference ties to durable physical objects, relevant monuments and physical conditions that will enable recovery of the corner.



I hereby certify that this surveying document was prepared and the related survey work was performed by me or under my direct personal supervision and that I am a duly licensed Land Surveyor under the laws of the State of Iowa.
William W. Castle 12/12/2023
William W. Castle, PLS Date
License Number 19715
My License Renewal Date is December 31, 2023.
Pages or sheets covered by this seal: 1/1

List corners to be indexed			
Corners	Section	Twp	Range
NW	19	89	12