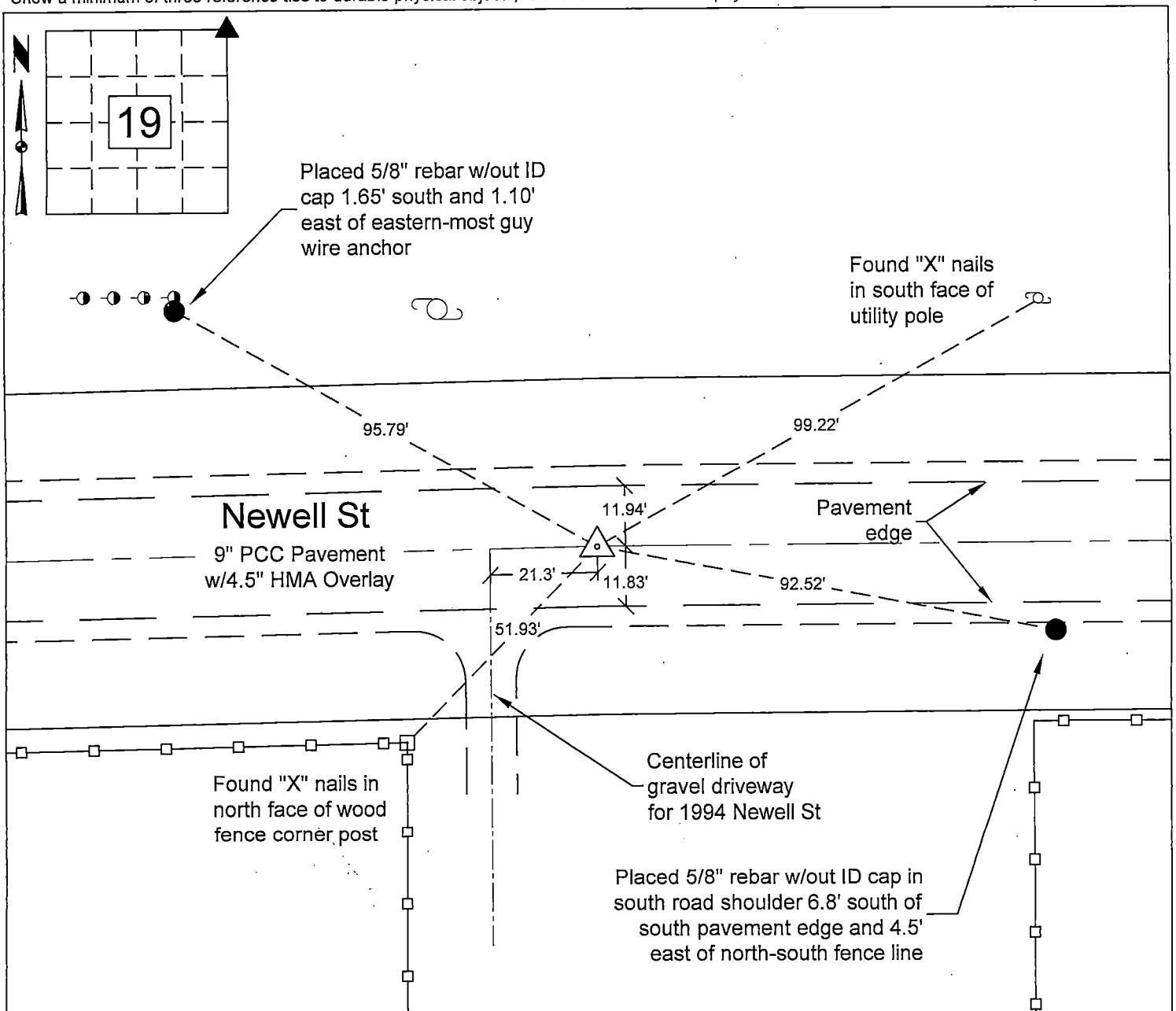


Doc ID: 010044370001 Type: GEN
Recorded: 01/08/2021 at 11:58:53 AM
Fee Amt: \$7.00 Page 1 of 1
Black Hawk County Iowa
SANDIE L. SMITH RECORDER
File 2021-00014345

Reason for preparing this certificate, the evidence and detailed procedures used in establishing the corner position, and monumentation found or placed. Existing pavement overlain with 4.5" of asphalt as part of City of Waterloo FY2020 Asphalt Overlay Program, Contract No. 992. Prior to construction, found lead plug in centerline joint of concrete pavement. Utility pole to the northwest of the corner used for reference had been removed. After construction, set 3" mag spike at corner using project controls.

PLAN VIEW

Show a minimum of three reference ties to durable physical objects, relevant monuments and physical conditions that will enable recovery of the corner.



I hereby certify that this surveying document was prepared and the related survey work was performed by me or under my direct personal supervision and that I am a duly licensed Land Surveyor under the laws of the State of Iowa.

William W. Castle, PLS
 License Number 19715
 My License Renewal Date is December 31, 2019.
 Pages or sheets covered by this seal : 11

List corners to be indexed

| | | | |
|---------|---------|-----|-------|
| Corners | Section | Twp | Range |
| NE | 19 | 89 | 12 |

City of Waterloo Engineering Department
715 Mulberry Street, Waterloo, Iowa 50703
Phone: (319) 291-4312 Fax: (319) 291-4262

Drawn By: WWC Scale: 1" = 30'
Field Work Date: 8/10/20 & 12/17/20
Date Drawn: 12/9/20 Plot Number: 201

Sheet No.

1 of 1

2/21/20
File Number: 2021-00014345 Seq: 1