

File **2022-00023418**

UNITED STATES PUBLIC LAND SURVEY CORNER CERTIFICATE OF

PREVIOUSLY RECORDED IN FILE 2017-00019665

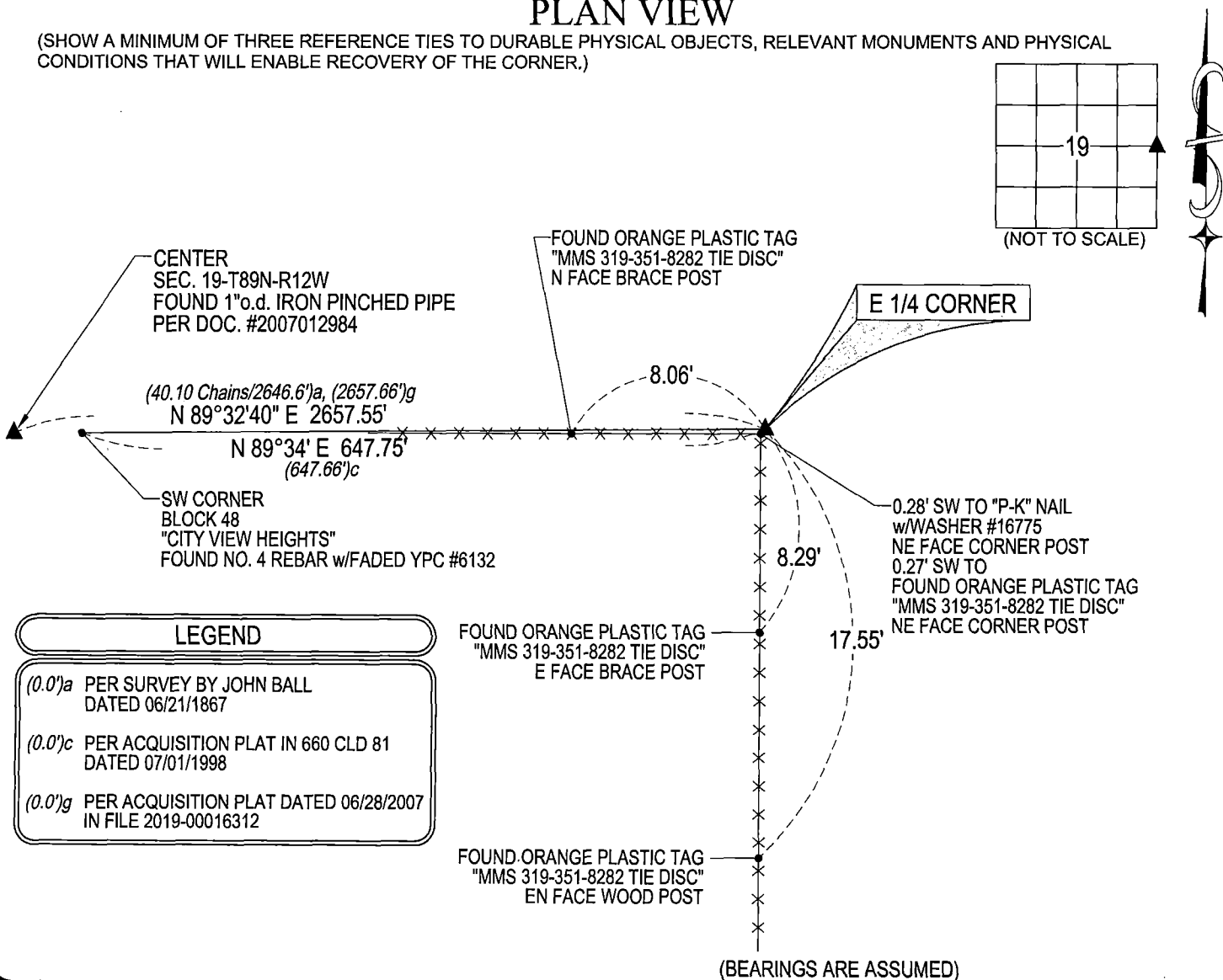
MONUMENT DESCRIPTION AND REMARKS:

NO LONGER THREE REFERENCE TIES. SURVEY COMPLETED IN THE SE 1/4 OF SEC. 19-T89N-R12W.

→ **E 1/4 CORNER:** USPLSCC DATED 02/06/1996 IN MISC. BOOK 319 PAGE 540 CALLS FOR [FOUND CONCRETE MONUMENT WITH BRASS CAP 18" DEEP. SET TWO IRON PINS (ONE ON EACH SIDE OF MONUMENT), ALSO SET STEEL FENCE WITH ORANGE PLASTIC CASING 0.50 FEET EAST OF MONUMENT]. USPLSCC DATED 05/09/2017 IN FILE 2017-00019665 CALLS FOR [FOUND S.C.M. WITH BRASS CAP AS PER ABOVE SECTION CORNER CERTIFICATE (MISC. BOOK 319 PAGE 540)]. FOUND STANDARD CONCRETE MONUMENT w/BRASS CAP (0.8'± DEEP) AND UTILIZED AS CORNER.

PLAN VIEW

(SHOW A MINIMUM OF THREE REFERENCE TIES TO DURABLE PHYSICAL OBJECTS, RELEVANT MONUMENTS AND PHYSICAL CONDITIONS THAT WILL ENABLE RECOVERY OF THE CORNER.)

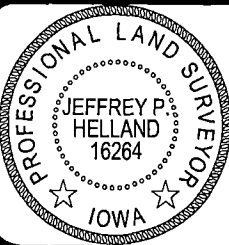


(BEARINGS ARE ASSUMED)



HELLAND ENGINEERING & SURVEYING, LTD.
6109 Chancellor Drive
Cedar Falls, Iowa 50613-6916
(319)-266-0161

BRASS TAG = 4d. NAIL & 13/16"Ø BRASS TAG DRAWN BY: JPH
SHINER = 1"Ø STEEL SHINER w/MASONRY NAIL
OPC = PLASTIC CAP (O=ORANGE, R=RED, Y=YELLOW)
(00') RECORDED AS FILE NAME: 22-148-22.DWG



I hereby certify that this land surveying document was prepared and the related survey work was performed by me or under my direct personal supervision and that I am a duly licensed Professional Land Surveyor under the laws of the State of Iowa.

Jeffrey P. Helland 5/13/2022
Jeffrey P. Helland
License Number 16264
My license renewal date is December 31, 2023.
All pages or sheets are covered by this seal except:

LIST CORNERS TO BE INDEXED			
CORNER	SECTION	TOWNSHIP	RANGE
E 1/4 CORNER	19	89N	12W
W 1/4 CORNER	20	89N	12W