

I
P
Z

Document Number: 2007012983

Date: Dec 08, 2006 12:50:48 pm

Aud Fee: 0.00 Rec Fee: 5.00

Trans Tax: 0.00 Rec Management Fee: 1.00

E-Com Fee: 1.00 Non-Standard Page Fee: 0.00

Filed for record in Black Hawk County, Iowa
Patricia S. Sass, County Recorder

Kirk D. Eschliman, P.L.S. Iowa Lic. No. 9961, 723 Broadway Street, Waterloo, Iowa 50703 - Phone: 319-234-0509

UNITED STATES PUBLIC LAND SURVEY CORNER CERTIFICATE
OFLAND SURVEY MONUMENTS SITUATED IN SECTION NINETEEN (19), TOWNSHIP EIGHT-NINE (89) NORTH
RANGE TWELVE (12) WEST, OF THE FIFTH PRINCIPAL MERIDIAN, BLACK HAWK COUNTY, IOWA.
PREVIOUSLY RECORDED IN (NOT PREVIOUSLY RECORDED) (BOOK, PAGE, DOCUMENT NUMBER, ETC.) IN THE COUNTY RECORDER'S OFFICE.

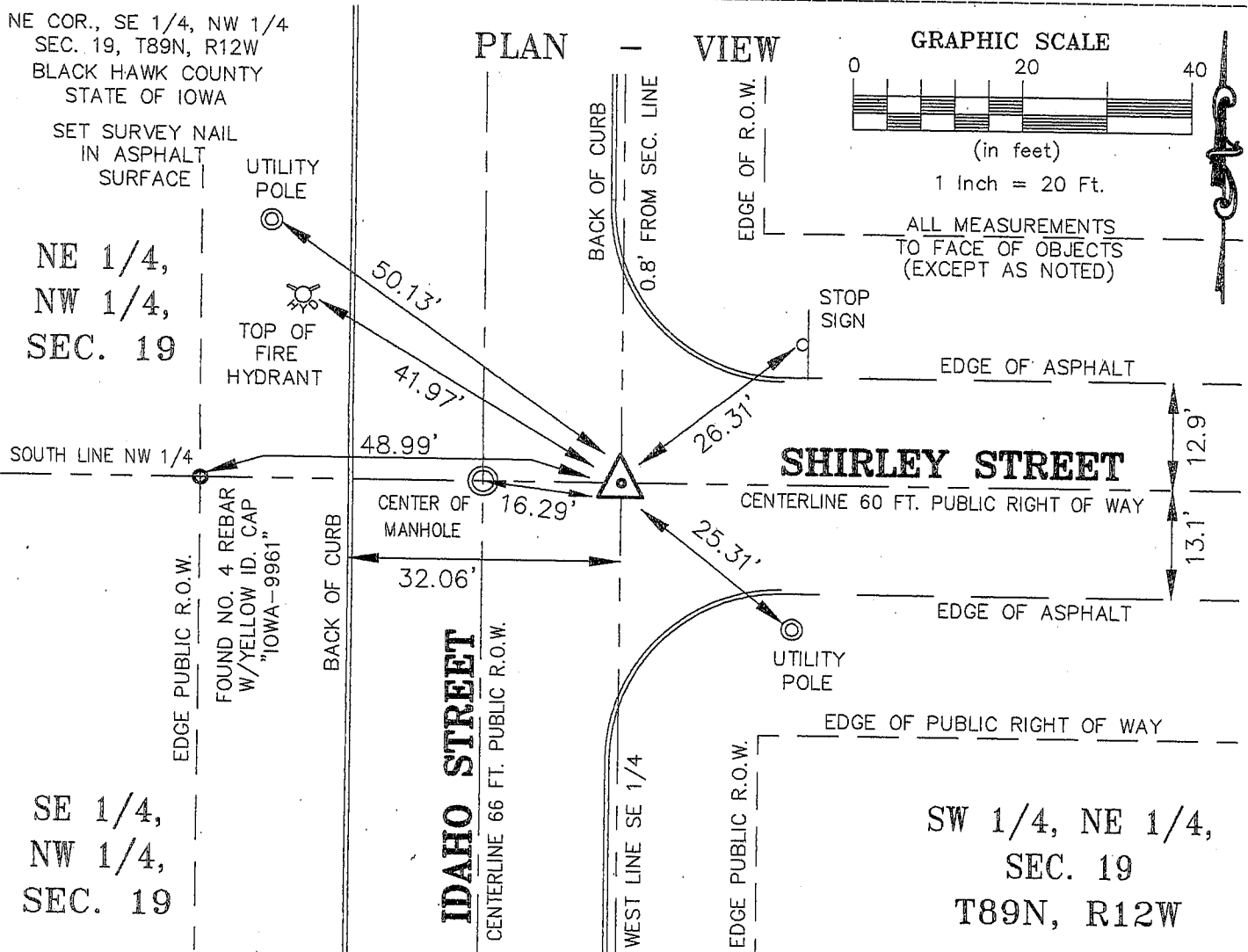
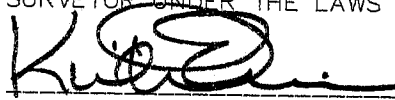
(SHOW REASON FOR PREPARING THIS CERTIFICATE, THE EVIDENCE AND DETAILED PROCEDURES USED IN ESTABLISHING THE CORNER POSITIONS AND MONUMENTATION FOUND OR PLACED.)

MONUMENT DESCRIPTION AND REMARKS:

CURRENT SECTION CORNER CERTIFICATE NOT ON FILE IN THE BLACK HAWK COUNTY RECORDER'S OFFICE.

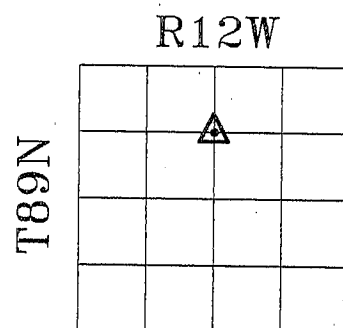
MONUMENT SET BASED ON SURROUNDING MONUMENTATION AND RECORDED SURVEY NOTES.

SET SURVEY NAIL IN ASPHALT SURFACE OF SHIRLEY STREET. MONUMENT USED IN REFERENCED FIELD SURVEY.

I HEREBY CERTIFY THAT THIS LAND SURVEYING DOCUMENT
WAS PREPARED AND RELATED SURVEY WORK WAS
PERFORMED BY ME OR UNDER MY DIRECT PERSONAL
SUPERVISION AND THAT I AM A DULY LICENSED LAND
SURVEYOR UNDER THE LAWS OF THE STATE OF IOWA. DATE: 11/30/2006KIRK D. ESCHLIMAN, P.L.S. IOWA LIC. NO. 9961
MY LICENSE RENEWAL DATE IS DECEMBER 31, 2007
PAGES OR SHEETS COVERED BY THIS SIGNATURE & SEAL: SHEET 1 OF 1FOR: SHARPE JONES, MARIE PHILLIPS & WENDELL ERVIN
UNASSIGNED ADDRESS ON IDAHO ST.
WATERLOO, IOWA 50703REQ. BY: TERRY PHILLIPS
WATERLOO, IOWAKESS & ASSOCIATES, INC.
PROFESSIONAL LAND SURVEYORS : 723 BROADWAY, WATERLOO, IOWA 50703-5811
DATE: 11/30/2006 C.A.D.D. FILE: 06B99SCC5.DWG PROJECT NO.: 06B99

List of corners to be indexed:

Corner	Section	Township	Range
NE COR., SE 1/4, NW 1/4	19	T89N	R12W



SECTION 19