

INS
P
Z

Document Number: 2007012984
Date: Dec 08, 2006 12:51:26 pm
Aud Fee: 0.00 Rec Fee: 5.00
Trans Tax: 0.00 Rec Management Fee: 1.00
E-Com Fee: 1.00 Non-Standard Page Fee: 0.00
Filed for record in Black Hawk County, Iowa
Patricia S. Sass, County Recorder

Kirk D. Eschliman, P.L.S. Iowa Lic. No. 9961, 723 Broadway Street, Waterloo, Iowa 50703 - Phone: 319-234-0509

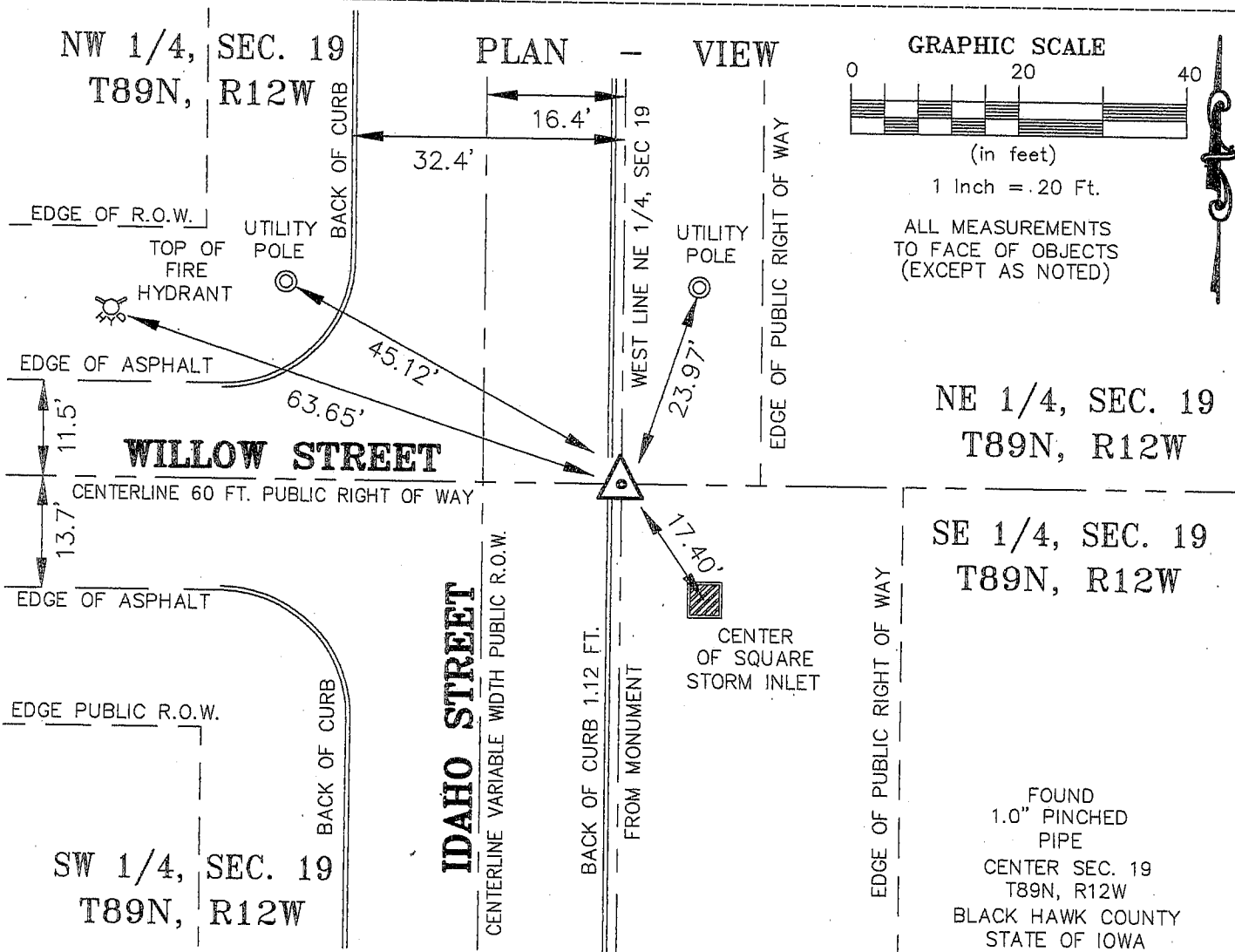
UNITED STATES PUBLIC LAND SURVEY CORNER CERTIFICATE OF

LAND SURVEY MONUMENTS SITUATED IN SECTION NINETEEN (19), TOWNSHIP EIGHT-NINE (89) NORTH
RANGE TWELVE (12) WEST, OF THE FIFTH PRINCIPAL MERIDIAN, BLACK HAWK COUNTY, IOWA.
PREVIOUSLY RECORDED IN MISC. BOOK 299, PAGE 379 (BOOK, PAGE, DOCUMENT NUMBER, ETC.) IN THE COUNTY RECORDER'S OFFICE.

(SHOW REASON FOR PREPARING THIS CERTIFICATE, THE EVIDENCE AND DETAILED PROCEDURES USED IN ESTABLISHING THE CORNER POSITIONS AND MONUMENTATION FOUND OR PLACED.)

MONUMENT DESCRIPTION AND REMARKS:

PREVIOUS SECTION CORNER CERTIFICATE ON FILE IN THE BLACK HAWK COUNTY RECORDER'S OFFICE, IN
MISC. BOOK 299, PAGE 379, DATED JANUARY 6, 1992, BY DENNIS R. PRANGE. MONUMENT RETIED AS UPDATE
TO PREVIOUS CERTIFICATE. FOUND 1.0 INCH PINCHED PIPE, 0.4 FEET BELOW SURFACE OF GROUND.
MONUMENT USED IN REFERENCED FIELD SURVEY.



I HEREBY CERTIFY THAT THIS LAND SURVEYING DOCUMENT WAS PREPARED AND RELATED SURVEY WORK WAS PERFORMED BY ME OR UNDER MY DIRECT PERSONAL SUPERVISION AND THAT I AM A DULY LICENSED LAND SURVEYOR UNDER THE LAWS OF THE STATE OF IOWA.

Kirk D. Eschliman DATE: 11/30/2006
KIRK D. ESCHLIMAN, P.L.S. IOWA LIC. NO. 9961
MY LICENSE RENEWAL DATE IS DECEMBER 31, 2007
PAGES OR SHEETS COVERED BY THIS SIGNATURE & SEAL: SHEET 1 OF 1

FOR: SHARPE JONES, MARIE PHILLIPS & WENDELL ERVIN
UNASSIGNED ADDRESS ON IDAHO ST.
WATERLOO, IOWA 50703

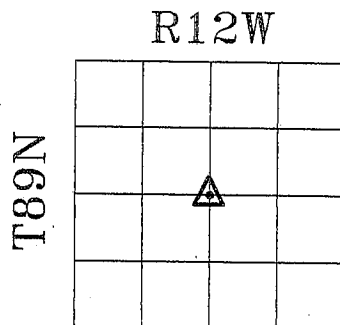
REQ. BY: TERRY PHILLIPS
WATERLOO, IOWA



KESS & ASSOCIATES, INC.
PROFESSIONAL LAND SURVEYORS - 723 BROADWAY, WATERLOO, IOWA 50703-5811
DATE: 11/30/2006 C.A.D.D. FILE: 06B99SCC4.DWG PROJECT NO.: 06B99

List of corners to be indexed:

Corner	Section	Township	Range
CENTER	19	T89N	R12W



SECTION 19