

BLACK HAWK COUNTY IOWA, SS:
Filed for record AUG 16, 2001 at
11:00 AM. and recorded in Book 343
of MISC at Page 581

MISC
SC
INDEX *Sf*
MARGIN
PROOF *om*
COMPARE *le*

of _____ MISC _____ at Page _____ 58
Patricia A. Lass Recorder
 FEE _____ N/C _____
 BLACK HAWK COUNTY ENGINEER

PREPARED BY: BLACK HAWK COUNTY ENGINEERS OFFICE
316 E. FIFTH STREET, ROOM 211 WATERLOO, IOWA 50703

PH.# (319) 833-3008
FAX.# (319) 833-3139

SLSI	9-94
CERT	12-96

UNITED STATES PUBLIC LAND SURVEY CORNER CERTIFICATE OF

Land Survey Monuments situated in Section 18 , Township 89 N ,
Range 12 W , of the Fifth Principal Meridian, BLACK HAWK County, Iowa.
Previously recorded in Misc. Book N/A , Page N/A , in County Recorder's Office.

(Show reason for preparing this certificate, the evidence and detailed procedures used in establishing the corner positions and monumentation found or placed.)

Monument Description and Remarks: RE-EST. DUE TO ACC RESURFACING PROJECT. FOUND 1/2" PIN IN PCC PAVEMENT PRIOR TO RESURFACING.

REF. AS DENOTED BELOW, AND RESET CORNER WITH 6' L. x 5/8' RBR.
W/ 2" ALUM. CAP AFTER ACC RESURFACING.

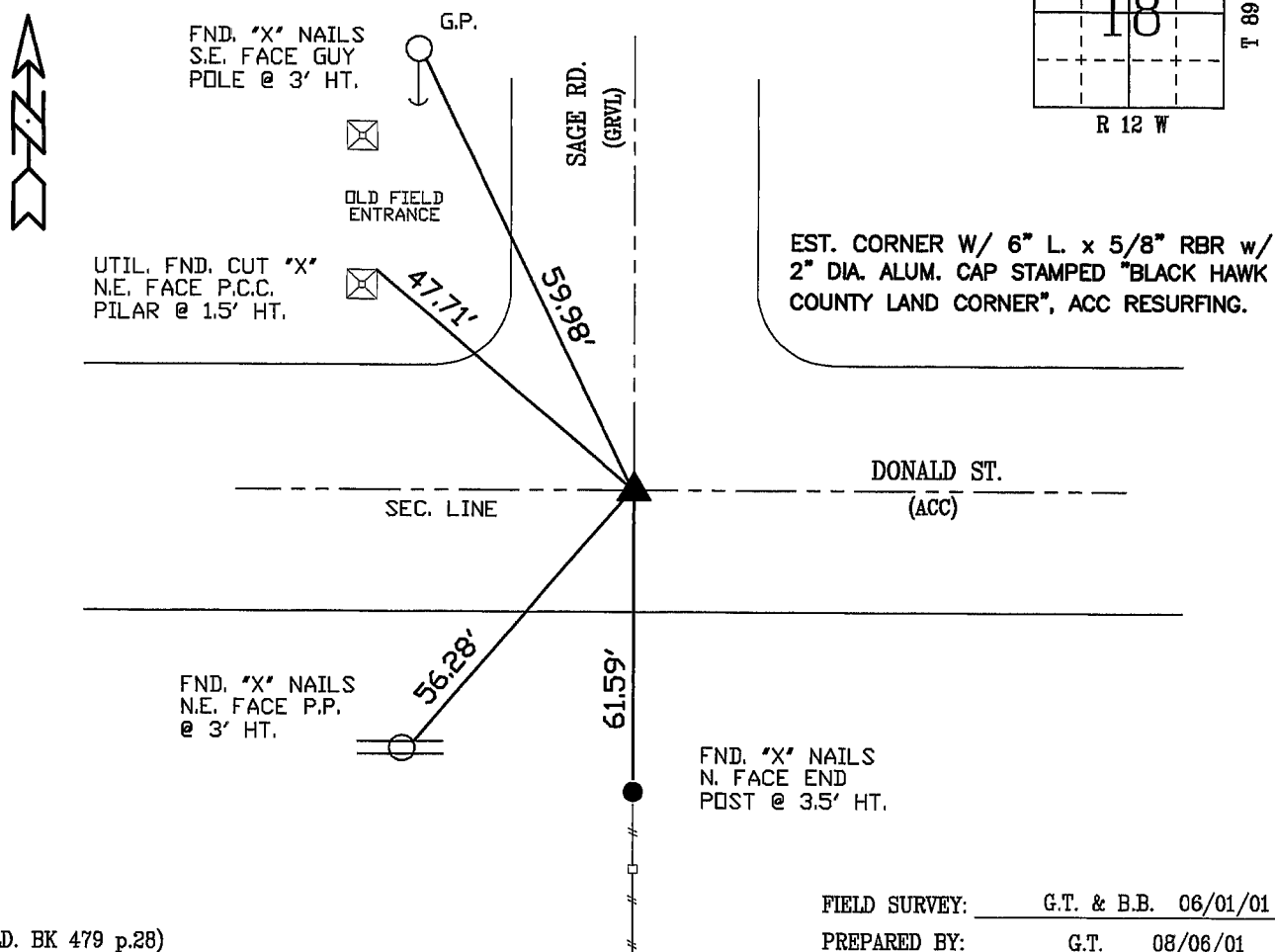
PLAN - VIEW

(Show a minimum of three reference ties to durable physical objects, relevant monuments and physical conditions that will enable recovery of the corner.)

NOTE:

ALL DISTANCES PLUMB

NOT TO SCALE

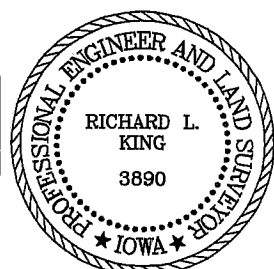


(FLD. BK 479 p.28)

FIELD SURVEY: G.T. & B.B. 06/01/01

PREPARED BY: G.T. 08/06/01

CERTIFICATION



I hereby certify that this land surveying document was prepared and the related survey work was performed by me or under my direct personal supervision and that I am a duly licensed Land Surveyor under the laws of the State of Iowa.

Richard L. King 9/13/01
Richard L. King (date)

License Number 3890

My license renewal date is December 31, 2001

Pages or sheets covered by this seal:

This Land Corner Certificate Only.

LIST CORNERS TO BE INDEXED

Corner Section - Township - Range

N.E. 18 89 N 12 W

N.W. 17 89 N 12 W

S.E. 7 89 N 12 W

S.W. 8 89 N 12 W