



Doc ID: 008257820001 Type: GEN
Recorded: 10/23/2017 at 10:02:36 AM
Fee Amt: \$7.00 Page 1 of 1
Black Hawk County Iowa
SANDIE L. SMITH RECORDER

File 2018-00007098

Reserved for County Recorder's use.

Kyle J. Helland, 1107 Technology Parkway, Cedar Falls, Iowa 50613-6951, (319)-266-0161

UNITED STATES PUBLIC LAND SURVEY CORNER CERTIFICATE OF

LAND SURVEY MONUMENTS SITUATED IN SECTION NO. 18, TOWNSHIP NO. 89 NORTH, RANGE
NO. 12 WEST OF THE FIFTH PRINCIPAL MERIDIAN, BLACK HAWK COUNTY, IOWA.

PREVIOUSLY RECORDED IN N/A.

(SHOW REASON FOR PREPARING THIS CERTIFICATE, THE EVIDENCE AND DETAILED PROCEDURES USED IN ESTABLISHING THE
CORNER POSITIONS AND MONUMENTATION FOUND OR PLACED.)

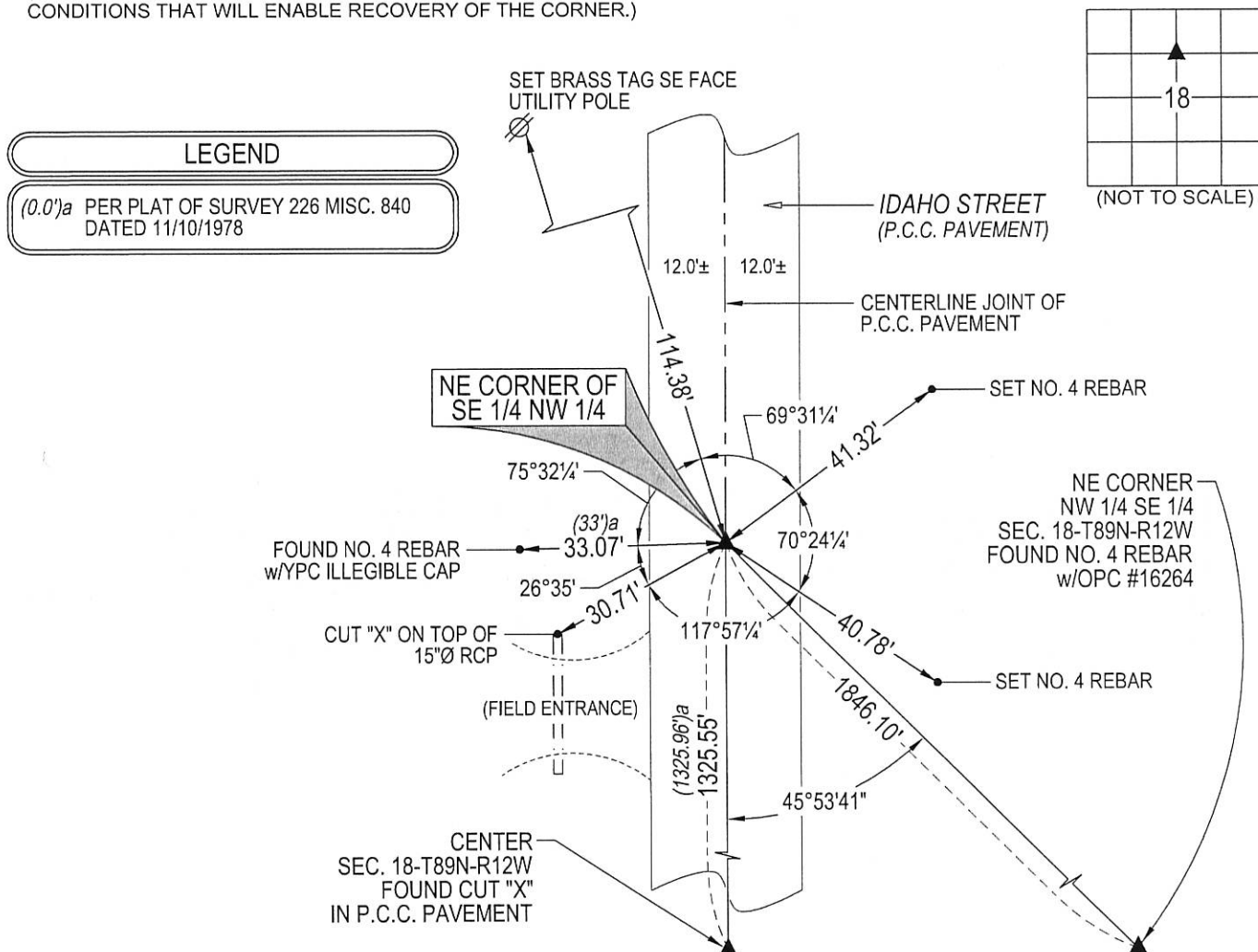
MONUMENT DESCRIPTION AND REMARKS:

NO USPLSCC ON FILE. SURVEY COMPLETED IN THE SW 1/4 NE 1/4 OF SEC. 18-T89N-R12W.

→ **NE CORNER OF NW 1/4 SE 1/4:** NO COUNTY ENGINEER REFERENCE TIES AVAILABLE. PLAT OF SURVEY 226
MISC. 840 DATED 11/10/78 SHOWS A DISTANCE FROM CENTER TO THE NE CORNER OF SE 1/4 NW 1/4 AS WELL
AS AN IRON STAKE SET 33' WEST, BUT DOES NOT SAY WHAT WAS FOUND OR SET AT SAID CORNER.
SEARCHED AREA, FOUND CUT "X" IN P.C.C. PAVEMENT. UTILIZED SAID "X" AS CORNER AS IT CORRESPONDS
TO FOUND R.O.W. CORNER TO THE WEST.

PLAN VIEW

(SHOW A MINIMUM OF THREE REFERENCE TIES TO DURABLE PHYSICAL OBJECTS, RELEVANT MONUMENTS AND PHYSICAL
CONDITIONS THAT WILL ENABLE RECOVERY OF THE CORNER.)



HELLAND ENGINEERING & SURVEYING, LTD.
1107 Technology Parkway
Cedar Falls, Iowa 50613-6951
(319)-266-0161

SHINER = 8d. NAIL & 1 5/16"Ø METAL SHINER DRAWN BY: JBL
BRASS TAG = 8d. NAIL & 13/16"Ø BRASS TAG
OPC = PLASTIC CAP (O=ORANGE, R=RED, Y=YELLOW)
(00') RECORDED AS FILE NAME: 17-207-34.DWG



I hereby certify that this land surveying document was prepared
and the related survey work was performed by me or under my
direct personal supervision and that I am a duly licensed
Professional Land Surveyor under the laws of the State of Iowa.

Kyle J. Helland
License Number 23212
My license renewal date is December 31, 2017.
All pages or sheets are covered by this seal except:

LIST CORNERS TO BE INDEXED

CORNER	SECTION	TOWNSHIP	RANGE
NE COR. SE 1/4 NW 1/4	18	89N	12W
SE COR. NE 1/4 NW 1/4	18	89N	12W
SW COR. NW 1/4 NE 1/4	18	89N	12W
NW COR. SW 1/4 NE 1/4	18	89N	12W