

File **2017-00020703**

Reserved for County Recorder's use.

Kyle J. Helland, 1107 Technology Parkway, Cedar Falls, Iowa 50613-6951, (319)-266-0161

UNITED STATES PUBLIC LAND SURVEY CORNER CERTIFICATE OF

LAND SURVEY MONUMENTS SITUATED IN SECTION NO. 17, TOWNSHIP NO. 89 NORTH, RANGE
NO. 12 WEST OF THE FIFTH PRINCIPAL MERIDIAN, BLACK HAWK COUNTY, IOWA.

PREVIOUSLY RECORDED IN 343 MISC. 582

(SHOW REASON FOR PREPARING THIS CERTIFICATE, THE EVIDENCE AND DETAILED PROCEDURES USED IN ESTABLISHING THE CORNER POSITIONS AND MONUMENTATION FOUND OR PLACED.)

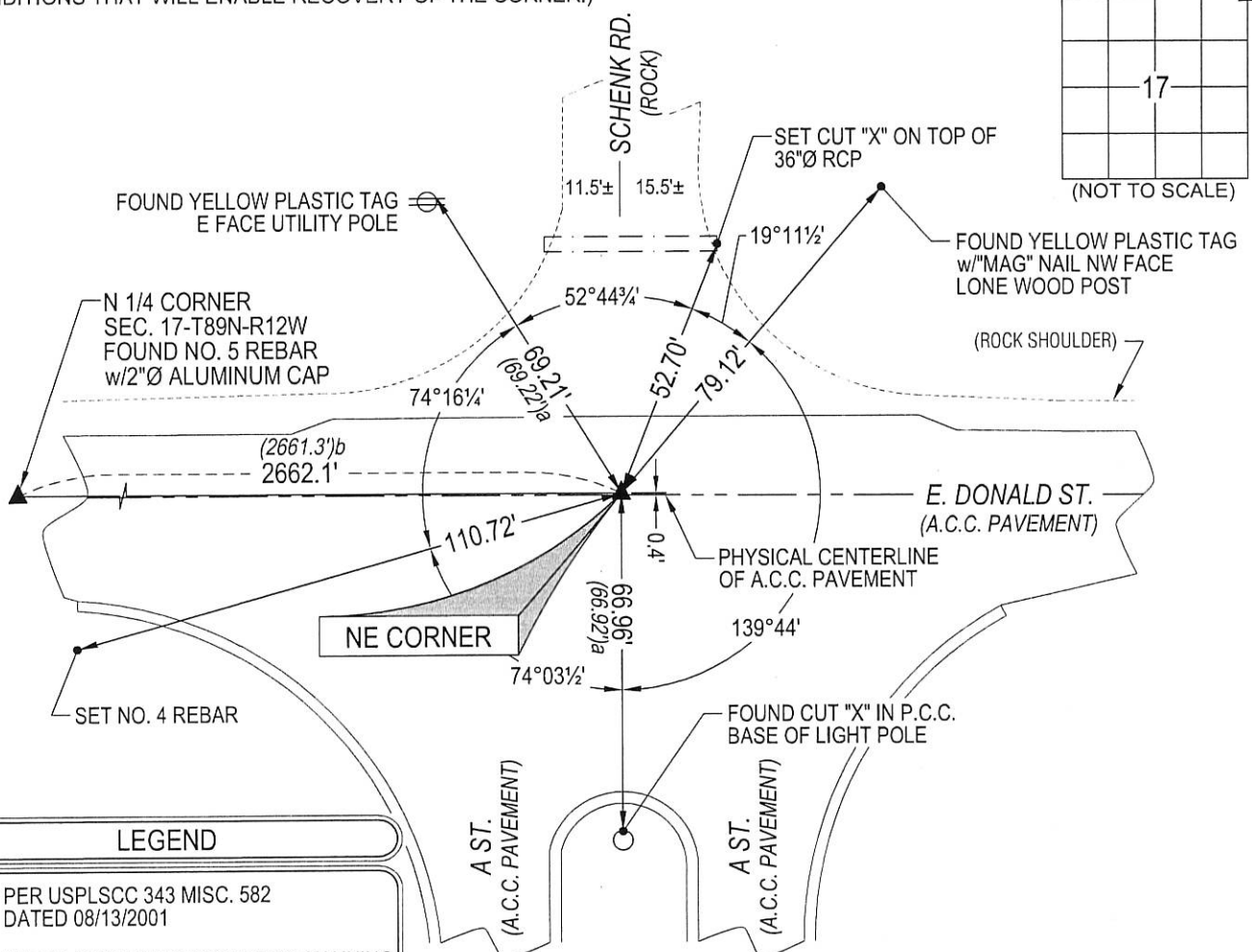
MONUMENT DESCRIPTION AND REMARKS:

ONLY TWO REFERENCE TIES REMAIN. SURVEY COMPLETED IN THE SE 1/4 OF SEC. 8-T89N-R12W.

— **NE CORNER:** USPLSCC 343 MISC. 582 CALLS FOR [REESTABLISHED DUE TO A.C.C. RESURFACING PROJECT. FOUND 3/4" PIN IN P.C.C. PAVEMENT PRIOR TO RESURFACING AND RESET CORNER WITH 6" x 5/8" REBAR w/2" ALUMINUM CAP AFTER A.C.C. RESURFACING]. FOUND NO. 5 REBAR w/2"Ø ALUMINUM CAP STAMPED "BLACK HAWK COUNTY LAND CORNER" AT SURFACE OF A.C.C. PAVEMENT. TWO REMAINING TIES CORRESPOND WITHIN REASON.

PLAN VIEW

(SHOW A MINIMUM OF THREE REFERENCE TIES TO DURABLE PHYSICAL OBJECTS, RELEVANT MONUMENTS AND PHYSICAL CONDITIONS THAT WILL ENABLE RECOVERY OF THE CORNER.)



LEGEND

(0.0')a PER USPLSCC 343 MISC. 582
DATED 08/13/2001

(0.0')b PER BLACK HAWK ENGINEER'S CHAINING
NOTES PAGE 28 DATED 11/26/1941



HELLAND ENGINEERING & SURVEYING, LTD.
1107 Technology Parkway
Cedar Falls, Iowa 50613-6951
(319)-266-0161

I hereby certify that this land surveying document was prepared and the related survey work was performed by me or under my direct personal supervision and that I am a duly licensed Professional Land Surveyor under the laws of the State of Iowa.

Kyle J. Helland
License Number 23212
My license renewal date is December 31, 2017.
All pages or sheets are covered by this seal except:

SHINER = 8d. NAIL & 1 5/16"Ø METAL SHINER DRAWN BY: JBL
BRASS TAG = 8d. NAIL & 13/16"Ø BRASS TAG
OPC = PLASTIC CAP (O=ORANGE, R=RED, Y=YELLOW)
(00') RECORDED AS FILE NAME: 17-146-23.DWG

LIST CORNERS TO BE INDEXED

CORNER	SECTION	TOWNSHIP	RANGE
NE CORNER	17	89N	12W
SE CORNER	8	89N	12W
SW CORNER	9	89N	12W
NW CORNER	16	89N	12W