

MISC  
SC  
INDEX *sf*  
MARGIN  
PROOF *gm*  
COMPARE *pc*

BLACK HAWK COUNTY IOWA, SS: **004295**  
Filed for record AUG 16, 2001 at  
11:00 AM. and recorded in Book 343  
of MISC at Page 580  
*C. J. King* Recorder  
FEE N/C  
BLACK HAWK COUNTY ENGINEER

PREPARED BY: BLACK HAWK COUNTY ENGINEERS OFFICE  
316 E. FIFTH STREET, ROOM 211 WATERLOO, IOWA 50703  
PH.# (319) 833-3008  
FAX# (319) 833-3139  
SLSI 9-94  
CERT 12-96

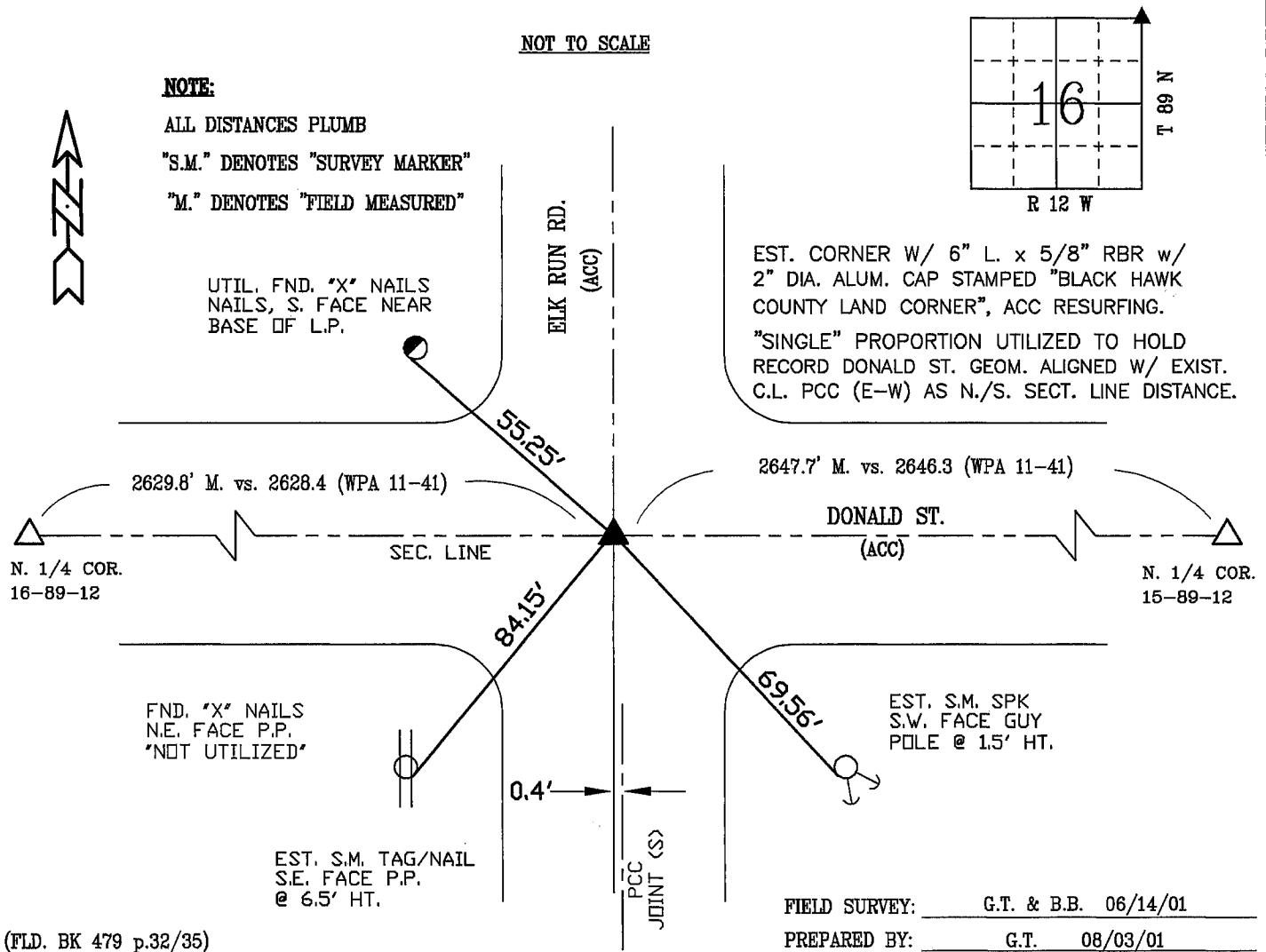
UNITED STATES PUBLIC LAND SURVEY CORNER CERTIFICATE OF  
Land Survey Monuments situated in Section 16, Township 89 N,  
Range 12 W, of the Fifth Principal Meridian, BLACK HAWK County, Iowa.  
Previously recorded in Misc. Book N/A, Page N/A, in County Recorder's Office.

(Show reason for preparing this certificate, the evidence and detailed procedures used in establishing the corner positions and monumentation found or placed.)

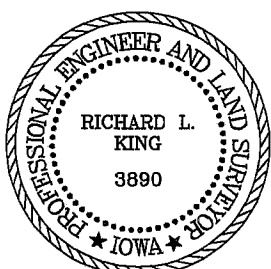
Monument Description and Remarks: RE-EST. DUE TO ACC RESURFACING PROJECT. NO EVIDENCE PRIOR TO RESURFACING, RUBBELIZED PCC PAVEMENT REMOVED, DUG 2.0' DIA. x 4.5' Dp. HOLE, AND FOUND NOTHING. EST. CORNER W/ 42" L. x 5/8" REBAR FLUSH W/ EXIST. PCC SUBBASE. EST. 6" L. x 5/8" RBR. W/ 2" ALUM. CAP AFTER ACC RESURF., WITH CORNER SET BY "SINGLE" PROP. TO HOLD N./S. DIST. ON EXIST. GEOM. OF RECORD ROAD (CL JNT. SPLIT).

### PLAN - VIEW

(Show a minimum of three reference ties to durable physical objects, relevant monuments and physical conditions that will enable recovery of the corner.)



### CERTIFICATION



I hereby certify that this land surveying document was prepared and the related survey work was performed by me or under my direct personal supervision and that I am a duly licensed Land Surveyor under the laws of the State of Iowa.

*Richard L. King* 8/13/01 (date)  
Richard L. King  
License Number 3890  
My license renewal date is December 31, 2001  
Pages or sheets covered by this seal:  
This Land Corner Certificate Only.

### LIST CORNERS TO BE INDEXED

Corner	Section	Township	Range
N.E.	16	89 N	12 W
N.W.	15	89 N	12 W
S.E.	9	89 N	12 W
S.W.	10	89 N	12 W