

Reserved for County Recorder's use.

Doc ID: 010392140001 Type: GEN
Recorded: 02/18/2022 at 01:58:33 PM
Fee Amt: \$7.00 Page 1 of 1
Black Hawk County Iowa
SANDIE L. SMITH RECORDER
File **2022-00016785**

Kyle J. Helland, 6109 Chancellor Drive, Cedar Falls, Iowa 50613-6916, (319)-266-0161

UNITED STATES PUBLIC LAND SURVEY CORNER CERTIFICATE
OF

LAND SURVEY MONUMENTS SITUATED IN SECTION NO. 15, TOWNSHIP NO. 89 NORTH, RANGE
NO. 12 WEST OF THE FIFTH PRINCIPAL MERIDIAN, BLACK HAWK COUNTY, IOWA.
PREVIOUSLY RECORDED IN FILE 2013-00001966.

(SHOW REASON FOR PREPARING THIS CERTIFICATE, THE EVIDENCE AND DETAILED PROCEDURES USED IN ESTABLISHING THE
CORNER POSITIONS AND MONUMENTATION FOUND OR PLACED.)

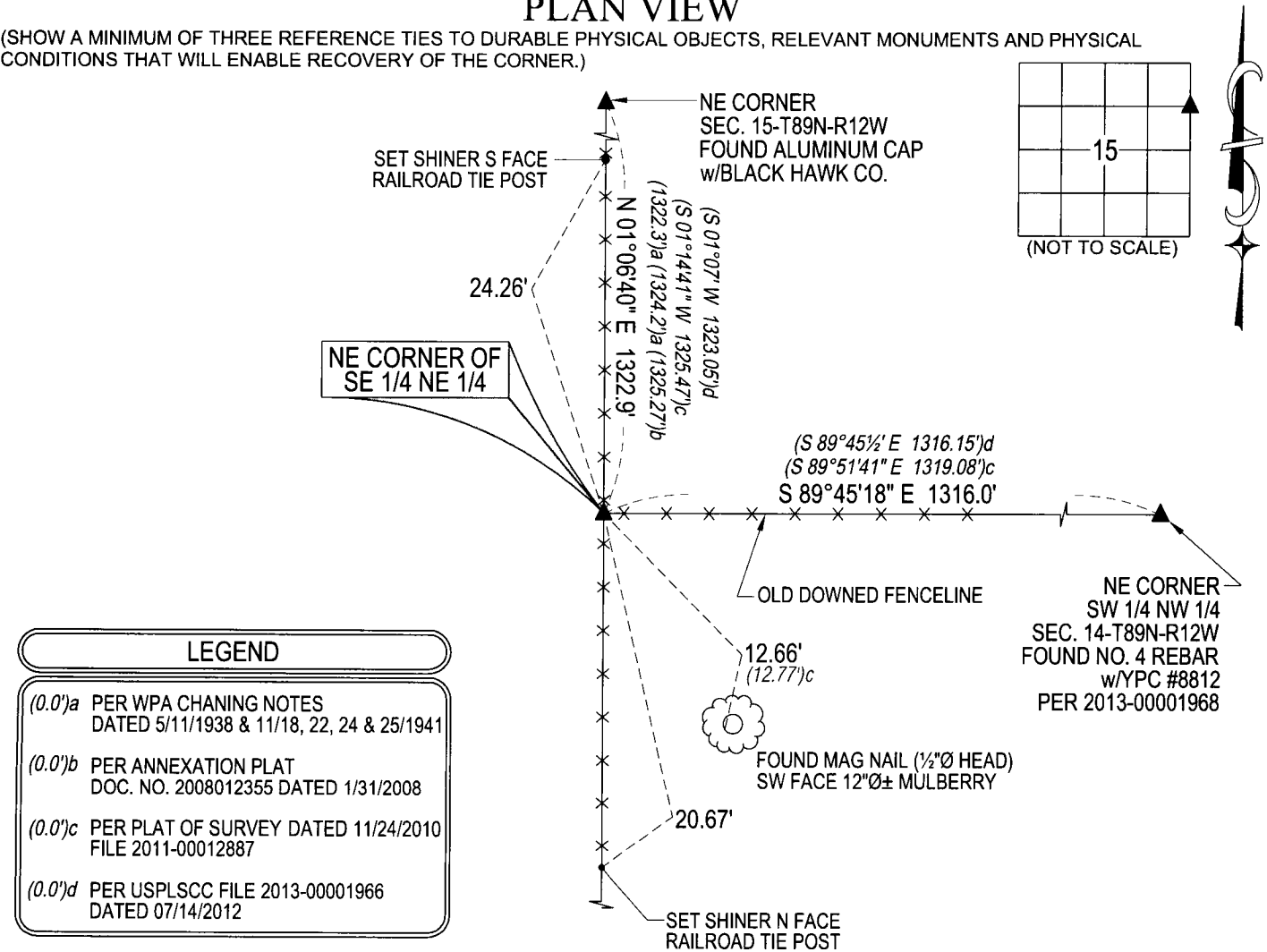
MONUMENT DESCRIPTION AND REMARKS:

ONLY ONE REFERENCE TIE REMAINS. SURVEY COMPLETED IN THE SW 1/4 NW 1/4 OF SEC. 14-T89N-R12W.

→ **NE CORNER OF SE 1/4 NE 1/4:** USPLSCC FILE 2013-00001966 DATED 07/14/2012 CALLS FOR [SET NO. 4 REBAR w/OPC #6505 AT INTERSECTION OF FENCELINE RUNNING NORTH-SOUTH AND OLD DOWNED FENCELINE RUNNING EAST.]. SEARCHED AREA AND FOUND NO. 4 REBAR w/OPC #6505 0.1' ABOVE GRADE. DISTANCE TO LONE REMAINING TIE CORRESPONDS WITHIN REASON TO RECORDED DISTANCE. THEREFORE UTILIZED SAID FOUND NO. 4 REBAR w/OPC #6505 AS CORNER.

PLAN VIEW

(SHOW A MINIMUM OF THREE REFERENCE TIES TO DURABLE PHYSICAL OBJECTS, RELEVANT MONUMENTS AND PHYSICAL
CONDITIONS THAT WILL ENABLE RECOVERY OF THE CORNER.)



(BEARINGS ARE ASSUMED)



HELLAND ENGINEERING & SURVEYING, LTD.
6109 Chancellor Drive
Cedar Falls, Iowa 50613-6916
(319)-266-0161

BRASS TAG = 4d. NAIL & 13/16"Ø BRASS TAG DRAWN BY: KDA
SHINER = 1"Ø STEEL SHINER w/MASONRY NAIL
OPC = PLASTIC CAP (O=ORANGE, R=RED, Y=YELLOW)
(00') RECORDED AS FILE NAME: 21-260-64.DWG



I hereby certify that this land surveying document was prepared
and the related survey work was performed by me or under my
direct personal supervision and that I am a duly licensed
Professional Land Surveyor under the laws of the State of Iowa.
Kyle J. Helland
License Number 23212
My license renewal date is December 31, 2021.
All pages or sheets are covered by this seal except:

LIST CORNERS TO BE INDEXED			
CORNER	SECTION	TOWNSHIP	RANGE
NE COR. SE 1/4 NE 1/4	15	89N	12W
SE COR. NE 1/4 NE 1/4	15	89N	12W
SW COR. NW 1/4 NW 1/4	14	89N	12W
NW COR. SW 1/4 NW 1/4	14	89N	12W