

* Paul H. Helland, 1107 Technology Parkway, Cedar Falls, Iowa 50613-6951, (319)-266-0161

UNITED STATES PUBLIC LAND SURVEY CORNER CERTIFICATE
OF

LAND SURVEY MONUMENTS SITUATED IN SECTION NO. 15, TOWNSHIP NO. 89 NORTH, RANGE
NO. 12 WEST OF THE FIFTH PRINCIPAL MERIDIAN, BLACK HAWK COUNTY, IOWA.
PREVIOUSLY RECORDED IN N/A

(SHOW REASON FOR PREPARING THIS CERTIFICATE, THE EVIDENCE AND DETAILED PROCEDURES USED IN ESTABLISHING THE
CORNER POSITIONS AND MONUMENTATION FOUND OR PLACED.)

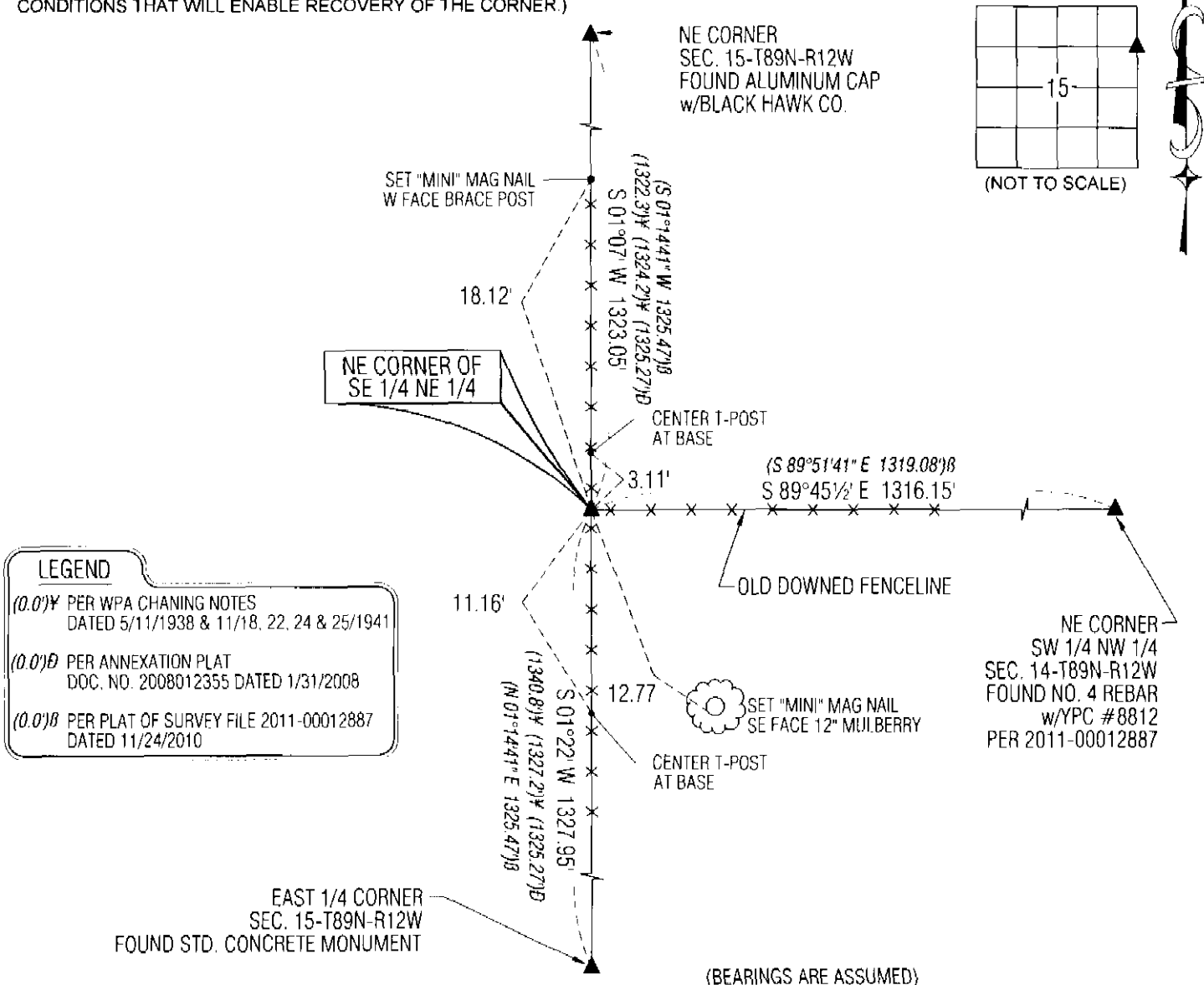
MONUMENT DESCRIPTION AND REMARKS:

NO USPLSCC ON FILE. SURVEY COMPLETED IN THE SE 1/4 OF SEC. 15-T89N-R12W & IN THE NW 1/4 OF SEC.
14-T89N-R12W.

→ **NE CORNER SE 1/4 NE 1/4:** NO BLACK HAWK COUNTY ENGINEER TIES AVAILABLE. PLAT OF SURVEY FILE 2011-00012887
DATED 11/24/2010 CALLS FOR [CORNER TO BE AT MIDPOINT BETWEEN NE CORNER AND E 1/4 OF SECTION BUT SHOWS
NOTHING FOUND OR SET]. SET NO. 4 REBAR w/OPC #6505 AT INTERSECTION OF FENCELINE RUNNING NORTH-SOUTH AND
OLD DOWNED FENCELINE RUNNING EAST.

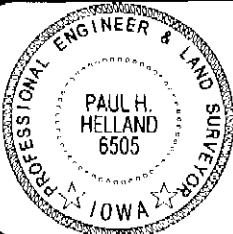
PLAN VIEW

(SHOW A MINIMUM OF THREE REFERENCE TIES TO DURABLE PHYSICAL OBJECTS, RELEVANT MONUMENTS AND PHYSICAL
CONDITIONS THAT WILL ENABLE RECOVERY OF THE CORNER.)



HES - HELLAND ENGINEERING & SURVEYING, LTD.
1107 Technology Parkway
Cedar Falls, Iowa 50613-6951
(319)-266-0161

SHINER = 8D NAIL & 1 5/16"Ø METAL SHINER
BRASS TAG = 8D NAIL & 13/16"Ø BRASS TAG
OPC = PLASTIC CAP (O=ORANGE, R=RED, Y=YELLOW)
(00') RECORDED AS FILE NAME: 12-172C4.DWG



I hereby certify that this land surveying document was prepared
and the related survey work was performed by me or under my
direct personal supervision and that I am a duly licensed Land
Surveyor under the laws of the State of Iowa.

Paul H. Helland
License Number 6505
My license renewal date is December 31, 2013.
All pages or sheets are covered by this seal except:

| LIST CORNERS TO BE INDEXED | | | |
|----------------------------|---------|----------|-------|
| CORNER | SECTION | TOWNSHIP | RANGE |
| NE COR. SE 1/4 NE 1/4 | 15 | 89N | 12W |
| SE COR. NE 1/4 NE 1/4 | 15 | 89N | 12W |
| SW COR. NW 1/4 NW 1/4 | 14 | 89N | 12W |
| NW COR. SW 1/4 NW 1/4 | 14 | 89N | 12W |

File Number: 2013-00001966 Seq: 1