



Doc ID: 004864220001 Type: GEN
Kind: CORNER
Recorded: 07/27/2012 at 03:32:01 PM
Fee Amt: \$7.00 Page 1 of 1
Black Hawk County Iowa
JUDITH A MCCARTHY RECORDER

File 2013-00001967

*
Paul H. Helland, 1107 Technology Parkway, Cedar Falls, Iowa 50613-6951, (319)-266-0161

UNITED STATES PUBLIC LAND SURVEY CORNER CERTIFICATE
OF

LAND SURVEY MONUMENTS SITUATED IN SECTION NO. 15, TOWNSHIP NO. 89 NORTH, RANGE
NO. 12 WEST OF THE FIFTH PRINCIPAL MERIDIAN, BLACK HAWK COUNTY, IOWA.
PREVIOUSLY RECORDED IN DOC. NO. 2007019470

(SHOW REASON FOR PREPARING THIS CERTIFICATE, THE EVIDENCE AND DETAILED PROCEDURES USED IN ESTABLISHING THE
CORNER POSITIONS AND MONUMENTATION FOUND OR PLACED.)

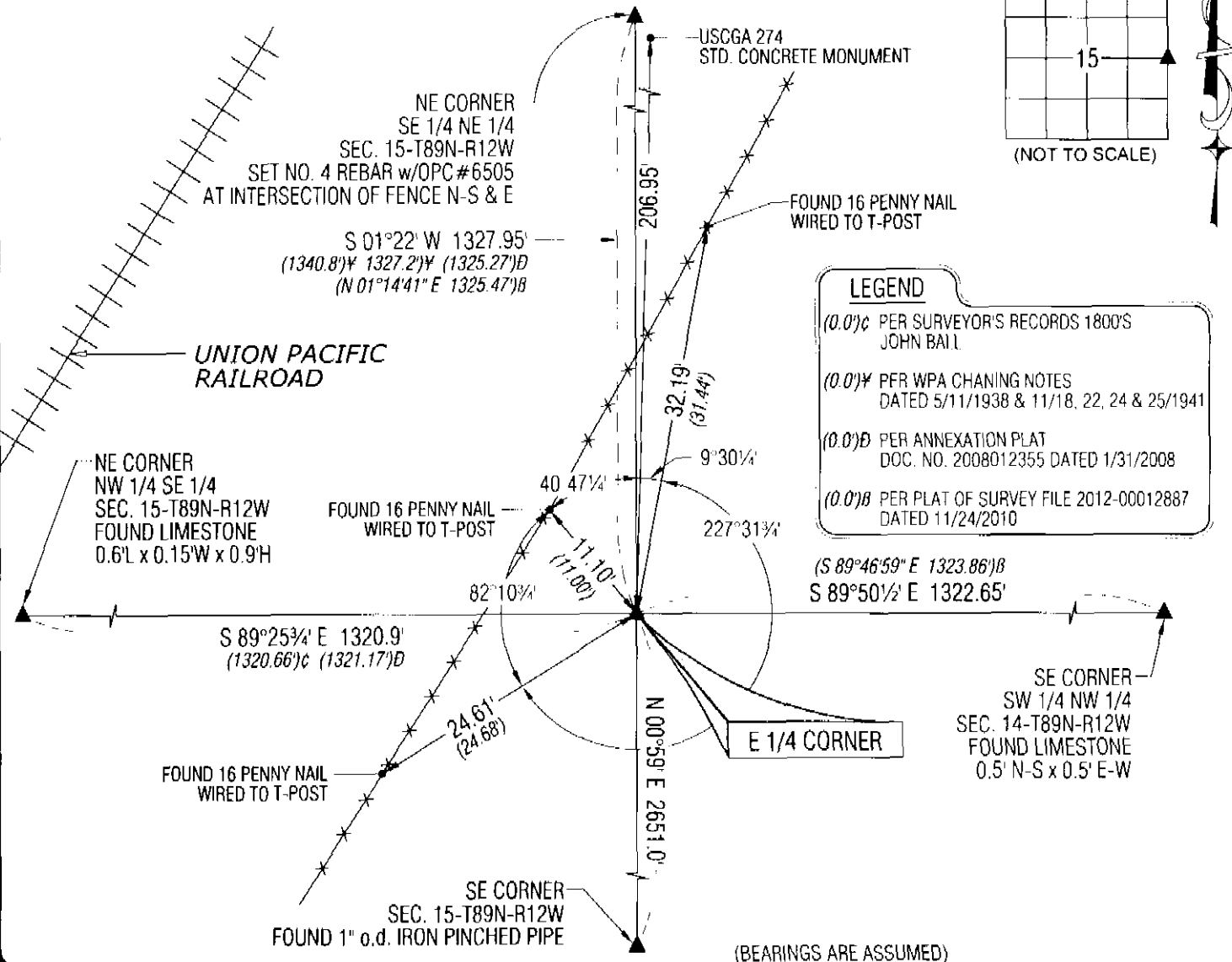
MONUMENT DESCRIPTION AND REMARKS:

MONUMENT HAS CHANGED. SURVEY COMPLETED IN THE SE 1/4 OF SEC. 15-T89N-R12W & IN THE NW 1/4 OF SEC.
14-T89N-R12W.

→ **E 1/4 CORNER:** USPLSCC DATED 3/17/2007 CALLS FOR [FOUND S.C.M. 2.0' DEEP WITH REBAR NEXT TO IT. REFERENCED
AND SET 1/2" x 24" REBAR/YELLOW PLASTIC CAP NO.8505 ABOVE S.C.M.]. FOUND NO. 4 REBAR BENT ABOVE STANDARD
CONCRETE MONUMENT, FOUND STANDARD CONCRETE MONUMENT 0.9' DEEP. UTILIZED SAID CONCRETE MONUMENT AS
CORNER.

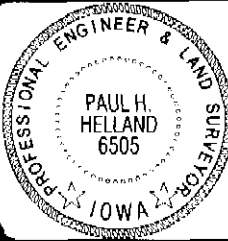
PLAN VIEW

(SHOW A MINIMUM OF THREE REFERENCE TIES TO DURABLE PHYSICAL OBJECTS, RELEVANT MONUMENTS AND PHYSICAL
CONDITIONS THAT WILL ENABLE RECOVERY OF THE CORNER.)



HELLAND ENGINEERING & SURVEYING, LTD.
1107 Technology Parkway
Cedar Falls, Iowa 50613-6951
(319)-266-0161

SHINER — 8D NAIL & 1 5/16" Ø METAL SHINER
BRASS TAG — 8D NAIL & 13/16" Ø BRASS TAG
OPC — PLASTIC CAP (O=ORANGE, R=RED, Y=YELLOW)
(00') RECORDED AS FILE NAME: 12-174C5.DWG



I hereby certify that this land surveying document was prepared
and the related survey work was performed by me or under my
direct personal supervision and that I am a duly licensed Land
Surveyor under the laws of the State of Iowa.
Paul H. Helland
License Number 6505
My license renewal date is December 31, 2013.
All pages or sheets are covered by this seal except:

LIST CORNERS TO BE INDEXED			
CORNER	SECTION	TOWNSHIP	RANGE
EAST 1/4 CORNER	15	89N	12W
WEST 1/4 CORNER	14	89N	12W

File Number: 2013-00001967 Seq: 1