

EARTH TECH

INS

P

Z

Document Number: 2007019470

Date: Mar 19, 2007 4:30:00 pm

Aud Fee: 0.00 Rec Fee: 5.00

Trans Tax: 0.00 Rec Management Fee: 1.00

E-Com Fee: 1.00 Non-Standard Page Fee: 0.00

Filed for record in Black Hawk County, Iowa
Judith A. McCarthy, County Recorder

Recorded By: Michael R. Fagle, P.L.S.

Earth Tech, 501 Sycamore St., Suite 222, Waterloo, Iowa 50703

I-319-232-6531

UNITED STATES PUBLIC LAND SURVEY CORNER CERTIFICATE OF

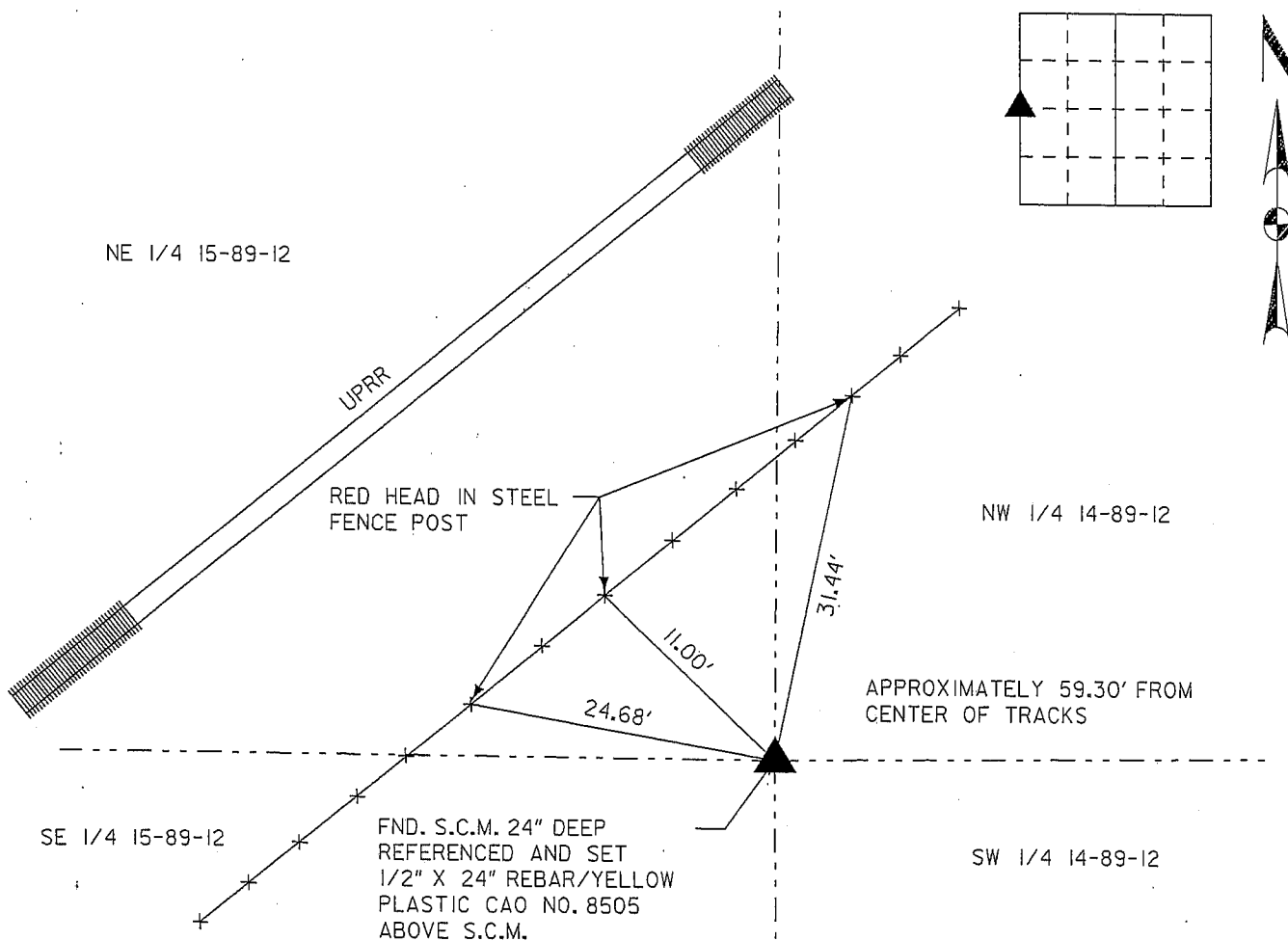
Land Survey Monuments situated in Section 14, Township 89 North,
Range 12 West, of the Fifth Principal Meridian, Black Hawk
County, Iowa. Previously recorded in * See Description Below
in County Engineer's Office. (Book, Page, Document Number, etc.)

(Show reason for preparing this certificate, the evidence and detailed procedures used in establishing the corner positions and monumentation found or placed.)

Monument Description and Remarks: The Section Corner was located by using the chaining notes that are filed in the Black Hawk County Engineer's Office (No previous ties). Found S.C.M. 2.0' deep with rebar next to it. Referenced and set 1/2" x 24" rebar/yellow plastic cap no. 8505 above S.C.M.

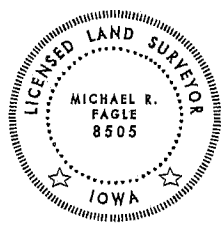
PLAN - VIEW

(Show a minimum of three reference ties to durable physical objects, relevant monuments and physical conditions that will enable recovery of the corner.)



List Corners to be Indexed

Corners	Section	Twp	Range
West Quarter Corner	14	T 89 N	R 12 W



I hereby certify that this Land Surveying document was prepared by me or under my direct personal supervision and that I am a duly Licensed Land Surveyor under the laws of the State of Iowa.

Michael R. Fagle 3-17-07
MICHAEL R. FAGLE Date

License number 8505

My license renewal date is December 31, 2008

Pages or sheets covered by this seal:

THIS SHEET