

EARTH TECH

INS

P

Z

Document Number: 2007019471  
Date: Mar 19, 2007 4:30:00 pm  
Aud Fee: 0.00 Rec Fee: 5.00  
Trans Tax: 0.00 Rec Management Fee: 1.00  
E-Com Fee: 1.00 Non-Standard Page Fee: 0.00  
Filed for record in Black Hawk County, Iowa  
Judith A. McCarthy, County Recorder

Recorded By: Michael R. Fagle, P.L.S. Earth Tech, 501 Sycamore St., Suite 222, Waterloo, Iowa 50703 I-319-232-6531

UNITED STATES PUBLIC LAND SURVEY CORNER CERTIFICATE  
OF

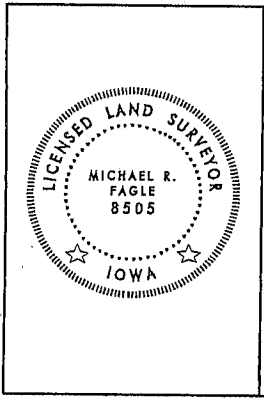
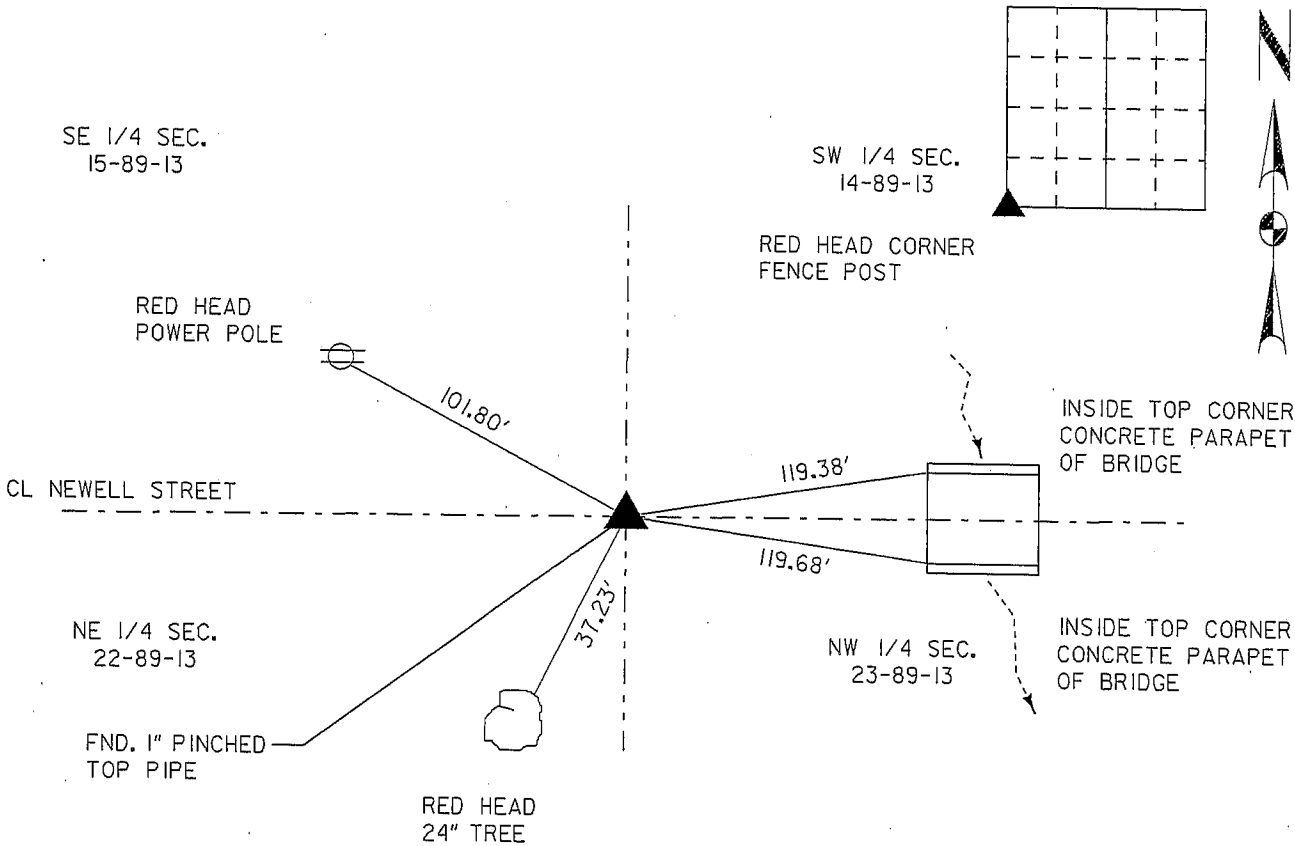
Land Survey Monuments situated in Section 14, Township 89 North, Range 12 West, of the Fifth Principal Meridian, Black Hawk County, Iowa. Previously recorded in \* See Description Below In County Engineer's Office.  
(Book, Page, Document Number, etc.)

(Show reason for preparing this certificate, the evidence and detailed procedures used in establishing the corner positions and monumentation found or placed.)

Monument Description and Remarks: Found 1" Pinched Top Pipe 6" deep. (no previous ties).

PLAN - VIEW

(Show a minimum of three reference ties to durable physical objects, relevant monuments and physical conditions that will enable recovery of the corner.)



I hereby certify that this Land Surveying document was prepared by me or under my direct personal supervision and that I am a duly Licensed Land Surveyor under the laws of the State of Iowa.  
*Michael R. Fagle* 3-17-07  
MICHAEL R. FAGLE Date  
License number 8505  
My license renewal date is December 31, 2008  
Pages or sheets covered by this seal:  
THIS SHEET

List Corners to be Indexed			
Corners	Section	Twp	Range
Southwest Corner	14	T 89 N	R 12 W