

Reserved for County Recorder's Use.

Kyle J. Helland, 6109 Chancellor Drive, Cedar Falls, Iowa 50613-6916, (319)-266-0161

UNITED STATES PUBLIC LAND SURVEY CORNER CERTIFICATE OF

LAND SURVEY MONUMENTS SITUATED IN SECTION NO. 14, TOWNSHIP NO. 89 NORTH, RANGE
NO. 12 WEST OF THE FIFTH PRINCIPAL MERIDIAN, BLACK HAWK COUNTY, IOWA.
PREVIOUSLY RECORDED IN FILE 2013-00001968.

(SHOW REASON FOR PREPARING THIS CERTIFICATE, THE EVIDENCE AND DETAILED PROCEDURES USED IN ESTABLISHING THE
CORNER POSITIONS AND MONUMENTATION FOUND OR PLACED.)

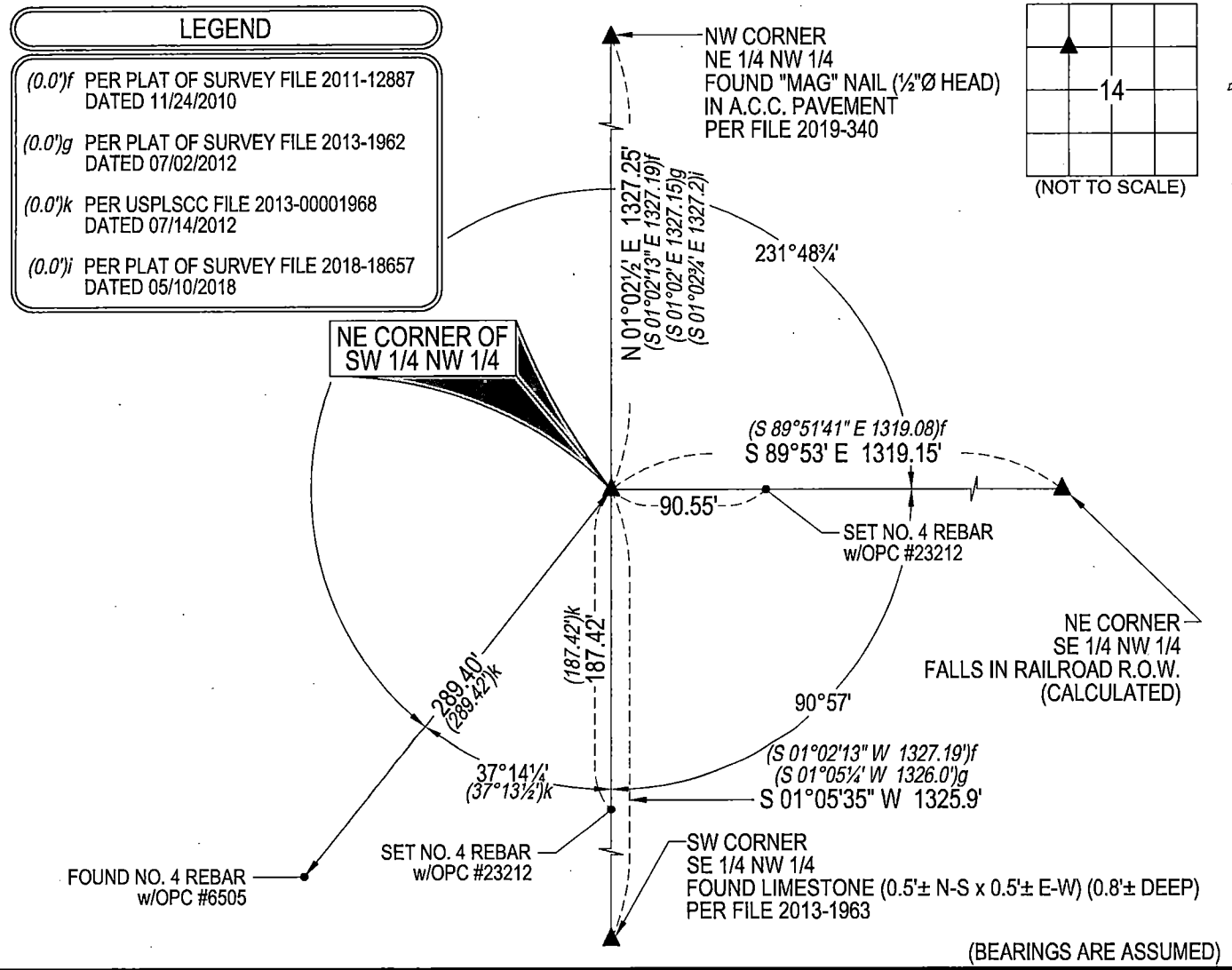
MONUMENT DESCRIPTION AND REMARKS:

ONLY TWO REFERENCE TIES REMAIN. SURVEY COMPLETED IN THE SE 1/4 NW 1/4 OF SEC. 14-T89N-R12W.

→ **NE CORNER SW 1/4 NW 1/4:** NO BLACK HAWK COUNTY ENGINEER TIES AVAILABLE. PLAT OF SURVEY FILE
2011-00012887 DATED 11/24/2010 CALLS FOR [SET 1/2"Ø REBAR & CAP #8812]. USPLSCC FILE 2013-00001968 DATED
07/14/2012 CALLS FOR [FOUND NO. 4 REBAR w/YPC #8812]. PLAT OF SURVEY FILE 2018-00018657 DATED 05/10/2018
CALLS FOR [FOUND NO. 4 REBAR w/YPC]. SEARCHED AREA WITH MAGNETIC DETECTOR AND FOUND NO. 4 REBAR
w/YPC #8812 0.2'± ABOVE GRADE.

PLAN VIEW

(SHOW A MINIMUM OF THREE REFERENCE TIES TO DURABLE PHYSICAL OBJECTS, RELEVANT MONUMENTS AND PHYSICAL
CONDITIONS THAT WILL ENABLE RECOVERY OF THE CORNER.)





HELLAND ENGINEERING & SURVEYING, LTD.
6109 Chancellor Drive
Cedar Falls, Iowa 50613-6916
(319)-266-0161

BRASS TAG = 4d. NAIL & 13/16"Ø BRASS TAG DRAWN BY: KDA
SHINER = 1"Ø STEEL SHINER w/MASONRY NAIL
OPC = PLASTIC CAP (O=ORANGE, R=RED, Y=YELLOW)
(00') RECORDED AS FILE NAME: 21-157-65.DWG



I hereby certify that this land surveying document was prepared
and the related survey work was performed by me or under my
direct personal supervision and that I am a duly licensed
Professional Land Surveyor under the laws of the State of Iowa.

Kyle J. Helland 06/11/2021
Kyle J. Helland
License Number 23212
My license renewal date is December 31, 2021.
All pages or sheets are covered by this seal except:

LIST CORNERS TO BE INDEXED			
CORNER	SECTION	TOWNSHIP	RANGE
NE COR. SW 1/4 NW 1/4	14	89N	12W
SE COR. NW 1/4 NW 1/4	14	89N	12W
SW COR. NE 1/4 NW 1/4	14	89N	12W
NW COR. SE 1/4 NW 1/4	14	89N	12W